



88 Beccles Drive, Barking, IG11 9HY

Price Guide £625,000

- Four spacious bedrooms over three floors
- Loft and rear extensions
- First-floor family bathroom
- Beautiful rear garden
- Guide Price £625,000 - £650,000
- Located in the prestigious Leftley Estate
- Two reception rooms
- Additional shower room accessible to all floors
- Off-street parking

88 Beccles Drive, Barking IG11 9HY

Maybury Estates are delighted to offer for sale this 4-Bedroom Extended Terraced House – Beccles Drive, Barking, IG11 9HY

Situated in the highly sought-after Leftley Estate, this spacious and well-presented four-bedroom terraced home offers excellent family living across three floors.

The property features four generously sized bedrooms, with three located on the first floor alongside a modern family bathroom. The second floor boasts a large principal bedroom and a shower room, which is accessible to all floors, adding extra convenience for a busy household.

On the ground floor, the home offers two bright and spacious reception rooms, ideal for both relaxing and entertaining, along with an extended kitchen that enhances the overall living space. To the rear, a beautifully maintained garden provides a perfect outdoor retreat.

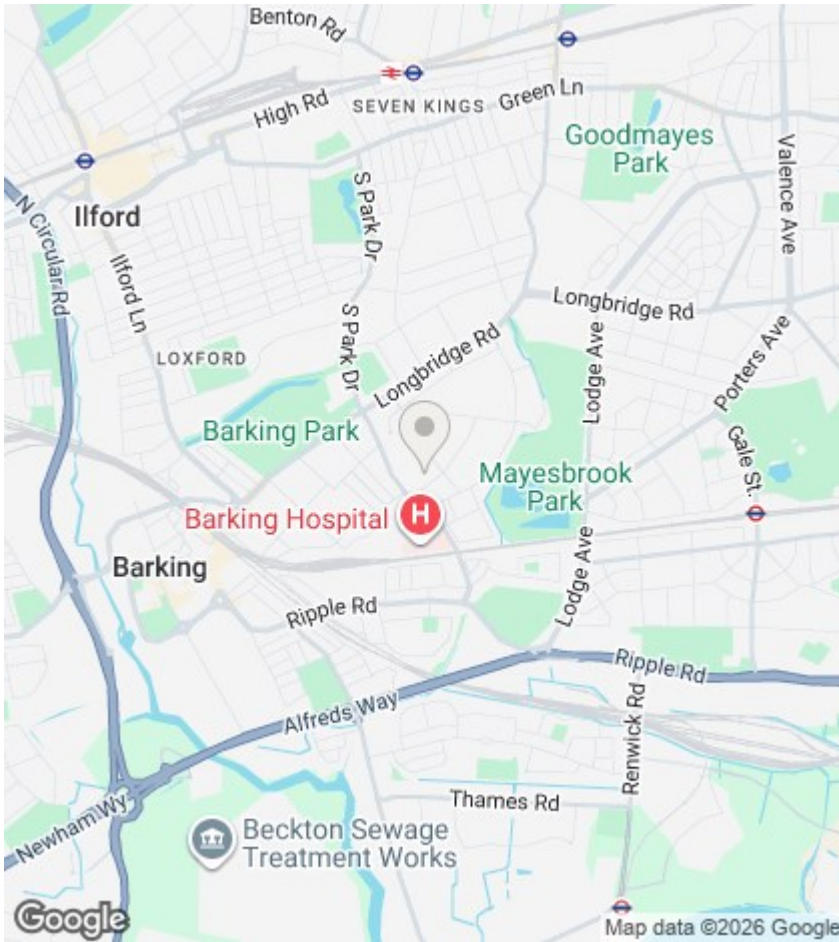
This property has been thoughtfully extended to both the loft and rear, maximising space and functionality. Additional benefits include off-street parking and a convenient location within easy reach of local schools, amenities, and excellent transport links.



Council Tax Band: D







Directions

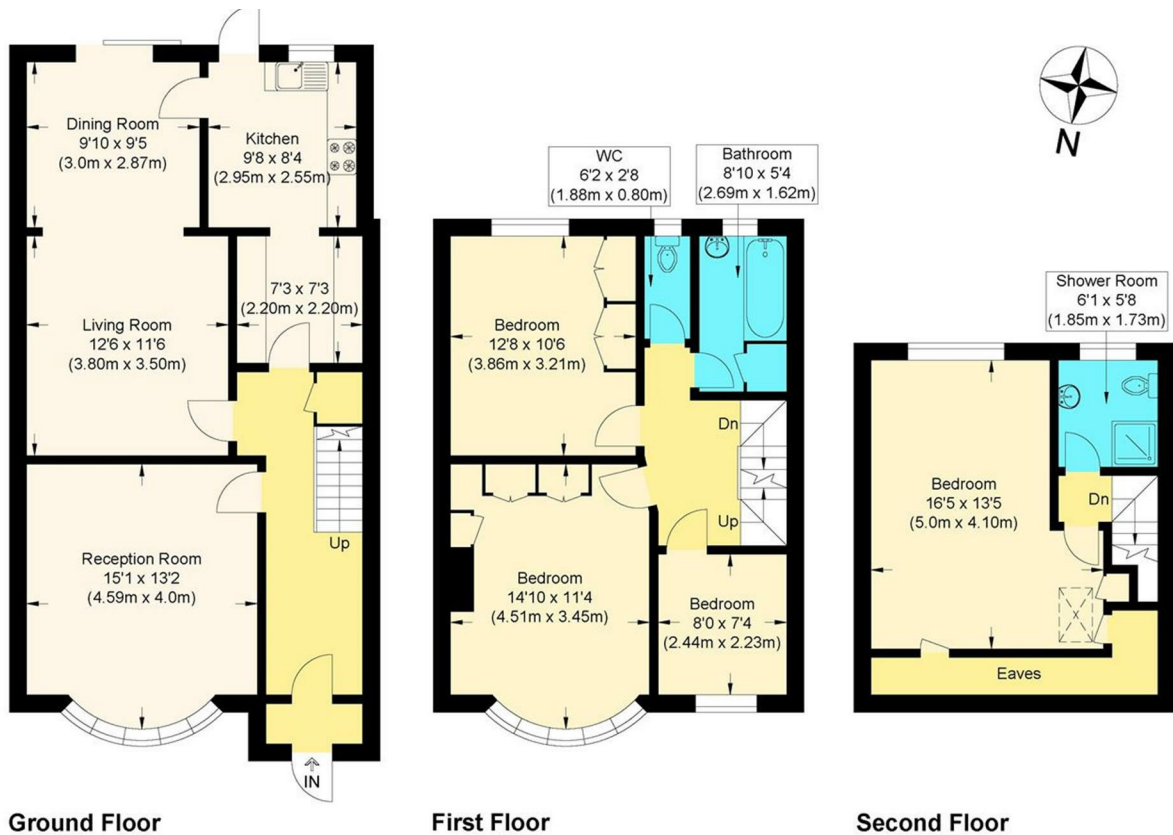
Viewings

Viewings by arrangement only. Call 0207 018 0660 to make an appointment.

EPC Rating:

D

Energy Efficiency Rating		Current	Potential
Very energy efficient - lower running costs			
(92 plus)	A		
(81-91)	B		
(69-80)	C		
(55-68)	D	68	
(39-54)	E		
(21-38)	F		
(1-20)	G		
Not energy efficient - higher running costs			
England & Wales		EU Directive 2002/91/EC	



Beccles Drive, Barking, IG11

Approximate Gross Internal Floor Area : 142.40 sq m / 1532.78 sq ft