



8 Admiralty Avenue, London, E16 2PZ

£2,750 Per month



8 Admiralty Avenue, London, E16 2PZ

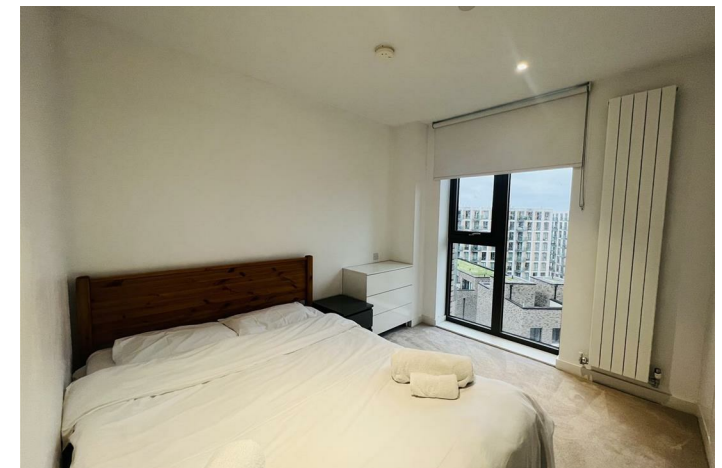
£2,750 Per month

Barrain London are delighted to present this two bedroom Apartment in this sought after development. Royal Wharf is well located for the water sports, bars, and restaurants of Royal Victoria Docks This large apartment has an open plan reception room, two bathrooms, wooden flooring and a private balcony. Gym facilities & swimming pool.

Royal Wharf is conveniently located between Pontoon Dock and Custom House DLR stations with speedy access to Canary Wharf in 12 minutes and London City Airport in 4 minutes. The development benefits from landscaped communal gardens and 24-hour concierge and security service. Also the Royal Wharf Thames Clipper stop is now fully operational.

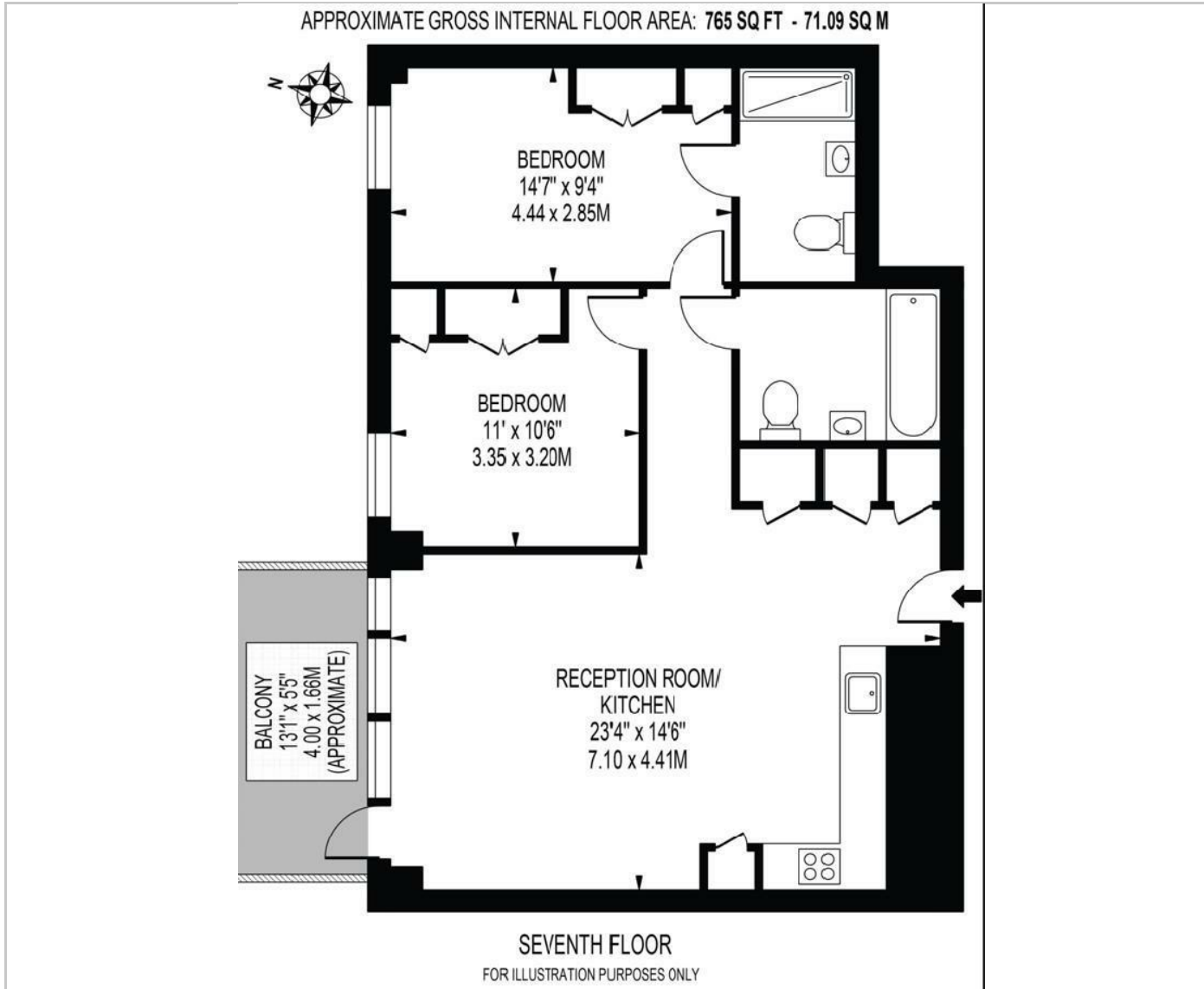
Key Features

- Two Bedrooms, Two Bathrooms with River Views
- Seventh Floor
- Pool / Gym
- Security and 24hr Concierge an
- Private Cinema
- Private Balconyd
- Close to DLR
- Amenities and shops on site
- Royal Wharf

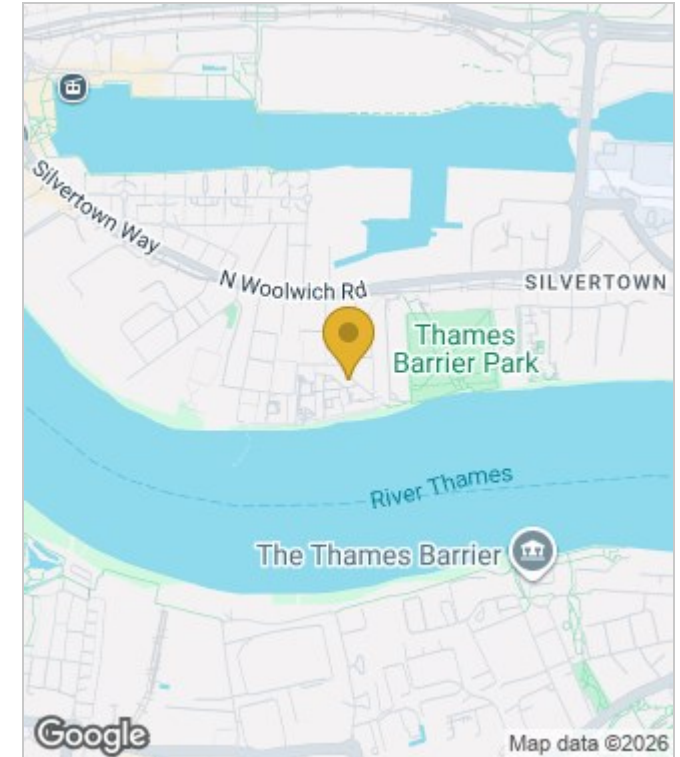


Council Tax Band: E

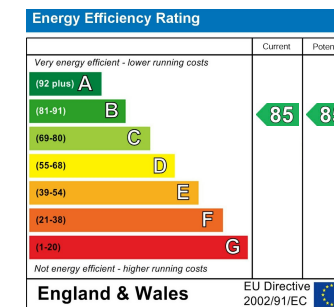
Floor Plans



Area Map



Energy Performance Graph



These particulars, whilst believed to be accurate are set out as a general outline only for guidance and do not constitute any part of an offer or contract. Intending purchasers should not rely on them as statements of representation of fact, but must satisfy themselves by inspection or otherwise as to their accuracy. No person in this firm's employment has the authority to make or give any representation or warranty in respect of the property.