

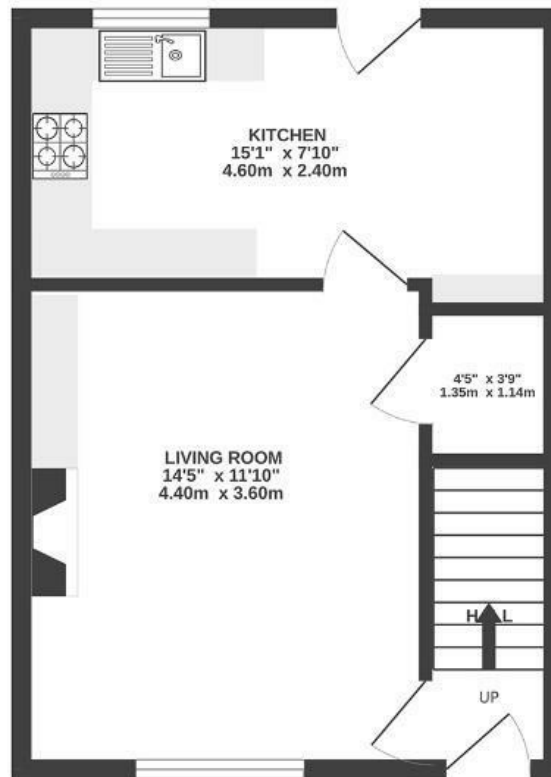


Martock Road BEDMINSTER

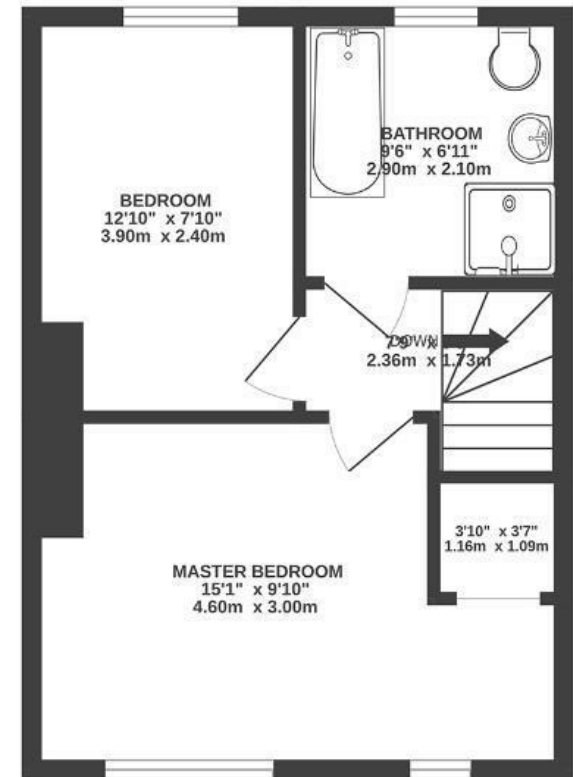
APPROXIMATE FLOOR AREA
63 SQM / 674 SQFT



GROUND FLOOR



FIRST FLOOR



Boardwalk

Martock Road , BRISTOL



£375,000



2 Bedrooms



BS3 5QL



1 Bathrooms

"This has been the perfect first home. We have loved cooking in our lovely new kitchen, enjoying coffee looking out on our lush garden. We can potter down to North Street within 15 minutes and enjoy a Pizza Rova or a pint at the Tobacco Factory. Walking distance to Victoria Park and the Harbour side means we are never far from great views and the buzz of Bristol life. If we want to go further afield, Parson Street station is just down the road to head into town, Temple Meads or North Bristol."

