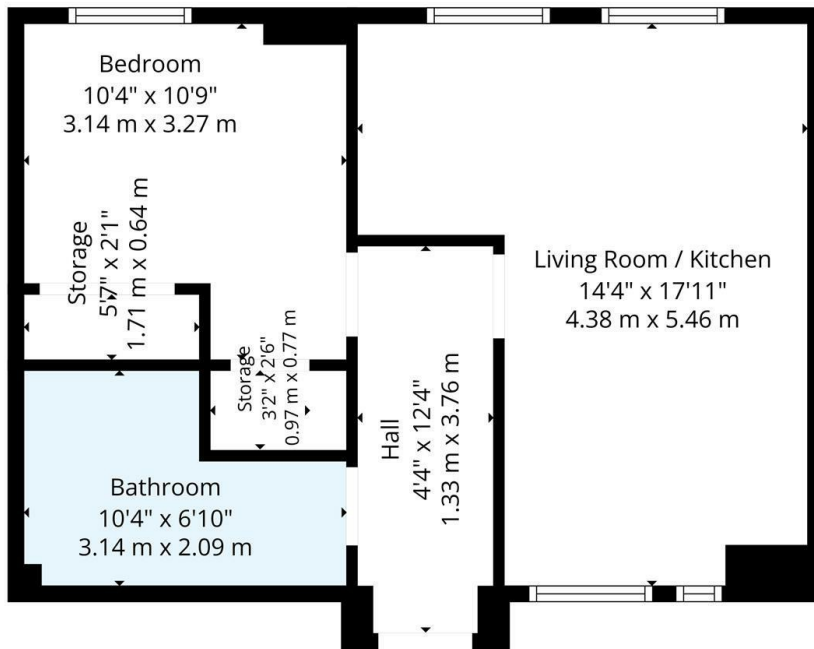


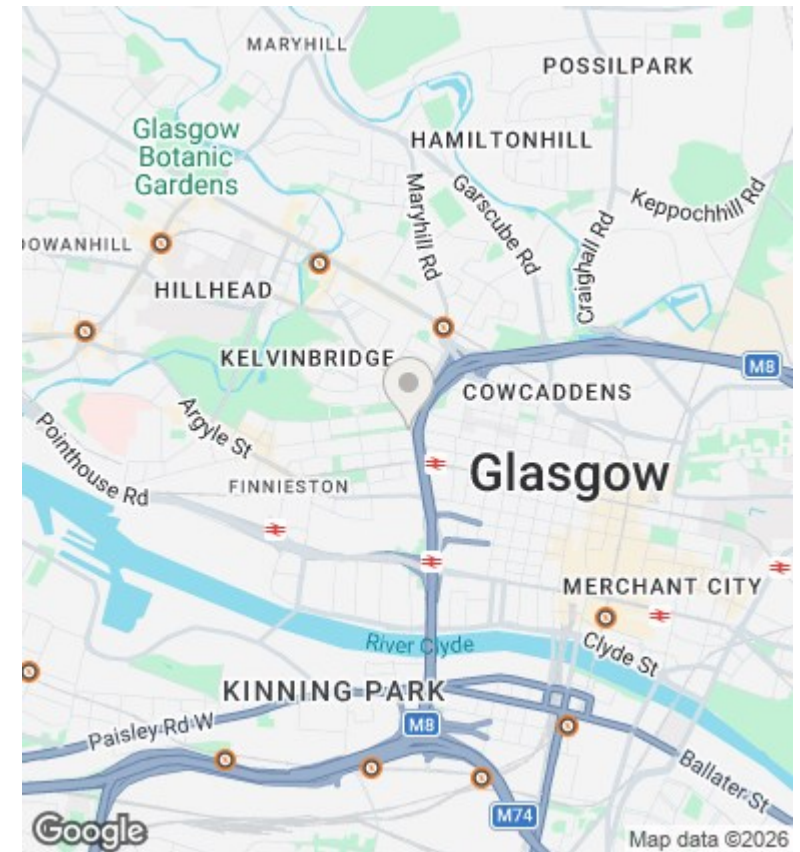
Flat 3/7,, 460 Baird Hall, Sauchiehall Street, Glasgow, Glasgow City,

Offers Over £130,000

- Iconic Art Deco style building
- Security Entry
- Open plan kitchen/Living room
- EER Band C
- Open top atrium and central courtyard
- Town centre location
- Bathroom with three-piece suite
- Elevator to upper levels
- One double sized bedroom
- John Kennedy delivered a speech in the building circa 1939



TOTAL: 432 sq. ft, 40 m²
 1st floor: 432 sq. ft, 40 m²
 EXCLUDED AREAS: STORAGE: 23 sq. ft, 2 m², WALLS: 45 sq. ft, 4 m²
Floor Plan Created By Cubicase App. Measurements Deemed Highly Reliable But Not Guaranteed.



Directions

Viewings

Viewings by arrangement only. Call 01417262111 to make an appointment.

Council Tax Band

EPC Rating:

C

Energy Efficiency Rating		Current	Potential
<i>Very energy efficient - lower running costs</i>			
(92 plus) A			
(81-91) B			
(69-80) C		70	71
(55-68) D			
(39-54) E			
(21-38) F			
(1-20) G			
<i>Not energy efficient - higher running costs</i>			
Scotland	EU Directive 2002/91/EC		