



Carlisle Close, KT2

£299,950

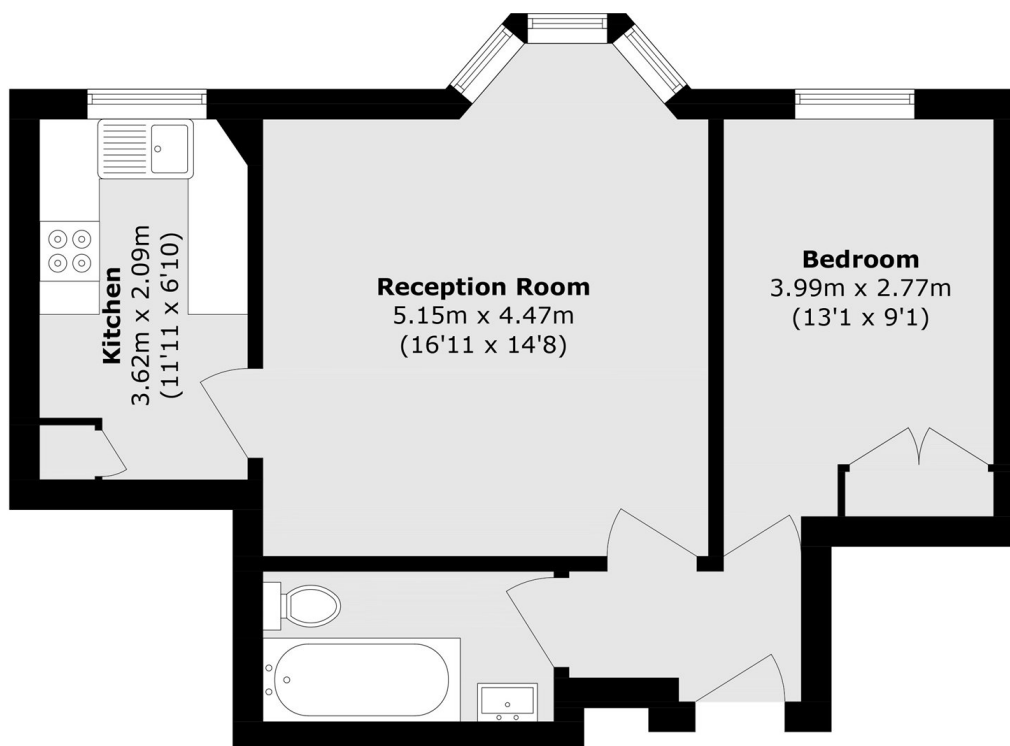
A beautiful one double bedroom apartment tucked away in a quiet cul-de-sac, ideally positioned within walking distance of Norbiton Train Station. The flat benefits from a smart modern kitchen, bright and spacious lounge, allocated garage and share of freehold. Offered with no onward chain this is a perfect first purchase or buy to let investment.

Stewards Court is located on Carlisle Close at the foot of Kingston Hill, less than a mile to the heart of Kingston Town Centre and and just 250 yards to Norbiton Station.

Features

- One Double Bedroom
- Private Garage
- Large Reception Room
- Close To Station
- No Onward Chain
- Share Of Freehold

Carlisle Close, Kingston Upon Thames, KT2



Total area (approx.): 48.8 sq. m (525.2 sq. ft)