



## Rushett Close

Thames Ditton, KT7 0UR

Guide Price £645,000

Situated in a highly desirable area of Thames Ditton, this charming three bedroom end-of-terrace cottage offers excellent potential and is ideally located within walking distance of local amenities and within the catchment area of outstanding schools. The property benefits from off-street parking, front and rear gardens. Internally, the accommodation comprises an entrance porch leading to a welcoming sitting room, separate dining room and kitchen which leads out to the garden. There is also a ground-floor bedroom, providing flexible living options with a downstairs shower room.

Upstairs, the home offers two further generously sized bedrooms. The property would benefit from modernisation and presents a fantastic opportunity to create a lovely family home in a sought-after location. Offered for sale chain free.

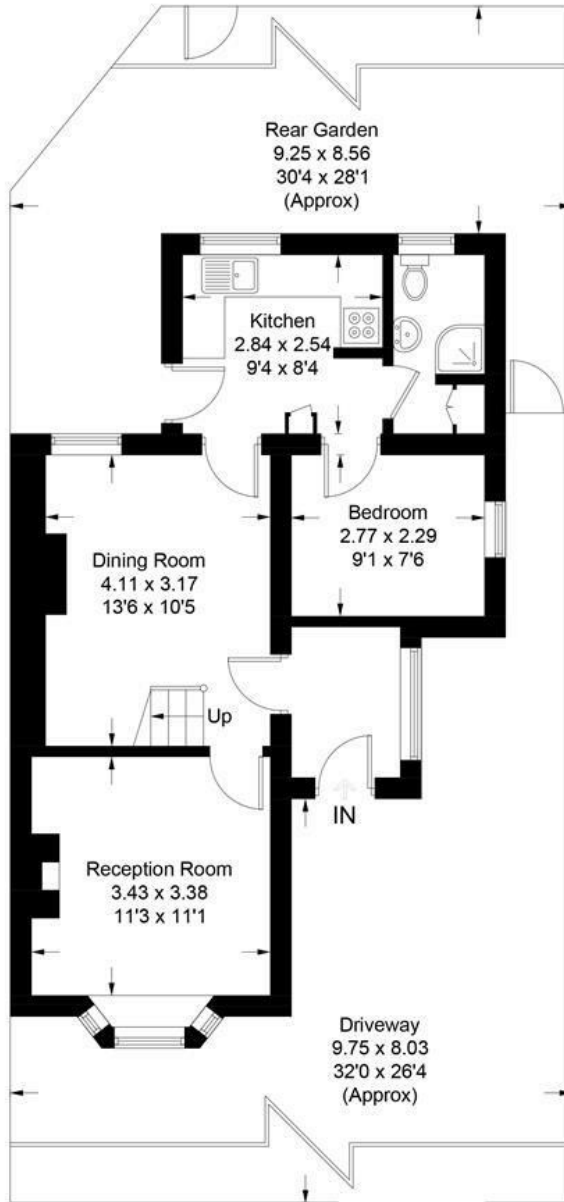
- 3 Bedroom End Of Terrace Cottage
- Wood Burner
- Generous Sized Plot
- Off Street Parking
- 2 Reception Rooms
- Entrance Porch
- Front and back Gardens
- Chain Free

# Floor Plan

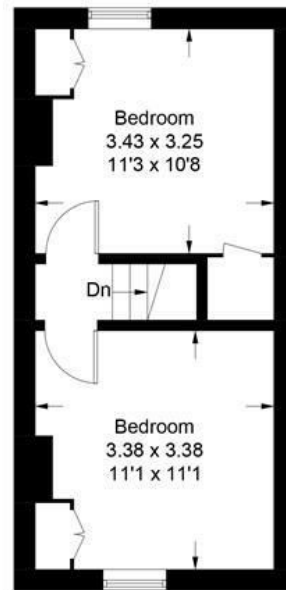
## Rushett Close



Approximate Gross Internal Area = 75.9 sq m / 817 sq ft



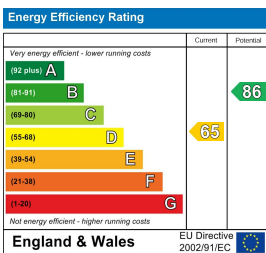
**Ground Floor**



**First Floor**

Illustration for identification purposes only, measurements are approximate, not to scale. Fourlabs.co © (ID1298793)

## Energy Efficiency Graph



These particulars, whilst believed to be accurate are set out as a general outline only for guidance and do not constitute any part of an offer or contract. Intending purchasers should not rely on them as statements of representation of fact, but must satisfy themselves by inspection or otherwise as to their accuracy. No person in this firm's employment has the authority to make or give any representation or warranty in respect of the property.