



Because property is personal with...

Thomas Street, Sleaford

BELVOIR!

£750 PCM



Key Features

- New Carpets & Blinds
- Newly Decorated
- 2 Double Bedrooms
- Luxury Shower Room
- Separate Dining Room
- Gas Central Heating
- EPC rating D





A beautifully presented, fully refurbished two bedroom terraced property centrally located in Sleaford. Comprises lounge with electric fire, dining room, modern fitted kitchen with oven, electric hob,, modern shower room with double shower. To the first floor two double bedrooms. Further benefits include a low maintenance yard to the rear.

No smokers.

Energy Efficiency Rating: D.

Council Tax Band: A

Fixed 6 month tenancy followed by month by month thereafter.

Lounge 3.74 x 3.54 (12'3" x 11'7")

Dining Room 3.54 x 3.19 (11'7" x 10'5")

Kitchen 3.30 x 1.49 (10'9" x 4'10")

Shower Room 2.18 x 2.09 (7'1" x 6'10")

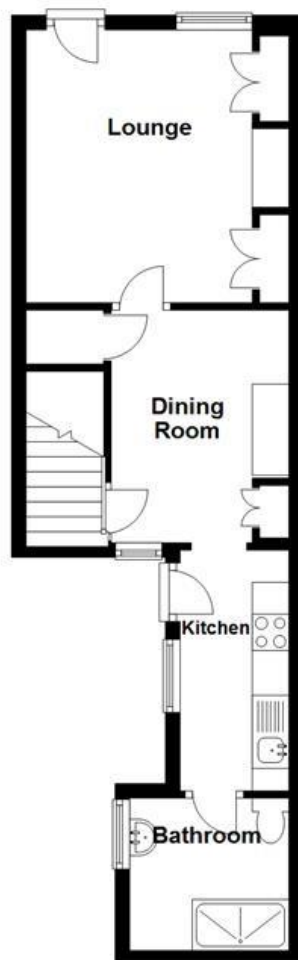
Bedroom One 3.62 x 3.60 (11'10" x 11'9")

Bedroom Two 3.18 x 2.76 (10'5" x 9'0")



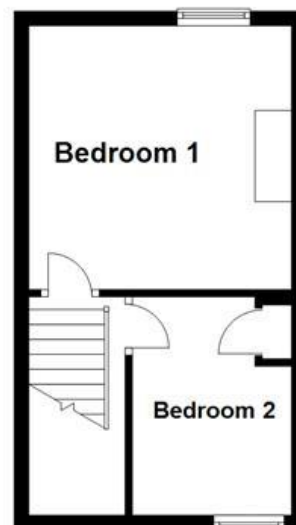
Ground Floor

Approx. 36.1 sq. metres (388.9 sq. feet)



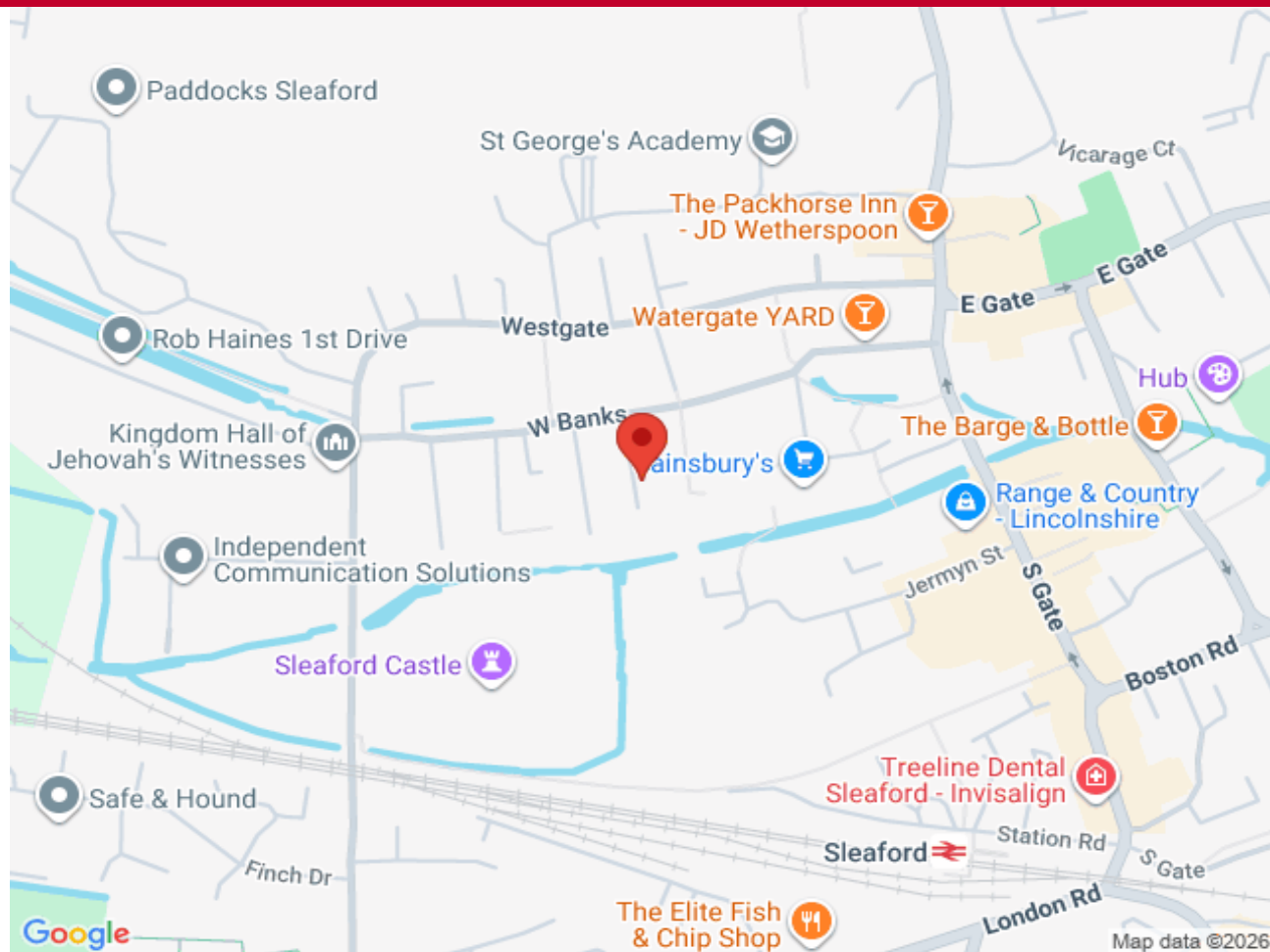
First Floor

Approx. 24.2 sq. metres (260.0 sq. feet)



Total area: approx. 60.3 sq. metres (648.8 sq. feet)

Measurements: These approximate room sizes are only intended as general guidance. You must verify the dimensions carefully before ordering carpets or any built in furniture
Plan produced using PlanUp.



BELVOIR!