

# Parkheath

*Sold on Service*

**Shearwater Drive NW9**

**£1,350 PCM (£312 per week) - Barnet Band B**



Spacious studio/one-bedroom apartment with private balcony

Reception with contemporary open-plan fitted kitchen

Bathroom/WC

Double glazed windows

Approx. 0.4 miles to Hendon Thameslink Station, with local amenities nearby

West Hampstead Office 020 7794 7111

Set within a modern development with lift access and communal gardens

Separate sleeping/bedroom area

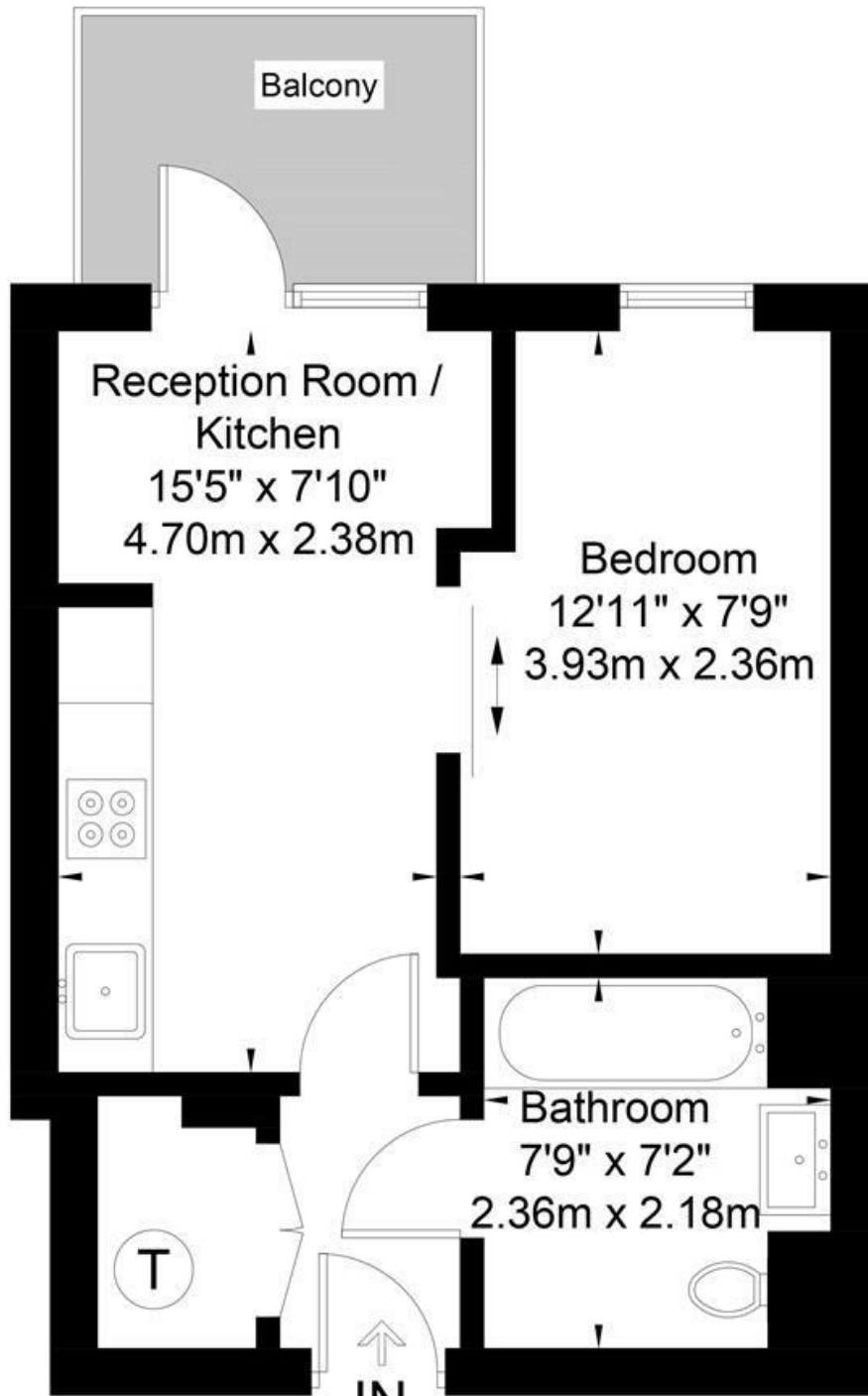
Tiled flooring throughout

Communal heating and hot water

EPC: Rating B, Council Tax: Barnet band B

# Crested Court

Approximate Gross Internal Area = 31.6 sq m / 340 sq ft



## First Floor

Illustration for identification purposes only, measurements are approximate, not to scale. FloorplansUsketch.com © 2017 (ID 369114)

The particulars do not constitute part of an offer or contract. The particulars, including text, photographs and plans, are for the guidance only of prospective purchasers/tenants and must not be relied upon as statements of fact. The descriptions provided therein represent the opinion of the author and whilst given in good faith should not be construed as statements of fact. Nothing in these particulars shall be deemed a statement that the property is in good condition or otherwise or that any services or facilities are in good working order. All measurements are approximate