



LINKS ROAD, SW17

£975,000

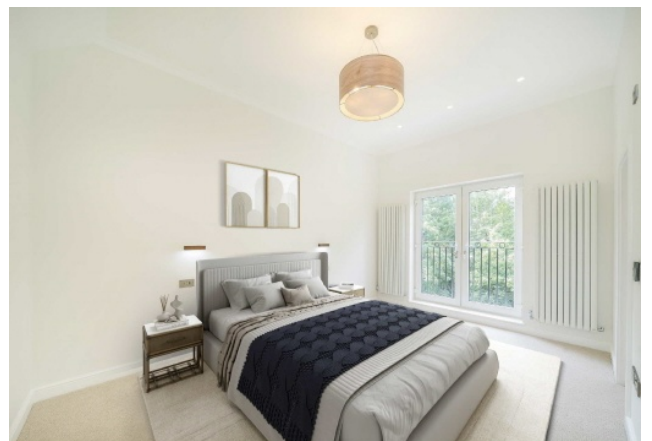
- Edwardian house
- Beautifully presented
- Four bedrooms
- No onward chain
- South facing garden
- Energy rating: C





ABOUT THE HOME

A beautifully renovated and architecturally designed four-bedroom, two-bathroom terraced home. The property which has been extensively refurbished, benefits from new wiring and plumbing, underfloor heating, to the upper floors and air conditioning throughout the property. Offering approximately 1,605 sq ft of designed living space, the accommodation combines contemporary luxury with practical family living. The ground floor features a stylish reception room with a bespoke media wall, fitted alcove cabinetry, and oak herringbone flooring throughout. There is also a guest WC and cleverly designed under-stair storage. To the rear, a stunning full-width kitchen extension incorporates a central island, integrated appliances, and a separate utility room. Crittall Bi-fold doors open onto a south-facing garden, thoughtfully landscaped with decking and lawn, and providing rear access. The first floor comprises two generous double bedrooms with fitted wardrobes, including a principal room with a bay window, alongside a versatile third bedroom ideal as a nursery or home office. A striking family bathroom is finished with contrasting emerald tiles, a vanity unit. Occupying the top floor is an impressive principal suite with a walk-in dressing room, and a beautifully appointed en-suite bathroom.







Total area (approx.): 149.2 sq. m (1605.9 sq. ft)
(Excluding Eaves)

JACKSONS TOOTING

3 Upper Tooting Road, London,
SW17 7TS
Sales: 020 8487 3175
Lettings: 020 8487 3176

Energy Rating: C We aim to make our particulars both accurate and reliable. However they are not guaranteed; nor do they form part of an offer or contract. If you require clarification on any points then please contact us, especially if you're traveling some distance to view. Please note that appliances and heating systems have not been tested and therefore no warranties can be given as to their good working order.