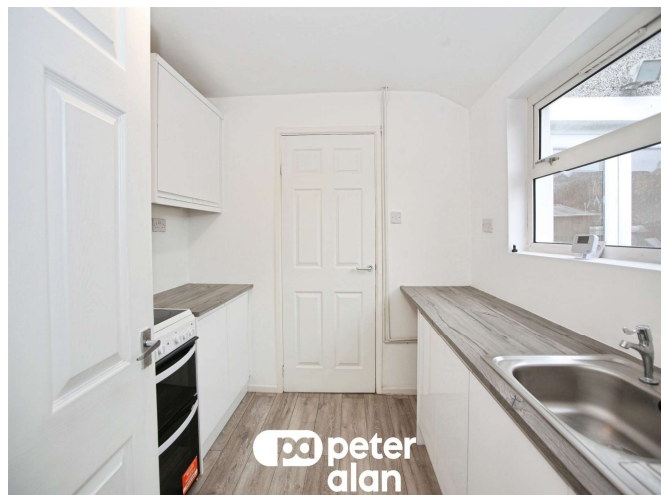




pa peter
alan

Pencoed Avenue, offers in excess of £160,000

- Modern Kitchen
- Modern Bathroom
- Two Reception Rooms
- Enclosed Rear Garden with outbuilding
- Immaculately presented
- No Chain
- Highly sought after location
- Close to local amenities
- EPC Rating: D



 3  1  1

pa peter
alan

01495 231199
blackwood@peteralan.co.uk



About the property

Situated on the sought-after Pencoed Avenue, this three-bedroom semi-detached property presents a fantastic opportunity for buyers looking to put their own stamp on a home. Offered to the market with no onward chain, the property is ideal for first-time buyers, families, or investors seeking a well-located property with great potential.

The accommodation briefly comprises an entrance hallway leading to a spacious and well-proportioned living area, providing a comfortable space for both relaxing and entertaining. The property also benefits from a fitted kitchen with ample storage and workspace, offering plenty of scope for modernisation if desired.

To the first floor are three bedrooms, all well-sized and offering flexible accommodation for family living, guest space, or a home office. The family bathroom serves the first floor and completes the internal layout.

Externally, the property benefits from off-road parking, providing convenient and secure parking to the front. The home sits within a well-established residential area and is ideally positioned close to local amenities, schools, and transport links, making it a practical choice for everyday living.



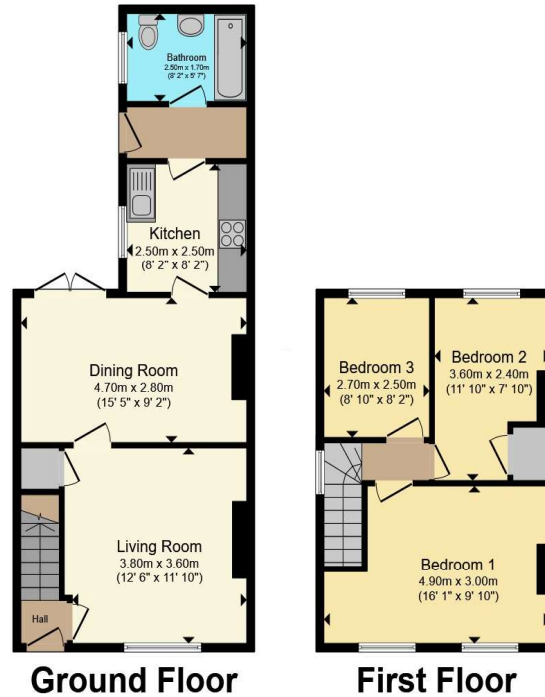
 peter
alan

Accommodation

01495 231199

blackwood@peteralan.co.uk

Floorplan



Total floor area 76.8 m² (826 sq.ft.) approx

This floor plan is for illustrative purposes only. It is not drawn to scale. Any measurements, floor areas (including any total floor area), openings and orientation are approximate. No details are guaranteed, they cannot be relied upon for any purpose and they do not form part of any agreement. No liability is taken for any error, omission or misstatement. A party must rely upon its own inspection(s). Powered by www.propertybox.io



Important Information

Note while we endeavour to make our sales details accurate and reliable, if there is any point which is of particular interest to you, please contact the office and we will be pleased to confirm the position for you. We have not personally tested any apparatus, equipment, fixtures, fittings or services and cannot verify they are in working order or fit for their purposes. Nothing in these particulars is intended to indicate that carpets or curtains, furnishings or fittings, electrical goods (whether wired or not). Gas fires or light fittings or any other fixtures not expressly included form part of the property offered for sale. This computer generated Floorplan, if applicable, is intended as a general guide to the layout and design of the property. It is not to scale and should not be relied upon for dimensions. Tenure: We cannot confirm the tenure of the property as we have not had access to the legal documents. The buyer is advised to obtain verification from their solicitor or surveyor.

Peter Alan Limited is registered in England and Wales under company number 2073153, Registered Office is Cumbria House, 16-20 Hockliffe Street, Leighton Buzzard, Bedfordshire, LU7 1GN. VAT Registration Number is 500 2481 05. For activities relating to regulated mortgages and non-investment insurance contracts, Peter Alan Limited is an appointed representative of Connells Limited which is authorised and regulated by the Financial Conduct Authority. Connells Limited's Financial Services Register number is 302221. Most buy-to-let

