



Flat 14, 42 Nevern Square | Earls Court | London | SW5 9PE

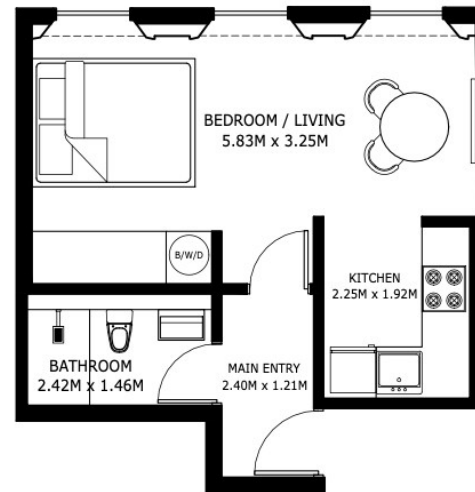
£2,200 PCM

SÉJOUR

**Flat 14, 42 Nevern Square
| Earls Court
London | SW5 9PE**

Set on the third floor of a refurbished period building in Nevern Square, this beautifully designed studio flat offers modern living in one of London's most sought-after locations.

- Stylish studio apartment
- Access to private residents' garden square
- Moments from Earl's Court Station (District & Piccadilly lines)
- Third-floor position within a refurbished period building
- Prime Nevern Square location
- Surrounded by cafés, restaurants and local amenities



UNIT 14

GROSS INTERNAL AREA
28.13 SQ.M. / 302.79 SQ.FT.

*SIZES AND DIMENSIONS ARE APPROXIMATE, ACTUAL MAY VARY.

Energy Efficiency Rating		Current	Potential
<i>Very energy efficient - lower running costs</i>			
(92 plus)	A		
(81-91)	B		
(69-80)	C	78	84
(55-68)	D		
(39-54)	E		
(21-38)	F		
(1-20)	G		
<i>Not energy efficient - higher running costs</i>			
England & Wales		EU Directive 2002/91/EC	

**Council Tax Band C
EPC Rating C**

**10 Cromwell Pl
South Kensington
London
SW7 2JN**

**020 3865 0611
lettings@cityrelay.com**