



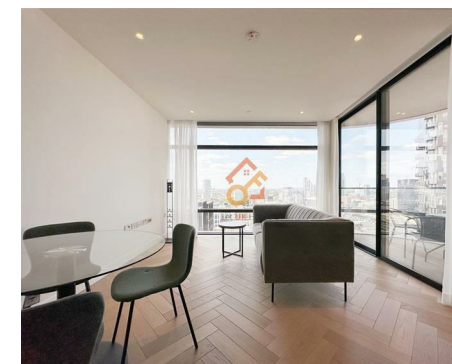
Let **UK** Home

2 Bedrooms

Flat

Located in London

£4,700 Per Month



info@letukhome.co.uk

<https://www.letukhome.co.uk/>

01795 358 886



2 Principal Place, Worship Street London

EC2A 2FE



Let UK Home are excited to offer this spectacular two bedroom apartment in the heart of Principal Tower in City of London.

This property comprises a large bright open plan kitchen and living room leading to a large private balcony with great views, two double bedrooms with wardrobe (master en-suite), a large family sized bathroom and ample storage.

The apartment will provide facilities such as concierge service, swimming pool, spa, gym, audio-visual room and private business lounge.

The apartment is close to the City of London, one of the most important financial centers in the world, and Shoreditch, one of the most creative and individual areas in London, with many cultural venues such as galleries, theater museums, and concert halls.

The development is surrounded by top schools and rich educational resources, including King's College London (KCL), London Business School, University College London (UCL), London School of Economics and Political Science (LSE), Cass Business School, City, University of London, and Queen Mary University of London (QMUL). Living here makes commuting to school very convenient.

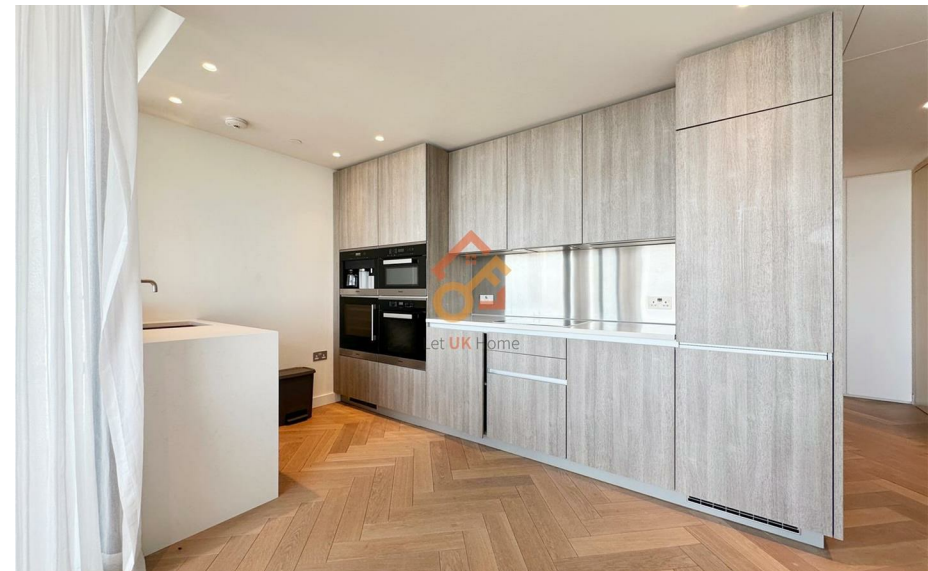
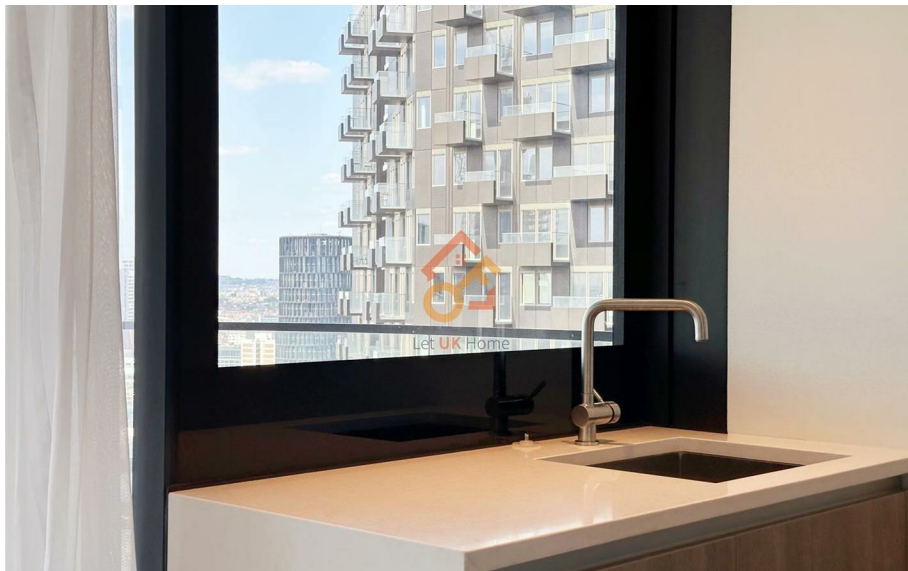
The development is right next to five major tube and train stations, like Liverpool Street, Shoreditch High Street, Old Street, and Moorgate. Liverpool Street Station is one of the busiest stations in the UK, with six tube lines intersecting here, including the Central Line, Circle Line, Hammersmith & City Line, Metropolitan

2 Principal Place, Worship Street London

£4,700 Per Month



- 22nd Floor
- Cinema & Game Room
- The Gym & The Spa
- City of London
- Virtual Viewing Available
- Concierge Service & 24h Security
- Swimming Pool
- Silicon Roundabout
- Shoreditch
- EPC Rating: B





Let **UK** Home

3F 2 Eastbourne Terrace
Paddington
London
W2 6LG

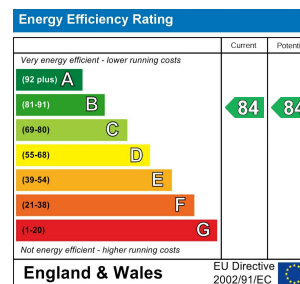
01795 358 886

info@letukhome.co.uk

Council Tax Band: F

Local Authority:

Agents Note: Whilst every care has been taken to prepare these particulars, they are for guidance purposes only. All measurements are approximate and are for general guidance purposes only and whilst every care has been taken to ensure their accuracy, they should not be relied upon and potential buyers/tenants are advised to recheck the measurements.



<https://www.letukhome.co.uk/>