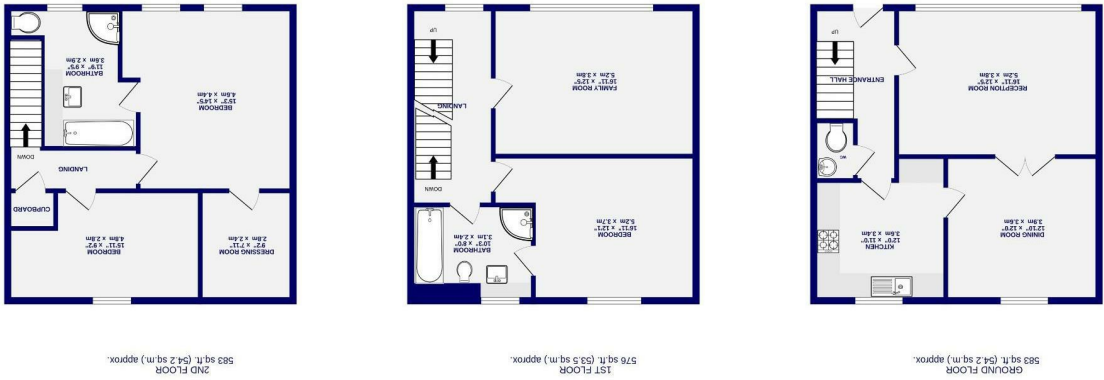




Summerhouse Mews Marygate, York YO30 7ED

Leasehold
Council Tax Band - F

- Modern Townhouse
- Three / Four Bedrooms
- Central Location
- On Site Parking
- Gated Community
- Ideal Family Home
- Offered No Onward Chain
- EPC - C



While every attempt has been made to ensure the accuracy of the floorplans, measurements of rooms and any other areas are approximate. It is the purchaser's responsibility to verify the accuracy of the floorplans for their own purposes. The floorplans are shown for illustrative purposes only and should be used as a guide only. The floorplans are not to be used for any other purpose. The floorplans are not to be used for any other purpose. The floorplans are not to be used for any other purpose.

These particulars have been prepared as accurately and as reliably as possible, but should not be relied upon as 'statement of fact'. If there is any point which is of particular importance to you, please contact the office and we would be pleased to check the information. We have not tested any services, appliances, equipment or facilities and nothing in these particulars should be deemed to be a statement that they are in good working order, or that the property is in good structural condition or otherwise. Any areas, measurements, floor plans or distances referred to are given as a guide only and are not precise. Purchasers must satisfy themselves by inspection or by otherwise regarding the items mentioned above and as to the correctness of each of the statements contained in these particulars. No person in the employment of Ashtons has any authority to make or give any representation or warranty whatsoever in relation to this property or these particulars nor enter into any contract relating to the property on behalf of the vendor.

Summerhouse Mews
Marygate, York
YO30 7ED

£750,000

3 2

Tucked away in a peaceful gated mews just off Marygate, this charming modern townhouse offers a rare opportunity to own a stylish home in one of York's most desirable locations. Summerhouse Mews is a discreet, boutique development built around 2005, ideally placed for both the city centre and the railway station, with Bootham and the Museum Gardens just moments away.

The property is well presented throughout and arranged over three floors, offering flexible and well balanced accommodation. The ground floor includes an entrance hall with cloakroom/WC, a well equipped kitchen and dining space, and an additional reception room to the rear which opens out to the garden. On the first floor is a spacious sitting room, along with the principal bedroom which benefits from a dressing area and en suite bathroom. The second floor features two further bedrooms and a family bathroom, making this a versatile home that would suit a range of lifestyles, including families, professionals or those looking to downsize without compromising on space.

To the rear is a courtyard garden, well planted with mature shrubs with the benefit of patio areas. The property also benefits from an allocated parking space behind secure electric gates, as well as access to a communal bike store.

Properties in this exclusive development are rarely available, and early viewing is highly recommended to appreciate the space, setting and convenience of this superb Marygate home. Offered with no onward chain.

Leasehold
Length of Lease : 979 years remaining
Service charge: £1491.89 p/a

Council Tax Band - F

