



Alex & Matteo
ESTATE AGENTS



Cherry Garden Street, London, SE16 4PD

NO HMO LICENCE - SUITABLE FOR A COUPLE, A FAMILY OR TWO SHARERS

A naturally bright three-bedroom apartment, steps from the River Thames in one of Bermondsey's most sought-after locations.

The property offers a bright and spacious living room with space to dine, a modern separate kitchen with plenty of storage, three double bedrooms, two currently used as home offices, a stylish en-suite bathroom, and a well-appointed family bathroom.

The apartment is located moments from Bermondsey Underground and Rotherhithe Overground stations, as well as a great selection of local cafés, a Sainsbury's and a Tesco. The Bermondsey Biscuit Factory regeneration and Canada Water Masterplan are just nearby, while Southwark Park and the charm of Rotherhithe Village are just around the corner. Shad Thames, award-winning markets like Maltby Street and Spa Terminus, and an impressive array of restaurants, bars, artisan bakeries and breweries nestled under the railway arches are all less than a 15-minute walk away.

- Generous three-bedroom apartment
- Close to local amenities
- Modern kitchen
- Excellent transport links
- Plenty of storage
- Landlord open to converting office to bedroom as needed

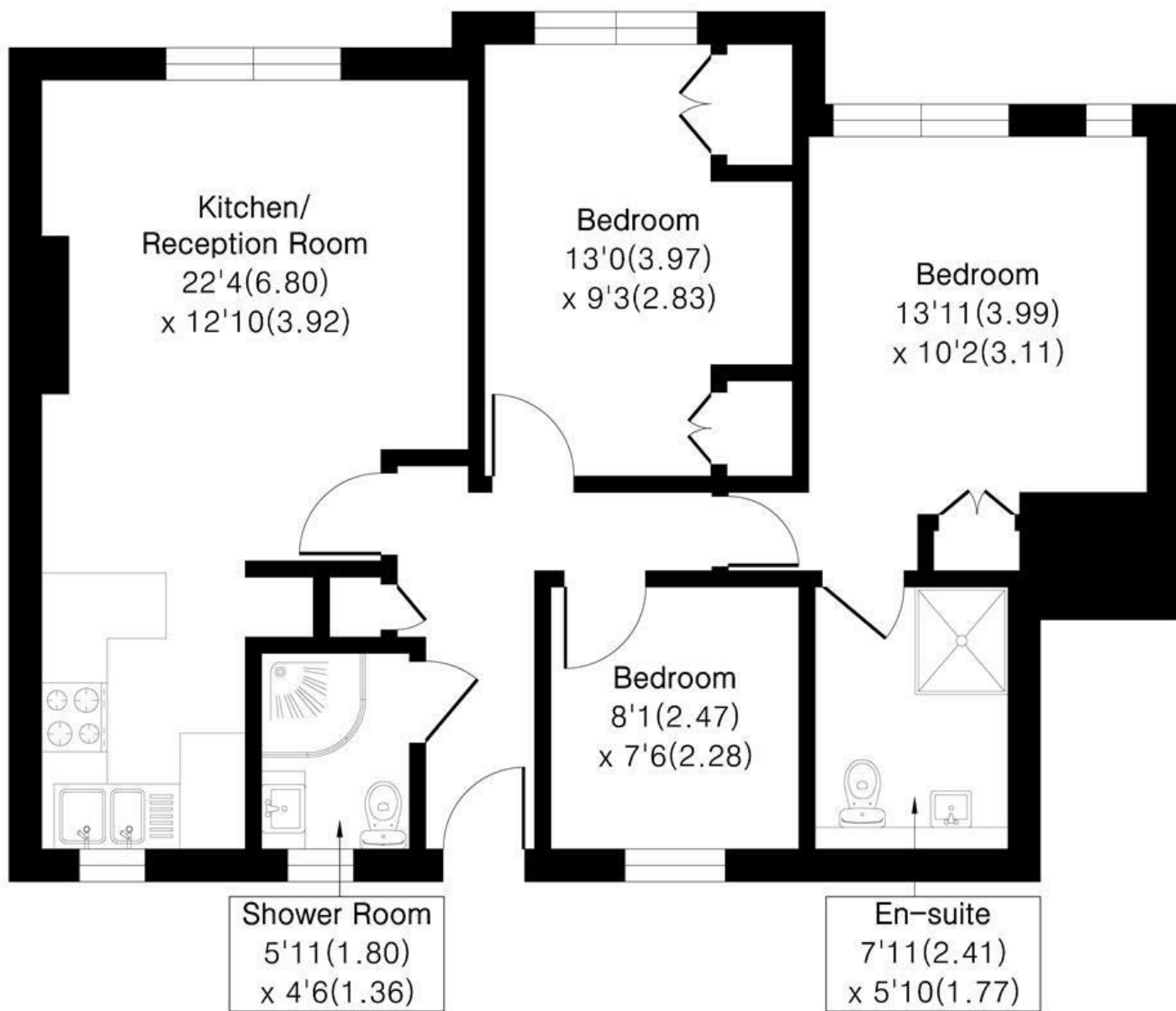
Alex & Matteo
ESTATE AGENTS

£2,400 Per month

Cherry Garden Street London, SE16 4PD

Approximate Area = 732 sq ft / 67.9 sq m

For identification only - Not To Scale



First Floor



Floor plan Produced in accordance with RICS Property Measurement 2nd Edition.
Incorporating International Property Measurement Standards (IPMS2 Residential).
Produced for Alex & Matteo Estate Agents.

