



Casewick Road, SE27 | Guide Price £1,075,000

02087029888

[westnorwood@pedderproperty.com](mailto:westnorwood@pedderproperty.com)

**pedder**  
We live local



# In General

- Four double bedrooms
- Two bathrooms
- Chain Free
- South facing garden
- Over 1,950 sq ft
- Great location
- Close to good schools
- Semi detached
- Ample storage
- Outside utility room & pantry space

# In Detail

\*GUIDE PRICE £1,075,000 - £1,100,000\*

A charming period four-bedroom semi-detached house, ideally located in the heart of West Norwood, SE27.

Upon entering this beautiful home, you are welcomed into the first reception room, featuring large sash windows, original wooden flooring, a stunning fireplace, and a characterful ceiling rose. This leads through to a spacious dining room and open-plan kitchen, complete with wooden worktops and ample preparation space.

To the rear of the property is a second reception room with French doors that flood the space with natural light and open out onto a 45ft south-facing garden. This room also benefits from an attractive iron fireplace.

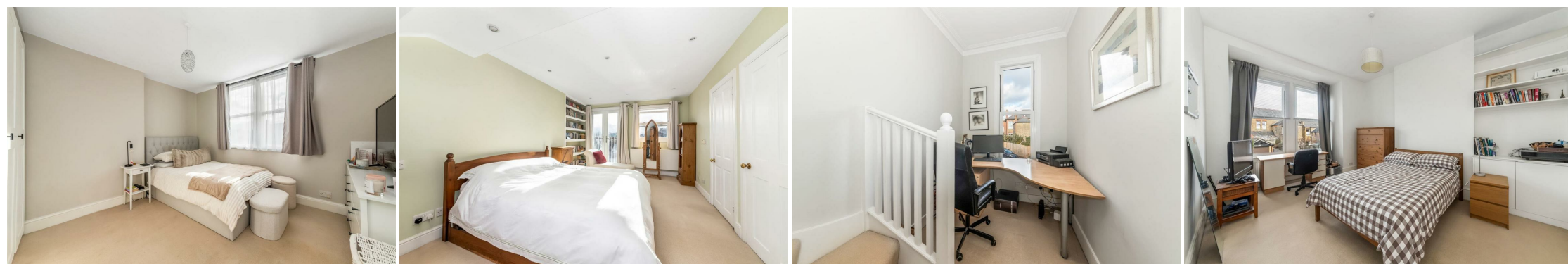
The first floor comprises three generous double bedrooms and a convenient snug area in the hallway, ideal for working from home. There is a large family bathroom featuring stylish panelling, a beautiful roll-top bath, a separate shower cubicle, and an additional WC.

Occupying the top floor is an impressive principal bedroom with an en-suite bathroom and a Juliet balcony.

Casewick Road is one of West Norwood's most desirable addresses, known for its friendly community and close proximity to excellent schools, local amenities, cafés, restaurants, and transport links.

The property is ideally situated within easy reach of both West Norwood and Tulse Hill stations, offering fast and convenient connections to London Bridge, Victoria, and the City.

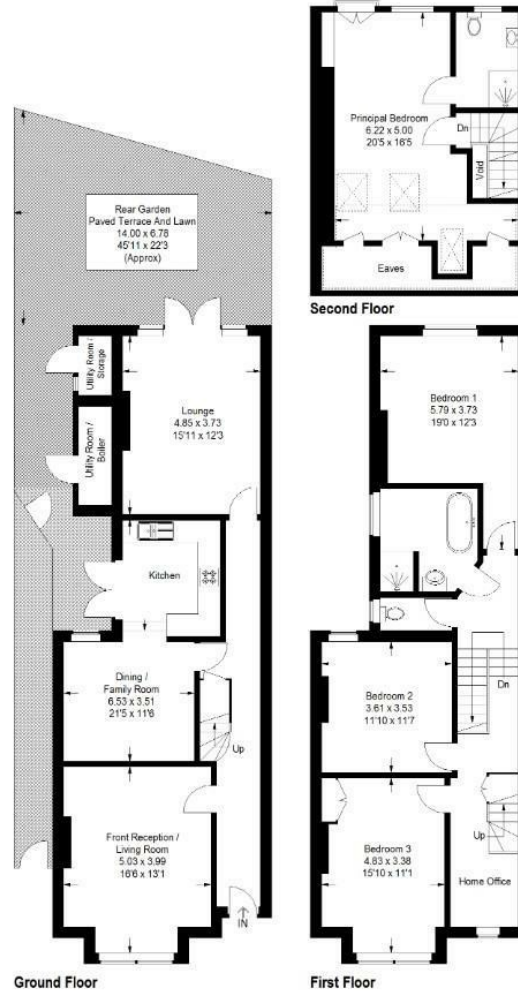
EPC: C | Council Tax Band: E



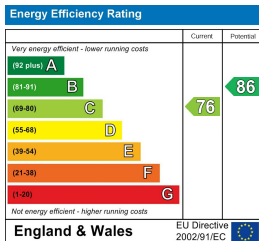
# Floorplan

Casewick Road, SE27

Approximate Gross Internal Area  
(Excluding Void / Utility Room / Storage)  
182.0 sq m / 1959 sq ft



Copyright www.pedderproperty.com © 2026  
These plans are for representation purposes only as defined by RICS - Code of Measuring Practice.  
Not drawn to Scale. Windows and door openings are approximate. Please check all dimensions, shapes and compass bearings before making any decisions reliant upon them.



Pedder Property Ltd trading as Pedder for themselves and for the vendor/landlord of this property whose agents they are, give notice that (1) these particulars do not constitute any part of an offer or contract, (2) all statements contained within these particulars are made without responsibility on the part of Pedder or the vendor/landlord, (3) whilst made in good faith, none of the statements contained within these particulars are to be relied upon as a statement of representation or fact, (4) any intending purchaser/tenant must satisfy him/herself by inspection or otherwise as to the correctness of each of the statements contained within these particulars, (5) the vendor/landlord does not make or give either Pedder or any person in their employment any authority to make or give representation or warranty whatsoever in relation to this property.