
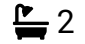



Old Oak Close, Wymondham, NR18

Offers In Region Of £250,000

 2  2  1



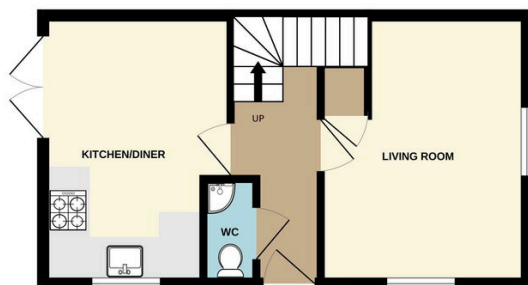
Moneyproperties are delighted to bring to market this generous two-bedroom semi-detached house offering approximately 700sq ft of living space. The property comes to market chain free. The ground floor consists of an entrance hall, 13ft dual aspect living room, open plan kitchen/diner and downstairs wc. To the upstairs comes two dual aspect double bedrooms with built in wardrobes in the first along with a bathroom off the landing. To the outside the property enjoys an enclosed private rear garden, single garage with power and lighting and off-road parking for 2/3 cars.

Tenure: Freehold EPC: TBC Council Tax: B

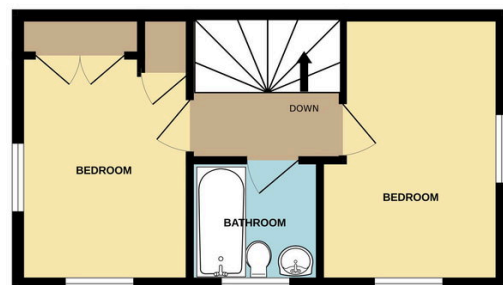
Key Features

- Spacious two-bedroom semi-detached house • Offering approximately 700sq ft of living space
- Two dual aspect double bedrooms with built in wardrobes to bedroom one
- Located in a quiet cul de sac on a popular residential development
- Adjacent single garage with power and electrics with off-road parking
- Ideal purchase for first-time buyers, small families and investors
- 13ft dual aspect living room and open plan kitchen/diner
- 23ft low maintenance and private rear garden not overlooked to the rear
- Offered with no onward chain
- See our full online listing for further details including flood risk, broadband speed and other material information

GROUND FLOOR



1ST FLOOR



Whilst every attempt has been made to ensure the accuracy of the floorplan contained here, measurements of doors, windows, rooms and any other items are approximate and no responsibility is taken for any error, omission or mis-statement. This plan is for illustrative purposes only and should be used as such by any prospective purchaser. The services, systems and appliances shown have not been tested and no guarantee as to their operability or efficiency can be given.
Made with Metropix ©2026