



15 Heysham Drive, Watford  
£475,000



 fairfieldestates



## 15 Heysham Drive

Watford

This well-presented four bedroom terraced house offers spacious and versatile accommodation, making it an excellent choice for families or those seeking generous living space. Offered with no upper chain, the property is ready for immediate occupation.

Council Tax band: C

Tenure: Freehold

EPC Energy Efficiency Rating: C

EPC Environmental Impact Rating: D

- NO UPPER CHAIN
- GAS C/HEATING & UPVC D/GLAZING
- REPLACEMENT KITCHEN
- REPLACEMENT BATHROOM
- 17'10 X 15 BEDROOM 1
- MODERN EN-SUITE
- LONG GARDEN
- 4 CAR OWN DRIVE PARKING
- COUNCIL TAX - E
- EPC RATING - C

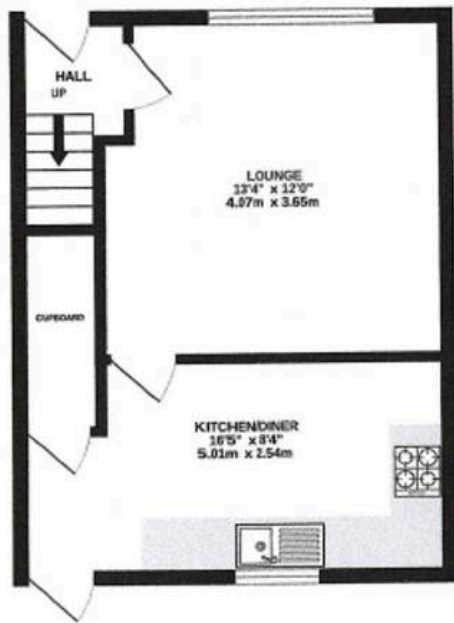




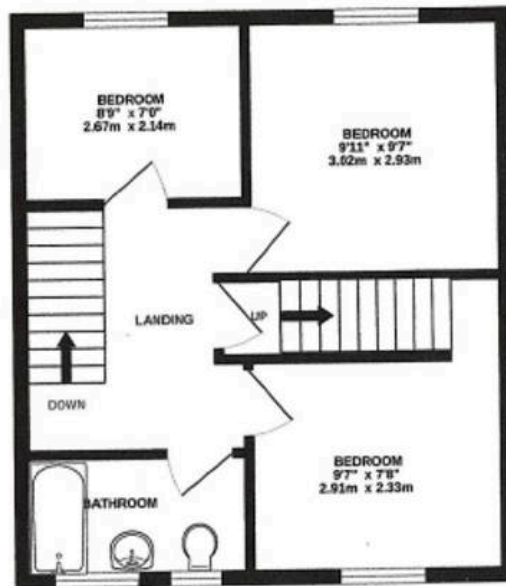




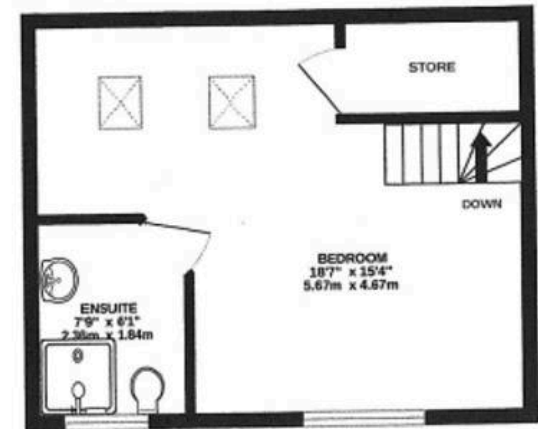
GROUND FLOOR  
350 sq.ft. (32.6 sq.m.) approx.



1ST FLOOR  
397 sq.ft. (36.8 sq.m.) approx.



2ND FLOOR  
285 sq.ft. (26.5 sq.m.) approx.



TOTAL FLOOR AREA : 1032 sq.ft. (95.9 sq.m.) approx.

Whilst every attempt has been made to ensure the accuracy of the floorplan contained here, measurements of doors, windows, rooms and any other items are approximate and no responsibility is taken for any error, omission or mis-statement. This plan is for illustrative purposes only and should be used as such by any prospective purchaser. The services, systems and appliances shown have not been tested and no guarantee as to their operability or efficiency can be given.  
Made with Metropix ©2026





## Fairfield – Oxhey

1 Station Approach, Watford – WD19 7DT

020 8428 0540 • [rob@fairfieldstates.co.uk](mailto:rob@fairfieldstates.co.uk) • [fairfieldstates.co.uk/](http://fairfieldstates.co.uk/)

We have prepared these particulars as a general guide of the property and they are not intended to constitute part of an offer or contract. We have not carried out a detailed survey of the property and we have not tested any apparatus, fixtures, fittings, or services. All measurements and floorplans are approximate, and photographs are for guidance only. These should not be relied upon for the purchase of carpets or any other fixtures or fittings. Lease details, service