



ROEHAMPTON CLOSE, SW15

£625,000

1930s Art Deco apartment

Two double bedrooms

Dining room

Reception room

Kitchen

Roehampton Close

@marshandparsons
marshandparsons.co.uk

MARSH &
PARSONS



ABOUT THE PROPERTY

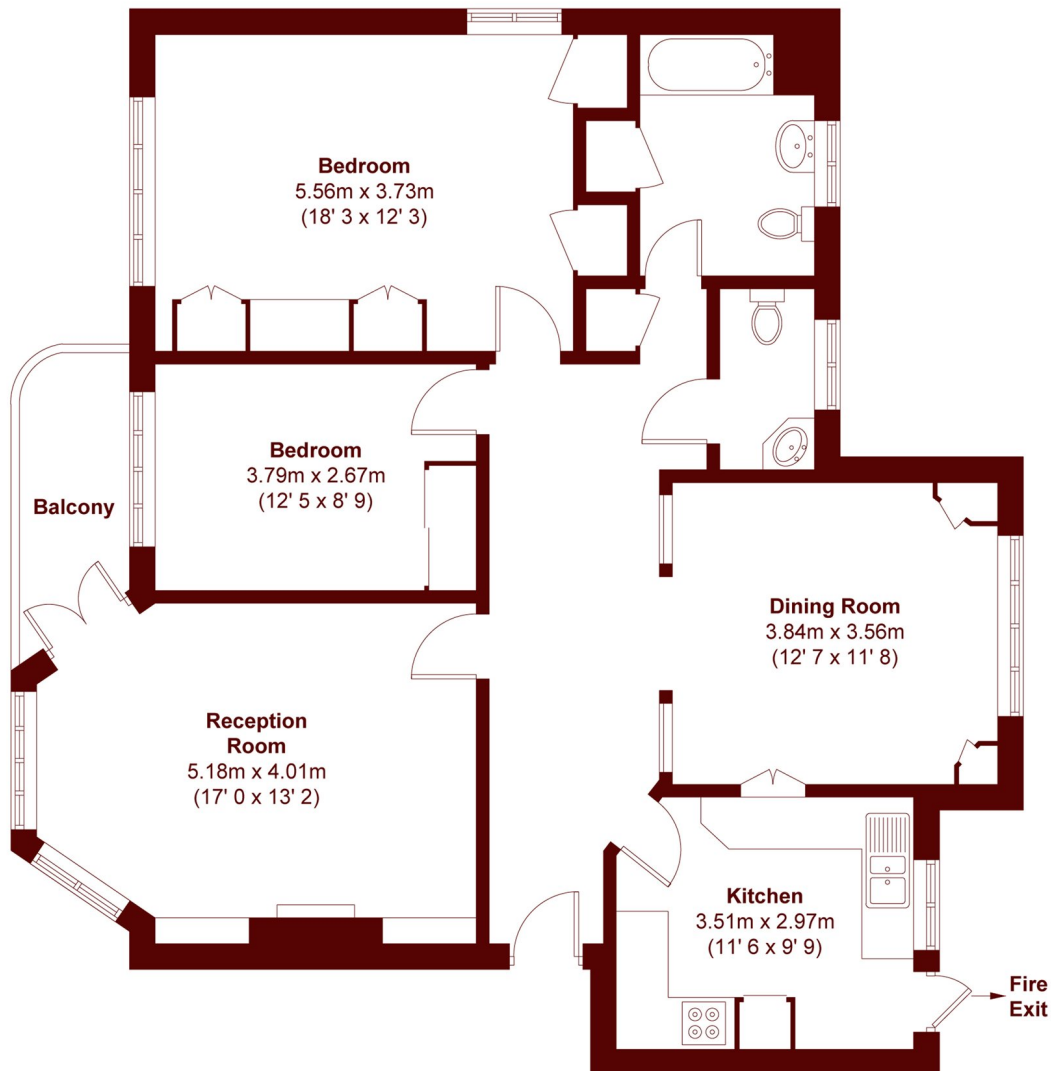
Marsh & Parsons are delighted to bring this second floor apartment which is very well positioned within the quiet residential development of Roehampton Close.

The property comprises reception room with private balcony overlooking the quadrant. A spacious kitchen, separate dining room, principal bedroom with fitted wardrobes, further double bedroom, family bathroom. The property benefits from communal gardens and off-street parking.

The close benefits from a longstanding porter service, communal gardens and private off-street car parking.



STEP INSIDE ROEHAMPTON CLOSE



APPROX. GROSS INTERNAL FLOOR AREA = 1096 SQFT / 101.8 SQM
APPROX. GROSS EXTERNAL BALCONY AREA = 44 SQFT / 4.1 SQM

Barnes & East Sheen
020 8563 8333

Energy Rating: C We aim to make our particulars both accurate and reliable. However, they are not guaranteed; nor do they form part of an offer or contract. If you require clarification on any points then please contact us, especially if you're traveling some distance to view. Please note that appliances and heating systems have not been tested and therefore no warranties can be given as to their good working order

**MARSH &
PARSONS**