







Holly Cottage

Trouthall Lane, Plumley

A beautifully refurbished 2-bed country cottage with open-plan living, stylish kitchen, landscaped gardens, off-road parking, and high-quality finishes throughout. Turn-key and move-in ready.

Council Tax band: E

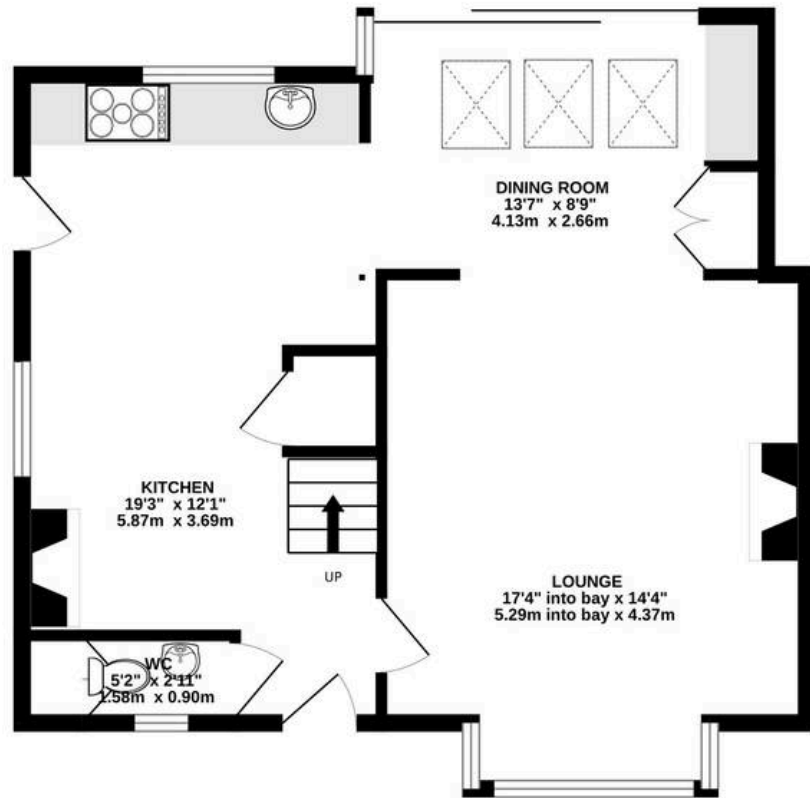
Tenure: Freehold

EPC Energy Efficiency Rating: D

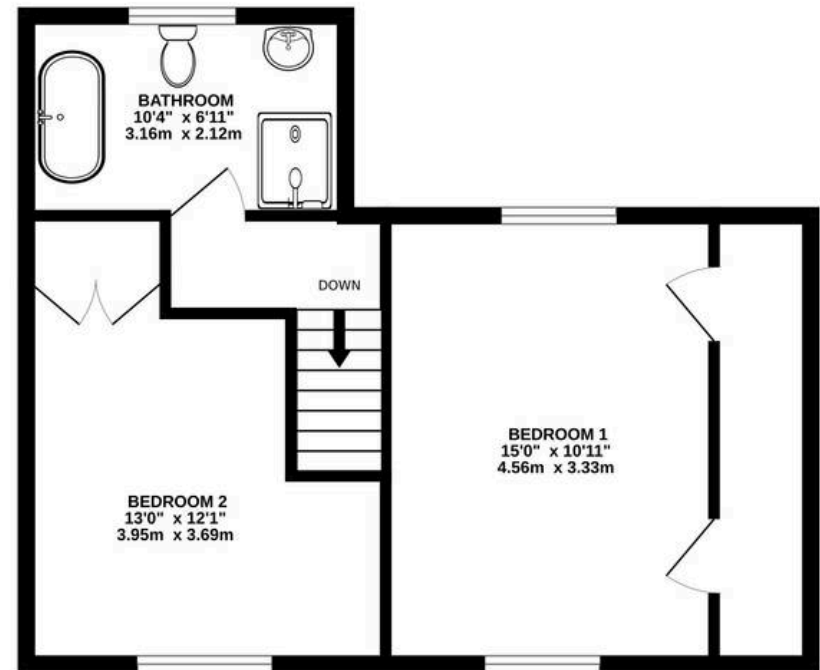
- Beautifully refurbished and extended country cottage, combining period charm with stylish contemporary finishes throughout.
- Almost 1,100 sq. ft. of flowing accommodation, thoughtfully designed for modern open-plan living.
- Elegant lounge with bay window and feature fireplace, creating a warm and inviting space to relax.
- Superb kitchen with casual dining and a formal dining area, ideal for everyday living and entertaining, with direct garden access.
- Two generous double bedrooms and a luxurious family bathroom with bath and separate shower.
- Private southerly front garden, landscaped rear entertaining space, ambient lighting and gated driveway parking.



GROUND FLOOR
601 sq.ft. (55.8 sq.m.) approx.



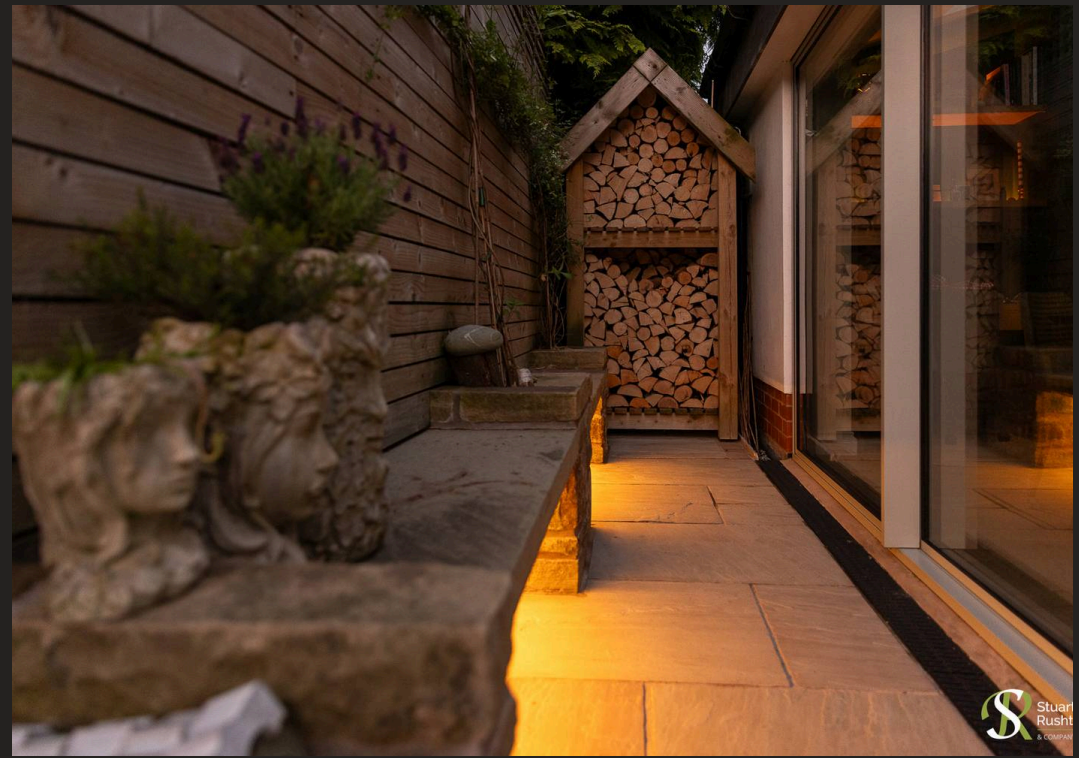
1ST FLOOR
473 sq.ft. (43.9 sq.m.) approx.



TOTAL FLOOR AREA : 1073 sq.ft. (99.7 sq.m.) approx.

Whilst every attempt has been made to ensure the accuracy of the floorplan contained here, measurements of doors, windows, rooms and any other items are approximate and no responsibility is taken for any error, omission or mis-statement. This plan is for illustrative purposes only and should be used as such by any prospective purchaser. The services, systems and appliances shown have not been tested and no guarantee as to their operability or efficiency can be given.

Made with Metropix ©2026





Stuart Rushton & Company

Stuart Rushton & Co, 35 King Street – WA16 6DW

01565 757000

enquiries@srushton.co.uk

www.srushton.co.uk



We are not authorised to make or give any representations or warranties in relation to the property either here or elsewhere. We assume no responsibility for any statement that may be made in these particulars, and they do not form part of any offer or contract and must not be relied upon as statements or representation of fact. Any areas, measurements or distances are approximate. The text, photographs and plans are for guidance only. Importantly, it should not be assumed that the property has all necessary planning, building regulations or other consents and we have not tested any services, equipment or facilities. Purchasers must satisfy themselves by inspection or otherwise.