

# SHIREBROOK

DERBYSHIRE

platform   
**home**  
OWNERSHIP



# PLATFORM HOME OWNERSHIP

---

At Platform Home Ownership, we're passionate about building quality homes for our customers and creating communities that homeowners can be proud of. It's our mission to build a better future for the UK - investing in affordable homes to ensure accessible routes to homeownership for everyone.

*Building A Better Future Through New Homes*

**INTRODUCTION**  
P. 04

**LOCAL AREA**  
P. 06

**CONNECTIVITY**  
P. 07

**SHARED OWNERSHIP**  
P. 08

**THE DEVELOPMENT**  
P. 09

**AVAILABLE HOMES**  
P. 10

**GET IN TOUCH**



**WELCOME TO  
SHIREBROOK, A  
STUNNING NEW  
COUNTRYSIDE  
DESTINATION.**

# THE WORLD AROUND YOU

Shirebrook is an increasingly popular place for homebuyers. Located just outside of Mansfield, it's home to all of the amenities you could imagine - schools, leisure facilities and local shops to pubs, supermarkets and entertainment - all within easy reach. With a friendly atmosphere, Shirebrook is ideal for families seeking a relaxed way of life in a beautiful setting.



## SHIREBROOK IS PERFECTLY CONNECTED IN EVERY DIRECTION MAKING IT A HOME BUYERS DREAM

**5 MILES**  
MANSFIELD

**23 MILES**  
SHEFFIELD

**26 MILES**  
NOTTINGHAM

**27 MILES**  
DERBY

### LOCAL AMENITIES

SUPERMARKET	2 MINUTES (CAR)	0.3 MILES
DOCTORS	1 MINUTES (CAR)	0.2 MILES
GYM	4 MINUTES (CAR)	1.1 MILES
LEISURE CENTRE	2 MINUTES (CAR)	0.3 MILES

### PLACES OF INTEREST

SHIREBROOK DESIGNER OUTLET	3 MINUTES (CAR)	1.0 MILES
PLAYPARK	2 MINUTES (CAR)	0.8 MILES
SHERWOOD FOREST	22 MINUTES (CAR)	7.4 MILES
RUFFORD PARK GOLF & COUNTRY CLUB	23 MINUTES (CAR)	12.6 MILES

### CONNECTIVITY

SHIREBROOK STATION	3 MINUTES (CAR)	0.8 MILES
A60	6 MINUTES (CAR)	2.8 MILES
MANSFIELD STATION	13 MINUTES (CAR)	6.0 MILES
M1	11 MINUTES (CAR)	6.2 MILES

### EDUCATION

SHIREBROOK ACADEMY	4 MINUTES (CAR)	1.6 MILES
PARK INFANT & JUNIOR SCHOOL	3 MINUTES (CAR)	0.7 MILES
ST JOSEPHS CATHOLIC PRIMARY	3 MINUTES (CAR)	0.9 MILES
STUBBIN WOOD SCHOOL & NURSERY	4 MINUTES (CAR)	1.3 MILES

Travel times are all shown in minutes and are representative of driving time. All times and distances are taken from [google.com/maps](https://www.google.com/maps)

# ABOUT SHARED OWNERSHIP

## BUY YOUR SHIREBROOK HOME THROUGH SHARED OWNERSHIP

Your dream home is more affordable than you may think with Shared Ownership. Shared Ownership means you can purchase part of your home and then pay rent on the remaining share. Typically, you can purchase 40-75% of your home, but lower shares are available. What's more, Shared Ownership is flexible, and allows you to increase your level of ownership over time if you choose to.

Whatever your looking for, we have a wide selection of homes perfect for whatever your needs.

Buying through Shared Ownership at this development means you can purchase between 10-75% of your property and pay a subsidised rent on the remaining share you don't own.

### HOW IT WORKS

- 1** BUY THE FIRST SHARE IN YOUR NEW HOME.
- 2** PAY RENT ON THE REMAINING SHARE
- 3** BUY MORE SHARES IN YOUR HOME LATER

### DID YOU KNOW?

Shared Ownership offers great flexibility, and you can purchase more of your home through staircasing whenever you are ready too.





# SHIREBROOK

DERBYSHIRE

**A STUNNING COLLECTION OF TWO, THREE  
AND FOUR-BEDROOM HOMES AVAILABLE  
THROUGH SHARED OWNERSHIP.**

Introducing Shirebrook, a beautiful new residential development at the heart of Derbyshire, made up of 63 stunning two, three and four-bedroom homes available via Shared Ownership. As one phase in a much wider scheme, Shirebrook represents not just a new destination but the beginning of a new community for the Derbyshire area.

GET TO KNOW

# SHIREBROOK

DERBYSHIRE

Shirebrook is an exclusive collection of two and three and four-bedroom homes offering new opportunities for first time buyers, downsizers and growing families.



**THE ATKINS**  
2 Bedroom Home



**THE ASHER**  
3 Bedroom Home



**THE BROOK**  
3 Bedroom Home



**THE ATKINS II**  
2 Bedroom Home



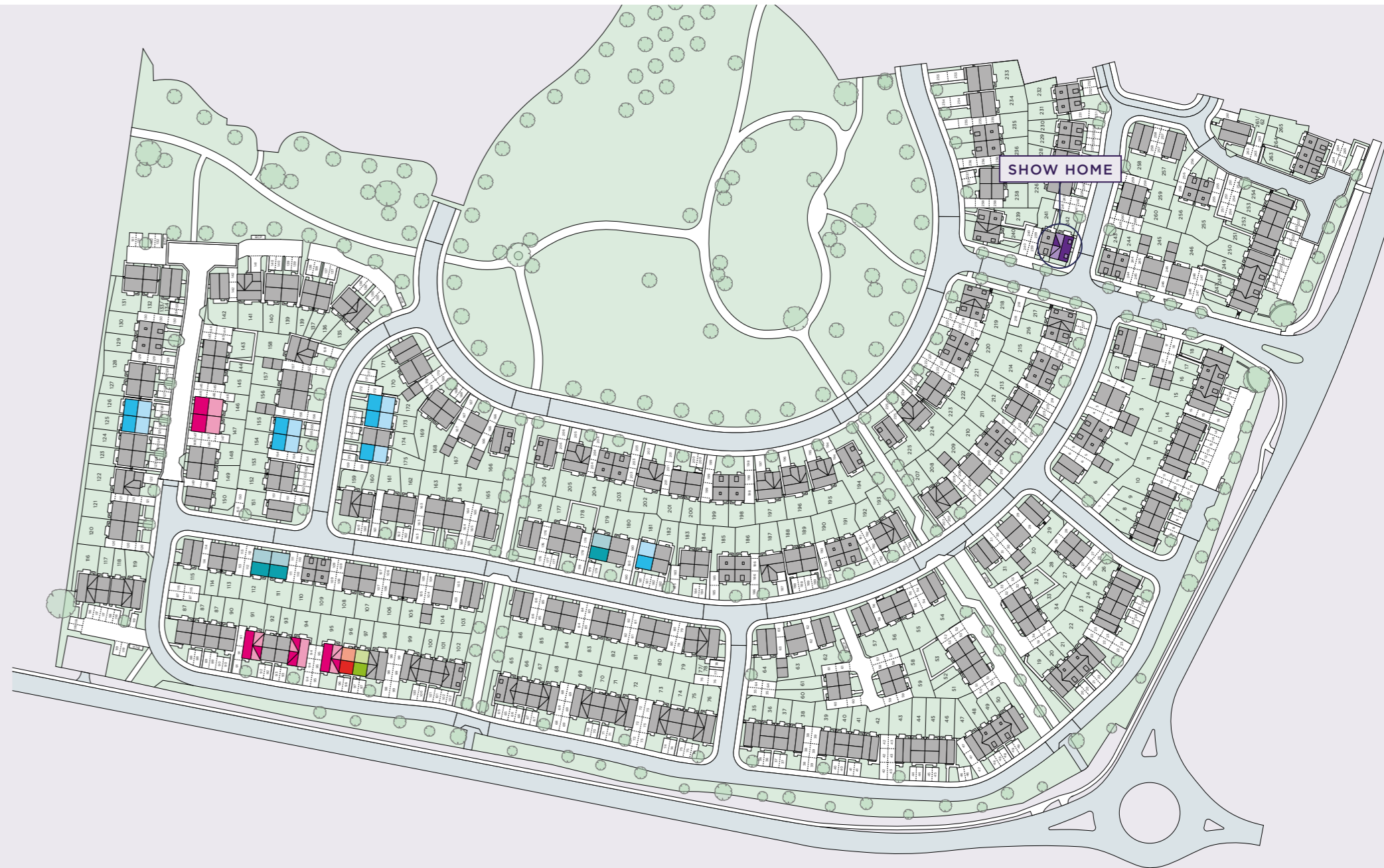
**THE ELMSIE**  
3 Bedroom Home



**THE MACARTHUR**  
4 Bedroom Home



**THE WYATT II**  
3 Bedroom Home



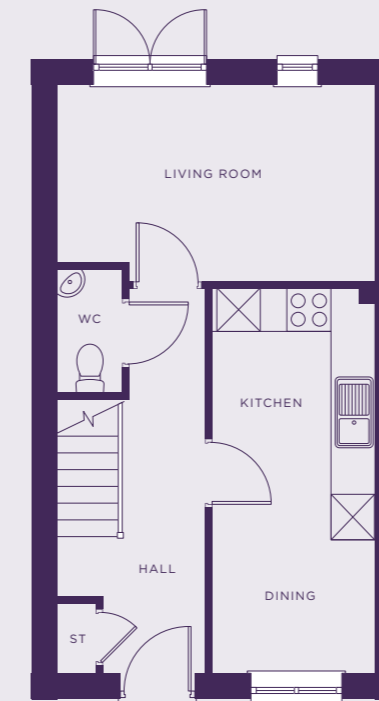


# THE ATKINS

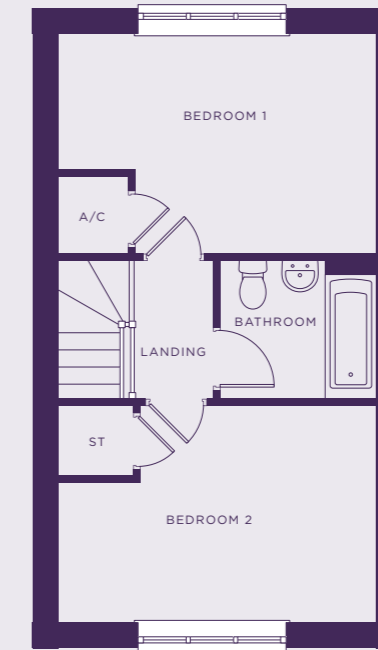
PLOTS 97

TOTAL 763 SQ FT

GROUND



FIRST



## SPECIFICATION

### Kitchen

- Modern fitted kitchen
- Stainless steel integral oven, hob & extract hood
- Space for washing machine & fridge/freezer
- Vinyl flooring to kitchen and WC
- Open plan Kitchen/dining

### Bathroom

- Family bathroom
- Shower over bath
- Three piece white suite
- Complimentary wall tiling
- Vinyl flooring to bathroom

### General

- Located near popular towns including Shirebrook and Mansfield, not far from Nottingham.
- Excellent links to the A60
- 2 parking spaces per property
- 10 Year build warranty

<b>Kitchen</b>	12.12 m <sup>2</sup>	17'6" x 7'5"
<b>Living Room</b>	12.23 m <sup>2</sup>	14'6" x 9'0"
<b>Bedroom 1</b>	13.61 m <sup>2</sup>	14'6" x 10'1"
<b>Bedroom 2</b>	13.35 m <sup>2</sup>	14'6" x 9'10"

This image is from an imaginary viewpoint within an open space area. Its purpose is to give a feel for the development, not an accurate description of each property. The illustration shows a typical Platform Home Ownership home of this type, but there are, however, variances from site to site. External materials, finishes, landscaping, windows and the position of garages, (where provided) may vary throughout the development. Properties may also be built handed (mirror image). Please ask for further details.



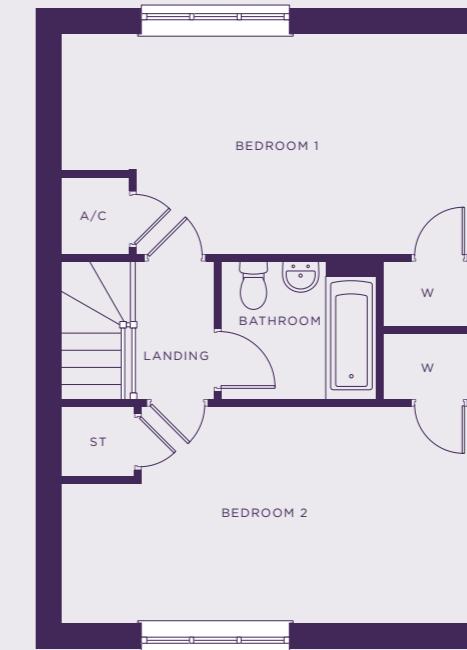
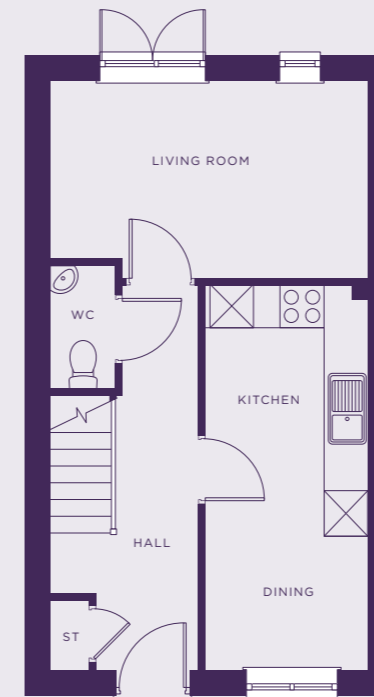
# THE ATKINS II

PLOTS 96

TOTAL 881 SQ FT

GROUND

FIRST



## SPECIFICATION

### Kitchen

- Modern fitted kitchen
- Stainless steel integral oven, hob & extract hood
- Space for washing machine & fridge/freezer
- Vinyl flooring to kitchen and WC
- Open plan Kitchen/dining

### Bathroom

- Family bathroom
- Shower over bath
- Three piece white suite
- Complimentary wall tiling
- Vinyl flooring to bathroom

### General

- Located near popular towns including Shirebrook and Mansfield, not far from Nottingham.
- Excellent links to the A60
- 2 parking spaces per property
- 10 Year build warranty

<b>Kitchen</b>	10.25 m <sup>2</sup>	11'6" x 9'7"
<b>Living Room</b>	13.86 m <sup>2</sup>	14'6" x 10'3"
<b>Bedroom 1</b>	13.61 m <sup>2</sup>	14'6" x 10'1"
<b>Bedroom 2</b>	13.35 m <sup>2</sup>	14'6" x 9'11"

This image is from an imaginary viewpoint within an open space area. Its purpose is to give a feel for the development, not an accurate description of each property. The illustration shows a typical Platform Home Ownership home of this type, but there are, however, variances from site to site. External materials, finishes, landscaping, windows and the position of garages, (where provided) may vary throughout the development. Properties may also be built handed (mirror image). Please ask for further details.



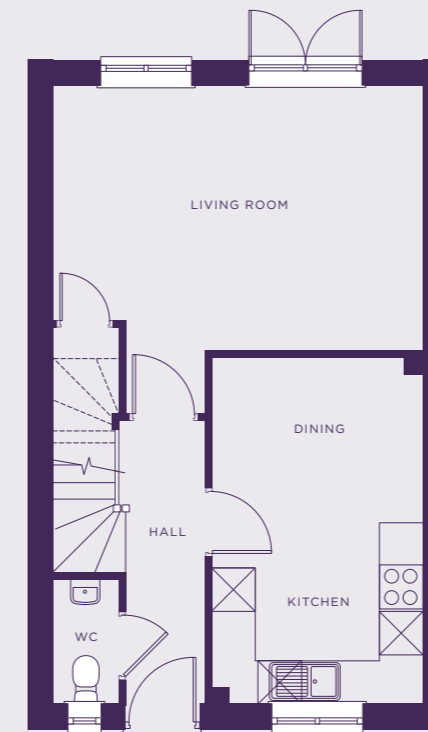
This image is from an imaginary viewpoint within an open space area. Its purpose is to give a feel for the development, not an accurate description of each property. The illustration shows a typical Platform Home Ownership home of this type, but there are, however, variances from site to site. External materials, finishes, landscaping, windows and the position of garages, (where provided) may vary throughout the development. Properties may also be built handed (mirror image). Please ask for further details.

# THE ELMSIE

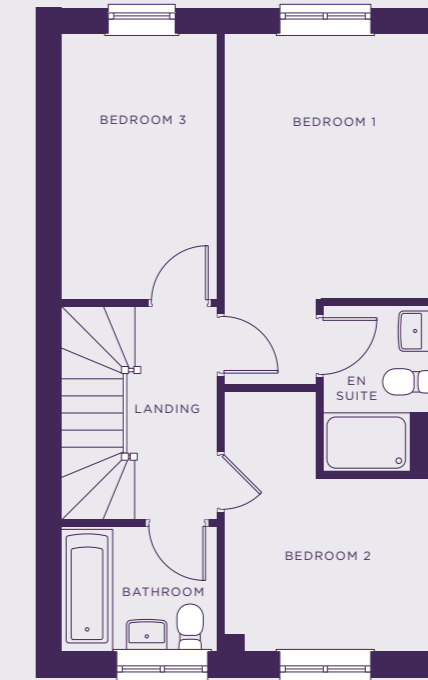
**PLOTS** 125, 126, 154, 155, 172, 173, 175 & 181

**TOTAL 934 SQ FT**

**GROUND**



**FIRST**



## SPECIFICATION

### Kitchen

- Modern fitted kitchen
- Stainless steel integral oven, hob & extract hood
- Space for washing machine & fridge/freezer
- Vinyl flooring to kitchen and WC
- Open plan Kitchen/dining

### Bathroom

- Family bathroom
- Shower over bath
- Three piece white suite
- Complimentary wall tiling
- Vinyl flooring to bathroom

### General

- Located near popular towns including Shirebrook and Mansfield, not far from Nottingham.
- Excellent links to the A60
- 2 parking spaces per property
- 10 Year build warranty

<b>Kitchen</b>	13.89 m <sup>2</sup>	15'8" x 9'6"
<b>Living Room</b>	18.47 m <sup>2</sup>	16'9" x 11'11"
<b>Bedroom 1</b>	10.47 m <sup>2</sup>	12'0" x 9'4"
<b>Bedroom 2</b>	6.75 m <sup>2</sup>	9'4" x 7'9"
<b>Bedroom 3</b>	7.85 m <sup>2</sup>	12'0" x 7'1"



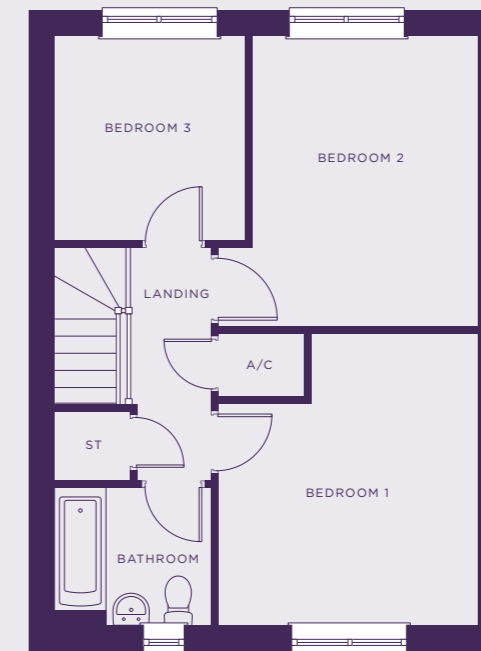
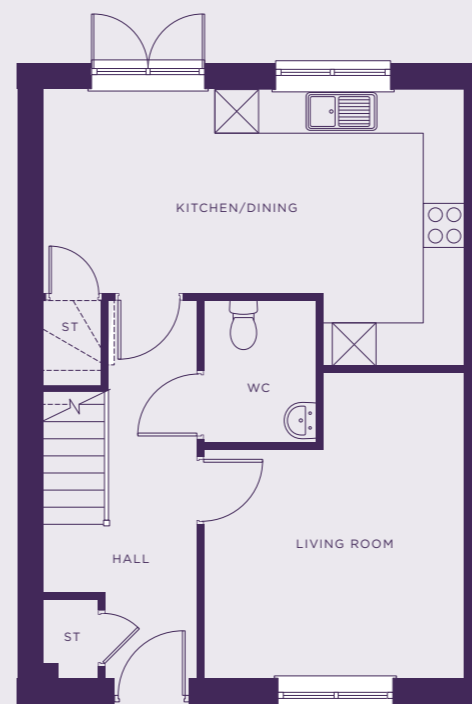
# THE ASHER

PLOTS 111, 112 & 179

TOTAL 1,034 SQ FT

GROUND

FIRST



## SPECIFICATION

### Kitchen

- Modern fitted kitchen
- Stainless steel integral oven, hob & extract hood
- Space for washing machine & fridge/freezer
- Vinyl flooring to kitchen and WC
- Open plan Kitchen/dining

### Bathroom

- Family bathroom
- Shower over bath
- Three piece white suite
- Complimentary wall tiling
- Vinyl flooring to bathroom

### General

- Located near popular towns including Shirebrook and Mansfield, not far from Nottingham.
- Excellent links to the A60
- 2 parking spaces per property
- 10 Year build warranty

<b>Kitchen / Dining</b>	13.31 m <sup>2</sup>	15'7" x 9'4"
<b>Living Room</b>	18.25 m <sup>2</sup>	15'10" x 12'0"
<b>Bedroom 1</b>	12.33 m <sup>2</sup>	11'10" x 11'11"
<b>Bedroom 2</b>	11.26 m <sup>2</sup>	11'11" x 10'6"
<b>Bedroom 3</b>	9.45 m <sup>2</sup>	10'11" x 9'2"

This image is from an imaginary viewpoint within an open space area. Its purpose is to give a feel for the development, not an accurate description of each property. The illustration shows a typical Platform Home Ownership home of this type, but there are, however, variances from site to site. External materials, finishes, landscaping, windows and the position of garages, (where provided) may vary throughout the development. Properties may also be built handed (mirror image). Please ask for further details.

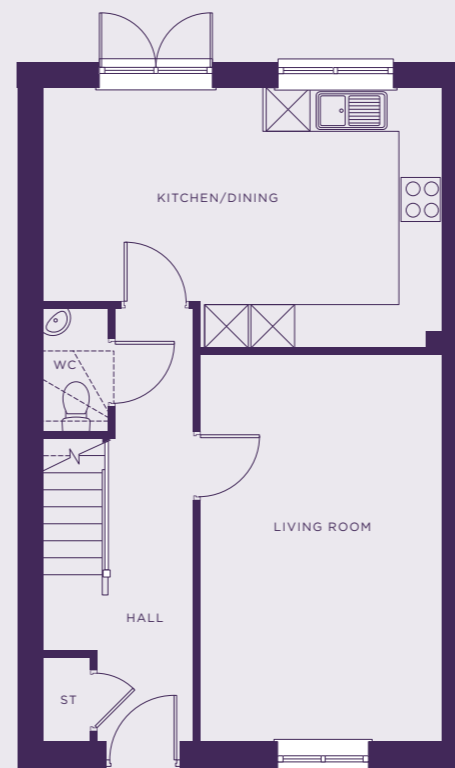


# THE MACARTHUR

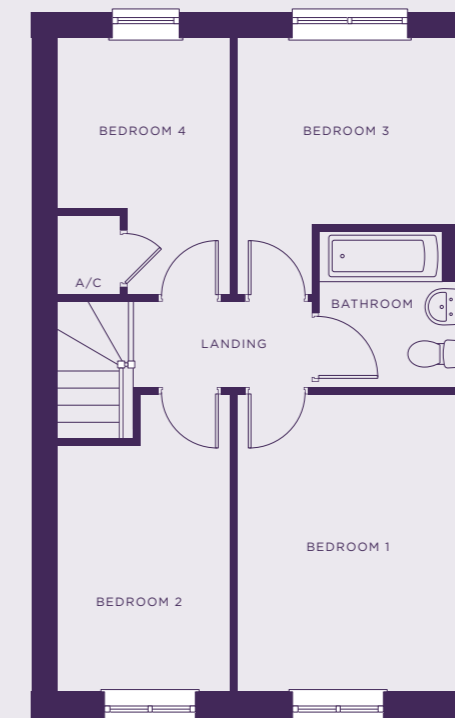
PLOTS 91, 94, 95, 146 & 157

TOTAL 1,066 SQ FT

GROUND



FIRST



## SPECIFICATION

### Kitchen

- Modern fitted kitchen
- Stainless steel integral oven, hob & extract hood
- Space for washing machine & fridge/freezer
- Vinyl flooring to kitchen and WC
- Open plan Kitchen/dining

### Bathroom

- Family bathroom
- Shower over bath
- Three piece white suite
- Complimentary wall tiling
- Vinyl flooring to bathroom

### General

- Located near popular towns including Shirebrook and Mansfield, not far from Nottingham.
- Excellent links to the A60
- 2 parking spaces per property
- 10 Year build warranty

<b>Kitchen / Dining</b>	17.84 m <sup>2</sup>	17'11" x 11'6"
<b>Living Room</b>	16.12 m <sup>2</sup>	17'5" x 10'9"
<b>Bedroom 1</b>	8.44 m <sup>2</sup>	10'9" x 9'1"
<b>Bedroom 2</b>	8.40 m <sup>2</sup>	10'9" x 9'1"
<b>Bedroom 3</b>	6.94 m <sup>2</sup>	11'7" x 6'11"
<b>Bedroom 4</b>	4.49 m <sup>2</sup>	7'6" x 6'11"

This image is from an imaginary viewpoint within an open space area. Its purpose is to give a feel for the development, not an accurate description of each property. The illustration shows a typical Platform Home Ownership home of this type, but there are, however, variances from site to site. External materials, finishes, landscaping, windows and the position of garages, (where provided) may vary throughout the development. Properties may also be built handed (mirror image). Please ask for further details.



THE BROOK

# THE BROOK

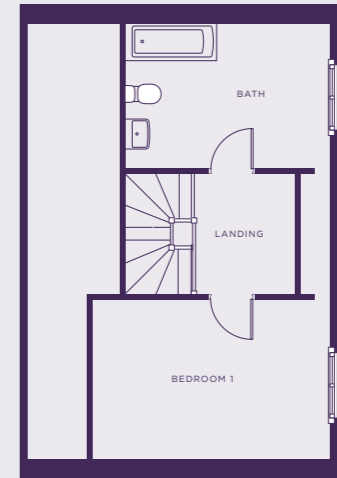
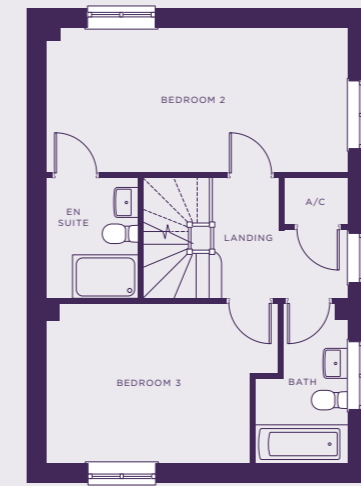
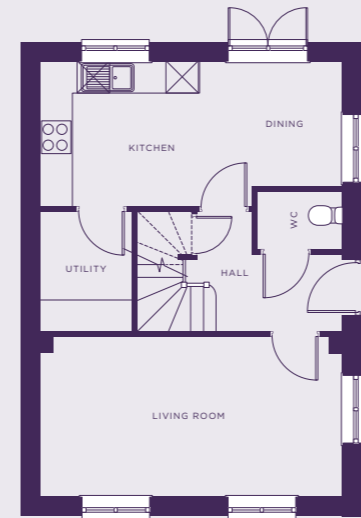
PLOTS 242

TOTAL 1,279 SQ FT

GROUND

FIRST

SECOND



## SPECIFICATION

### Kitchen

- Modern fitted kitchen
- Stainless steel integral oven, hob & extract hood
- Space for washing machine & fridge/freezer
- Vinyl flooring to kitchen and WC
- Open plan Kitchen/dining

### Bathroom

- Family bathroom
- Shower over bath
- Three piece white suite
- Complimentary wall tiling
- Vinyl flooring to bathroom

### General

- Located near popular towns including Shirebrook and Mansfield, not far from Nottingham.
- Excellent links to the A60
- 2 parking spaces per property
- 10 Year build warranty

<b>Kitchen / Dining</b>	15.5 m <sup>2</sup>	18'6" x 8'11"
<b>Living</b>	16.8 m <sup>2</sup>	18'6" x 9'9"
<b>Bedroom 2</b>	15.3 m <sup>2</sup>	18'6" x 8'11"
<b>Bedroom 3</b>	11.5 m <sup>2</sup>	12'8" x 9'9"
<b>Bedroom 1</b>	10.8 m <sup>2</sup>	11'10" x 9'8"

This image is from an imaginary viewpoint within an open space area. Its purpose is to give a feel for the development, not an accurate description of each property. The illustration shows a typical Platform Home Ownership home of this type, but there are, however, variances from site to site. External materials, finishes, landscaping, windows and the position of garages, (where provided) may vary throughout the development. Properties may also be built handed (mirror image). Please ask for further details.



THE WYATT II

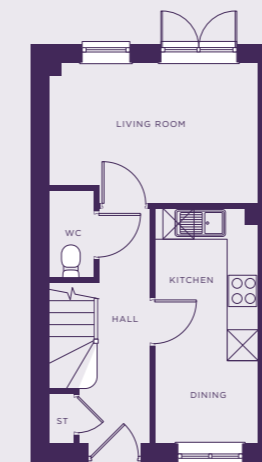
This image is from an imaginary viewpoint within an open space area. Its purpose is to give a feel for the development, not an accurate description of each property. The illustration shows a typical Platform Home Ownership home of this type, but there are, however, variances from site to site. External materials, finishes, landscaping, windows and the position of garages, (where provided) may vary throughout the development. Properties may also be built handed (mirror image). Please ask for further details.

# THE WYATT II

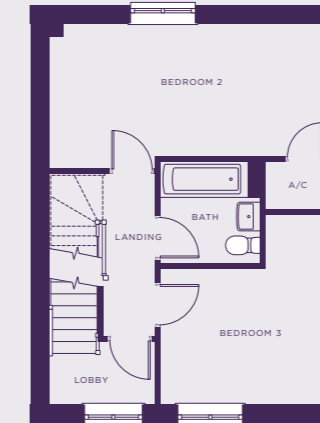
PLOTS 49

TOTAL 1,056 SQ FT

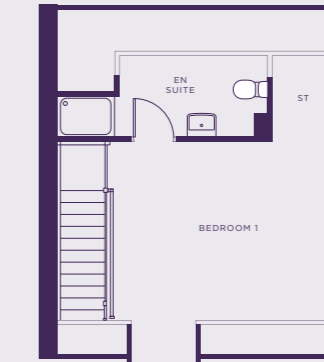
GROUND



FIRST



SECOND



## SPECIFICATION

### Kitchen

- Modern fitted kitchen
- Stainless steel integral oven, hob & extract hood
- Space for washing machine & fridge/freezer
- Vinyl flooring to kitchen and WC
- Open plan Kitchen/dining

### Bathroom

- Family bathroom
- Shower over bath
- Three piece white suite
- Complimentary wall tiling
- Vinyl flooring to bathroom

### General

- Located near popular towns including Shirebrook and Mansfield, not far from Nottingham.
- Excellent links to the A60
- 2 parking spaces per property
- 10 Year build warranty

<b>Kitchen / Dining</b>	9.52 m <sup>2</sup>	15'1" x 6'8"
<b>Living Room</b>	11.27 m <sup>2</sup>	13'5" x 9'1"
<b>Bedroom 1</b>	15.55 m <sup>2</sup>	14'8" x 11'4"
<b>Bedroom 2</b>	14.22 m <sup>2</sup>	17'10" x 8'6"
<b>Bedroom 3</b>	8.20 m <sup>2</sup>	10'9" x 8'9"





SHIREBROOK,  
MANSFIELD,  
NG20 8HZ



PLATFORMHOMEOWNERSHIP



@PLATFORMHOMEOWNERSHIP



@PLATFORMNEWHOME

GET IN TOUCH

0333 200 7304

[sales@platformhg.com](mailto:sales@platformhg.com)

SATNAV

NG20 8HZ

Platform Home Ownership have taken every effort to ensure that these documents are accurate and represent the properties available. Platform Home Ownership and the developer may in their efforts to improve design reserve the right to alter site plans, floorplans, elevations and specifications without prior notice. Maps shown are not to scaled and for illustrative purposes only. Distances are taken from [google.co.uk/maps](https://www.google.co.uk/maps). Information is correct at the time it was published - **February 2026**. For more information please visit us website at [www.platformhomeownership.com](http://www.platformhomeownership.com)