



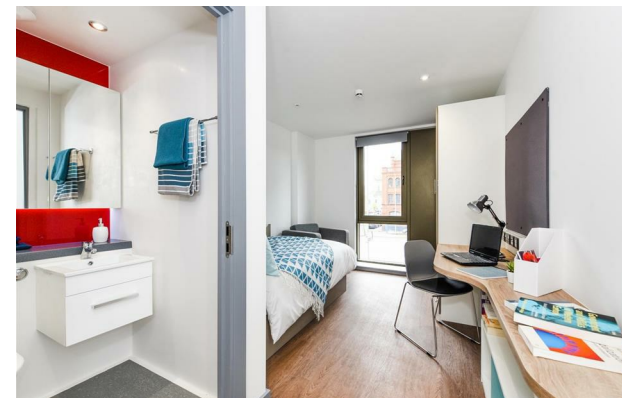
Great Patrick Street | | Belfast | BT1 2LT

£153 Per week



Great Patrick Street |
 Belfast | BT1 2LT
 £153 Per week

BELFAST | STUDENT | SEPTEMBER



- Social space, including cinema and disco kitchen!
- Study rooms
- High speed Wi-Fi
- Utilities including water and heating
- Strong community
- 24-hour gym
- Onsite laundry facilities
- Contents insurance
- Excellent location
- Student only

| Energy Efficiency Rating | | Current | Potential |
|--|--|----------------------------|-----------|
| <i>Very energy efficient - lower running costs</i> | | | |
| (92 plus) A | | | |
| (81-91) B | | | |
| (69-80) C | | | |
| (55-68) D | | | |
| (39-54) E | | | |
| (21-38) F | | | |
| (1-20) G | | | |
| <i>Not energy efficient - higher running costs</i> | | | |
| Northern Ireland | | EU Directive 2002/91/EC | |

Lower Ground Floor
 27 Ridley Place
 Newcastle upon Tyne
 Tyne and Wear
 NE1 8JN
 0191 6403450
 info@propertybynest.co.uk