



Annabel Court, 2A Hodford Road, NW11

A fabulous and fully interior designed, 2 bedroom, 2 bathroom (one en-suite) first floor apartment in this boutique development, situated in a premier position, just off The Finchley Road. Annabel Court is situated close to Golders Green Tube Station and to the shopping centres of Hampstead & Temple Fortune, along with easy access to Central London.

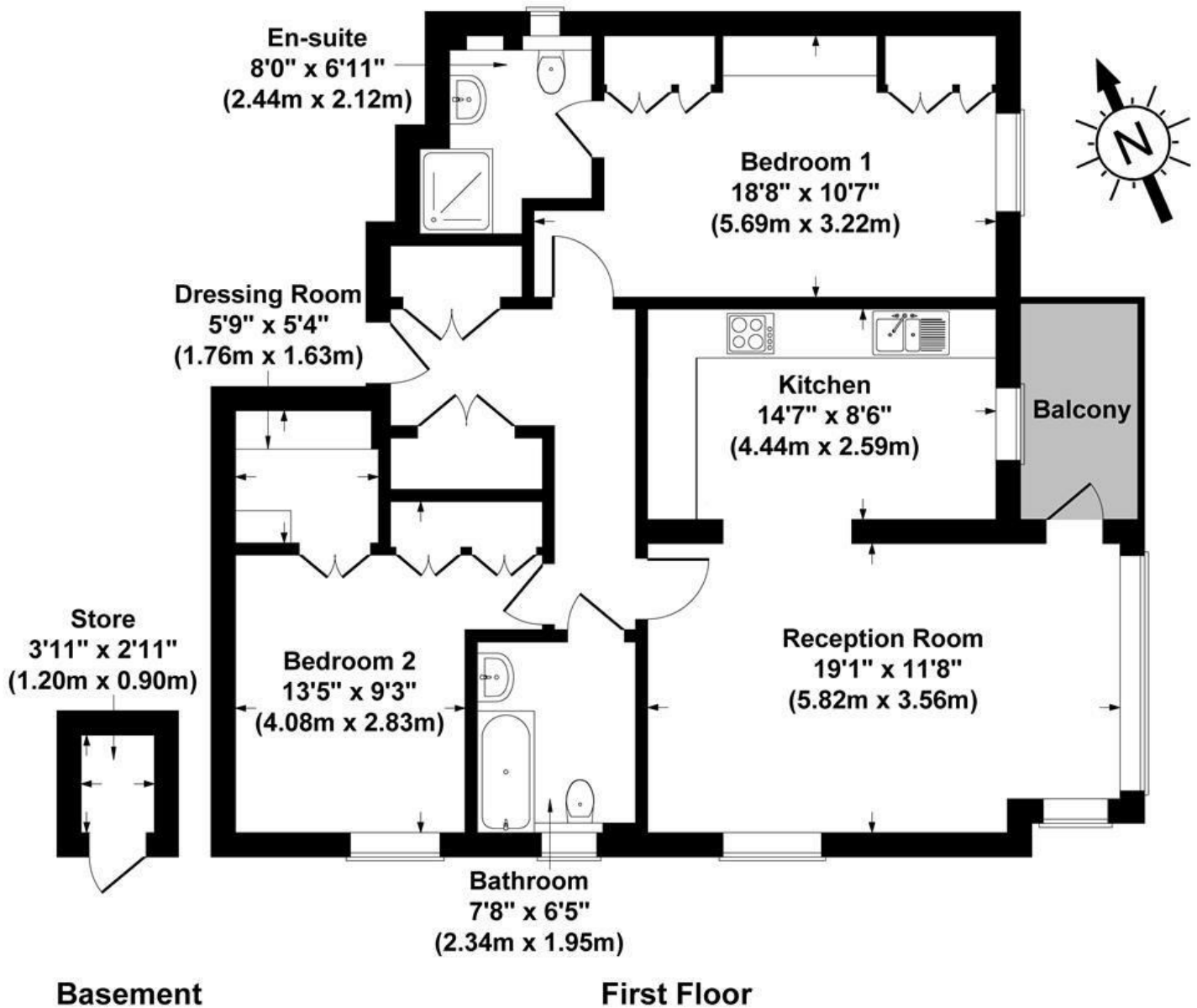
The apartment offers spacious accommodation comprising master bedroom with en-suite, second bedroom, family bathroom, large living area with access to balcony, kitchen, storage room & 1 underground parking space. There is a high-quality specification throughout, including comfort-cooling, underfloor heating, alarm, entry-phone system & lift from car park.

Early viewing is highly recommended.

£899,950

Annabel Court, Hodford Road, NW11 8NP

Gross Internal Area 947 sq ft /88 sq metres



All measurements of walls, doors, windows, fittings and appliances, including their size and location, are shown as standard sizes and therefore cannot be regarded as a representation by the seller.



Energy Efficiency Rating		
	Current	Potential
Very energy efficient - lower running costs		
(92 plus) A		
(81-91) B		
(69-80) C		
(55-68) D		
(39-54) E		
(21-38) F		
(1-20) G		
Not energy efficient - higher running costs		
England & Wales	EU Directive 2002/91/EC	

Environmental Impact (CO ₂) Rating		
	Current	Potential
Very environmentally friendly - lower CO ₂ emissions		
(92 plus) A		
(81-91) B		
(69-80) C		
(55-68) D		
(39-54) E		
(21-38) F		
(1-20) G		
Not environmentally friendly - higher CO ₂ emissions		
England & Wales	EU Directive 2002/91/EC	

