



## Wilton Road, N10

£1,700 Per calendar month

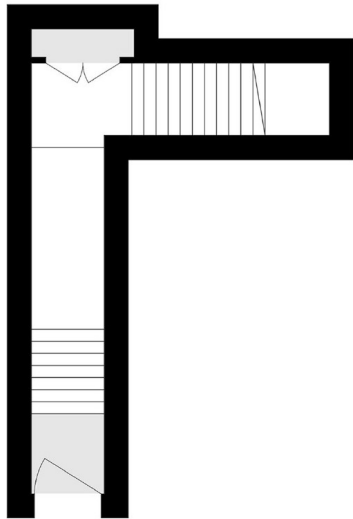
A well-presented one-bedroom flat with its own private entrance located in Muswell Hill. The property features a bright reception room with a private balcony, a separate modern kitchen, a contemporary bathroom, a spacious bedroom and ample storage throughout

Wilton Road is a quiet residential street located between Colney Hatch Lane and Coppetts Road, just a short walk from Muswell Hill Broadway, which offers a wide range of restaurants and excellent transport links into central London

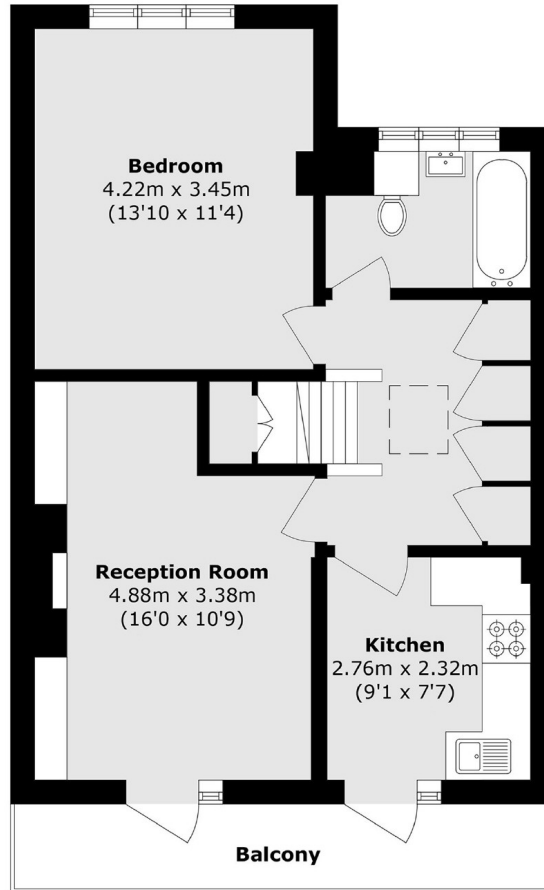
### Features

- One Double Bedroom
- Top Floor
- Private Entrance
- Modern Kitchen
- Bright Living Room With Balcony
- Muswell Hill

Wilton Road,  
London, N10



**Ground Floor**



**Second Floor**

Total area (approx.): 60.9 sq. m (655.5 sq. ft)  
Balcony area (approx.): 6.8 sq. m (73.2 sq. ft)