



Edith Road, W14

£600,000

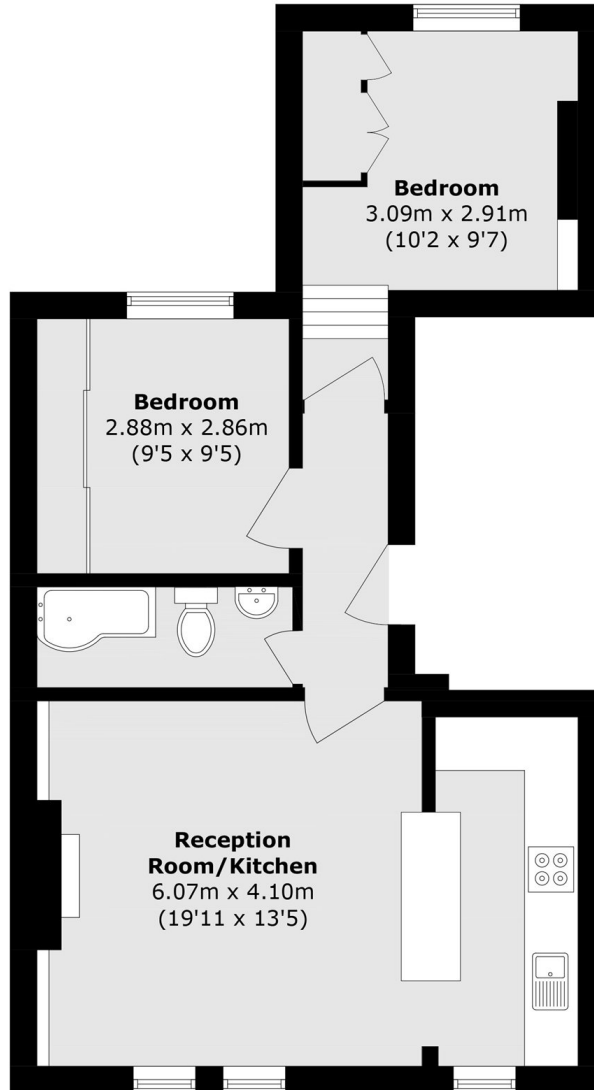
Offers In ExcessA bright and spacious two bedroom apartment situated on the first floor of a Victorian period building. The property has a large open plan living and kitchen area, modern bathroom and two double bedrooms.

Located in probably one of the best roads in West Kensington within two hundred yards to Barons Court underground station and the A4 for easy access into and out of Central London.

Features

- Share Of Freehold
- Two Bedrooms
- No Chain
- Great Location
- First Floor
- Close To Tubes

Edith Road, London, W14



Total area (approx.): 50.7 sq. m (545.7 sq. ft)