



34A Beach Road, Thornton Cleveleys, FY5 1EQ

£800 Per Month

- Two bedroomed refurbished apartment
- Modern new kitchen and bathroom
- Parking for one vehicle
- Close to beach
- Fully recarpeted and decorated
- Early viewing recommended

34A Beach Road, Thornton Cleveleys FY5 1EQ

Located on Beach Road in Thornton Cleveleys, this delightful first-floor apartment offers a perfect blend of comfort and convenience. Spanning an area of 552 square feet, the property features two well-proportioned bedrooms, making it an ideal choice for couples, small families, or those seeking a serene retreat by the sea.

Upon entering, you will be greeted by a spacious reception room that is both inviting and versatile, providing ample space for relaxation and entertaining. The apartment has been recently refurbished, showcasing new carpets and fresh decorations that enhance its modern appeal. This thoughtful renovation ensures that you can move in with ease, enjoying a fresh and contemporary living environment.

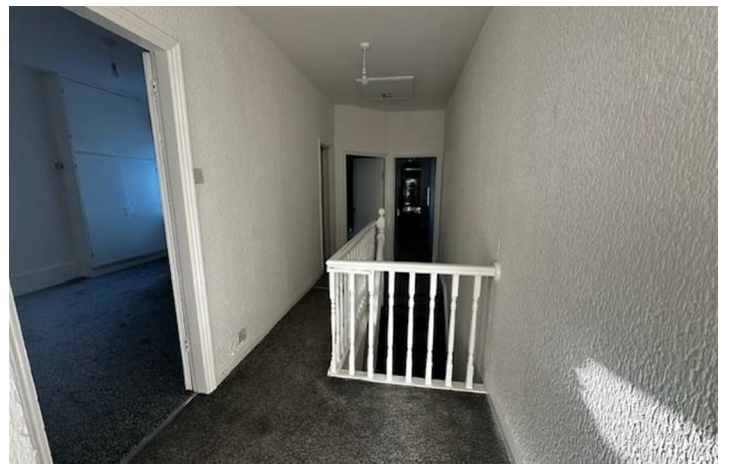
The property boasts a well-appointed bathroom, designed for both functionality and comfort. Additionally, the apartment benefits from parking for one vehicle, a valuable asset in this desirable location.

Situated close to the picturesque promenade, residents can enjoy leisurely strolls along the coast, as well as easy access to local amenities, including shops, cafes, and recreational facilities. This prime location not only offers a vibrant community atmosphere but also the tranquility of seaside living.

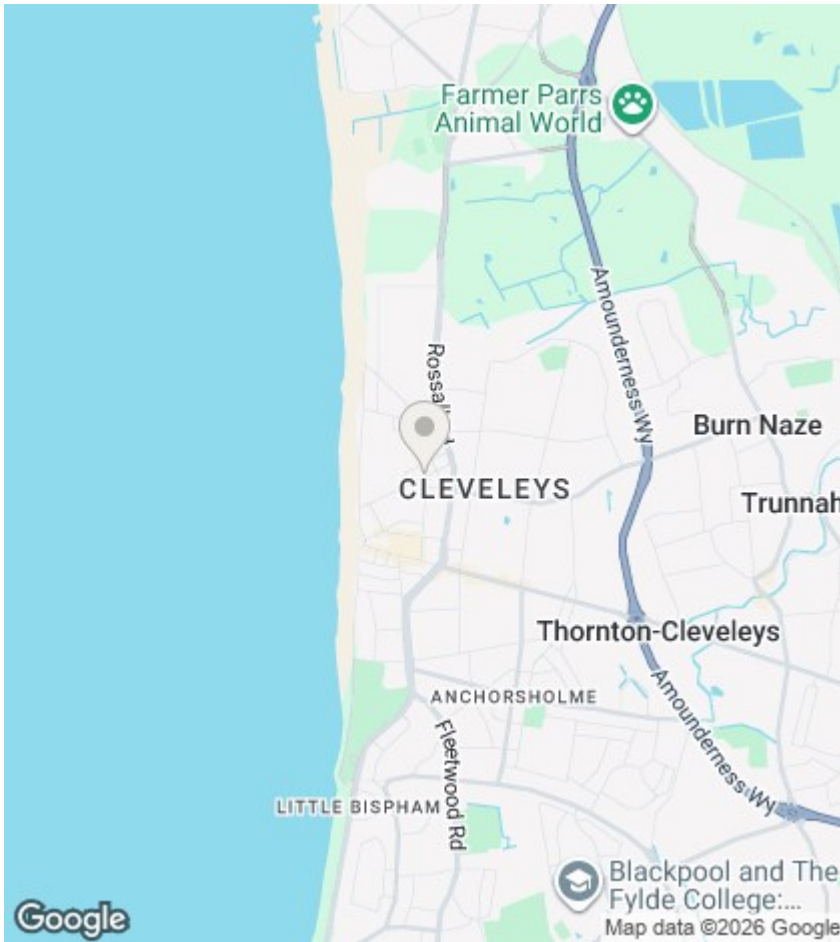
In summary, this two-bedroom apartment on Beach Road presents an excellent opportunity for those looking to embrace a coastal lifestyle in Thornton Cleveleys. With its recent refurbishment, convenient parking, and proximity to the beach, this property is sure to attract interest from a variety of renters. Do not miss the chance to make this charming flat your new home.



Council Tax Band: A







Directions

Viewings

Viewings by arrangement only. Call 01772 888 887 to make an appointment.

EPC Rating:

C

