



## Edith Row, SW6

£3,000 Per week

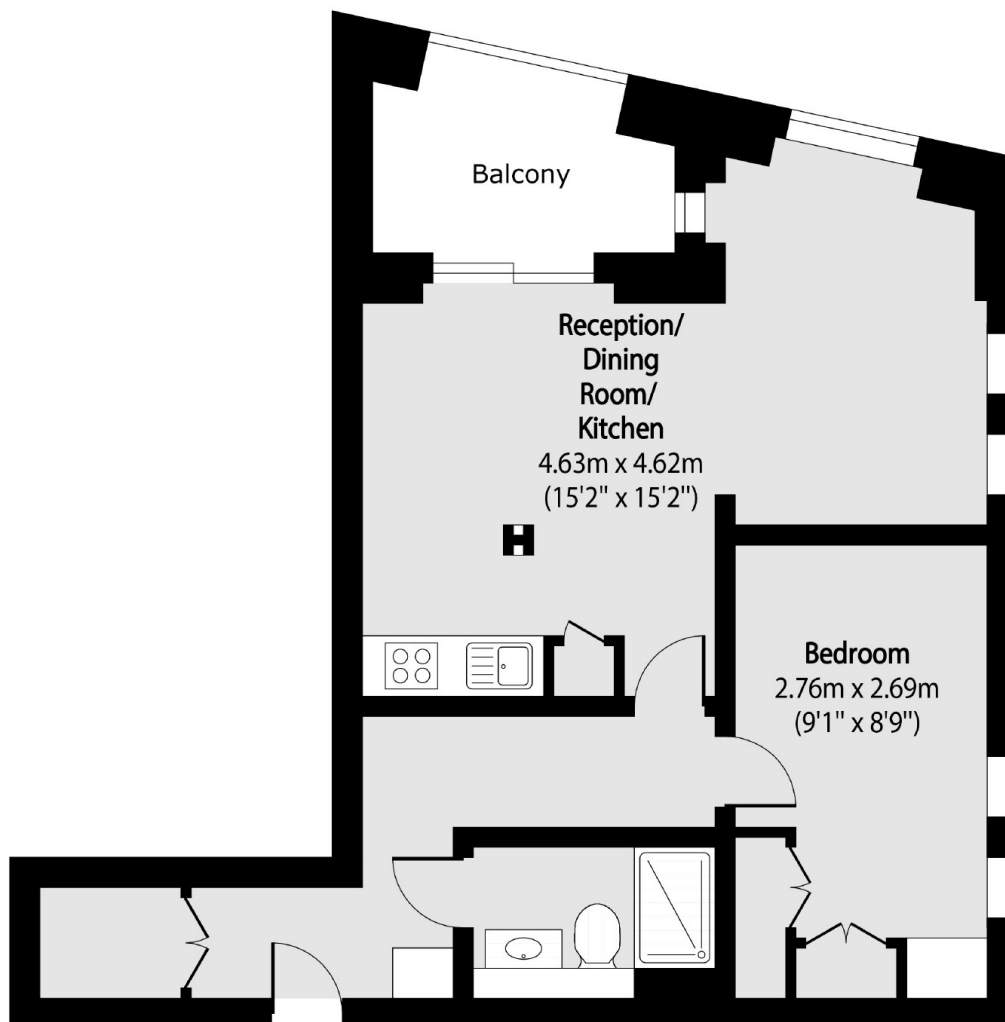
A modern one bedroom apartment, finished to an exceptional standard. This property has wooden flooring throughout with a built in storage and vanity area. It also has a balcony leading off of the open plan kitchen living room.

Edith Row is perfectly located off the popular Kings Road with the transport links of Fulham Broadway close by.

### Features

- One Bedroom
- Modern Interiors
- Wooden Flooring
- Built-in Storage
- Concierge
- Private Balcony

# Edith Row, London, SW6



Total area (approx): 50.31 sq m (542 sq. ft)

Balcony total area (approx): 5.16 sq m (56 sq. ft)