



East Hill

Tonsley Heights, SW18

£2,250 per month
(£519.23 per week)

A beautifully presented two double bedroom apartment set within a secure gated development on the sought-after East Hill, ideally positioned between Wandsworth Town and Wandsworth Common.

CHESTERTONS



East Hill

Tonsley Heights, SW18

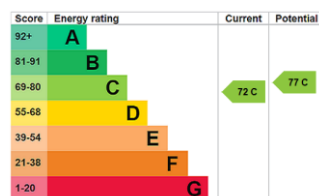
- Two Double Bedrooms
- Very Short Walk to Wandsworth Town Station
- Allocated parking included



A beautifully presented two double bedroom apartment set within a secure gated development on the sought-after East Hill, ideally positioned between Wandsworth Town and Wandsworth Common.

The property has been recently refurbished throughout and offers a bright and spacious reception room with excellent space for both living and dining, a separate fully fitted kitchen, two well-proportioned double bedrooms and a modern bathroom complete with a power shower over bath. Large double glazed windows flood the apartment with natural light, while the newly installed electric heating system further enhances the comfort and efficiency of the home.

Minimum Term: 12 months
Deposit Required: £2,596.15
Local Authority: Wandsworth Council
Council Tax Band: D
EPC Rating: C
Unfurnished



Chestertons Wandsworth Town Lettings

47 East Hill
 London
 SW18 2QE
 wandsworthlettingsusers@chestertons.co.uk
 02081047540
 chestertons.co.uk

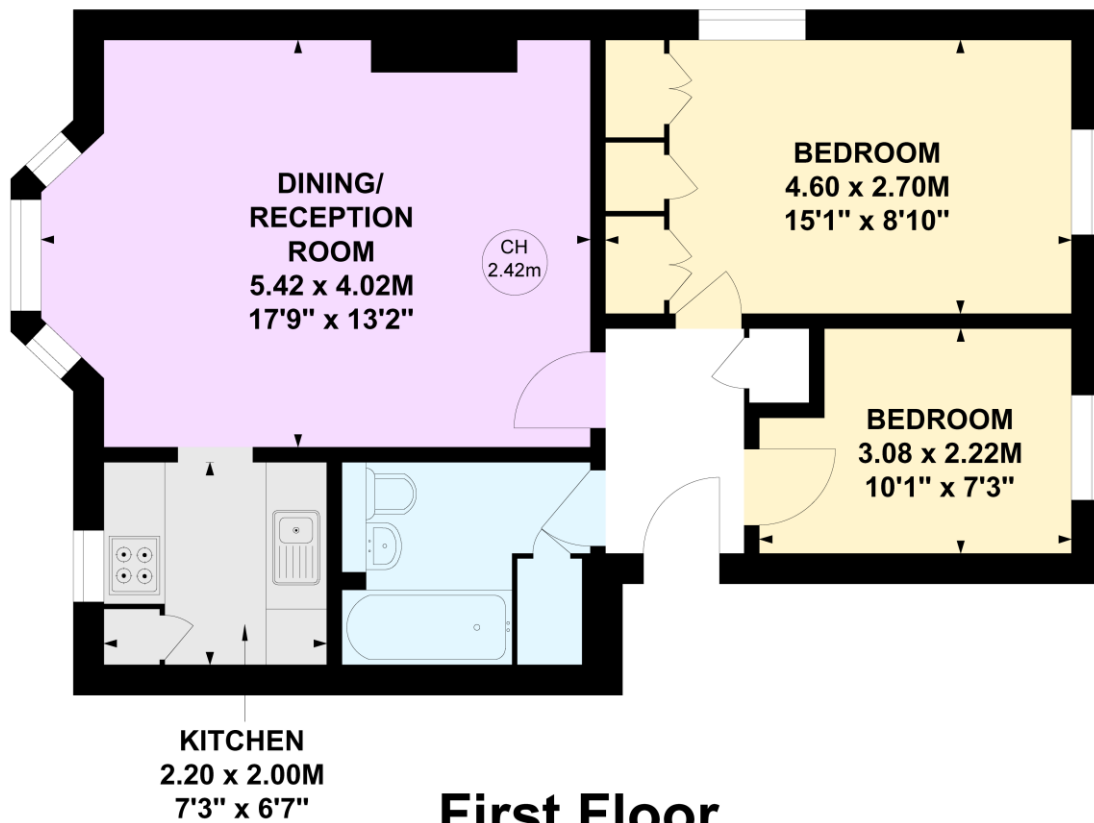
Additional tenant charges apply (fees apply to non-AST tenancies only)
 Tenancy Agreement Fee: £300
 References per Tenant/Guarantor: £60
 Inventory check (approx. £100 – £250 inc. VAT)
 chestertons.co.uk/property-to-rent/applicable-fees

Tonsley Heights, SW18

Approximate gross internal area

54.74 sq m / 589 sq ft

Key :
CH - Ceiling Height



Not to scale, for guidance only and must not be relied upon as a statement of fact.
All measurements and areas are approximate only