

Situated within easy reach of Wallisdean Junior School, Fareham Academy and Fareham's mainline train station, this extended well presented three bedroom family home has off road parking for several vehicles, two reception rooms, sun lounge and garage.

- Three Bedroom Family Home
- Two Reception Rooms
- Extended 18 Foot Kitchen
- Sun Lounge
- Bathroom
- Gas Central Heating and Double glazing
- Driveway for Parking
- Garage
- Enclosed Rear Garden
- Excellent Location Close to Wallisdean Junior School, Fareham Academy, mainline train station and Fareham town centre

The Accommodation Comprises:-
Front door into:

Entrance Hall:-

Stairs to first floor, radiator, picture rail, dado rail, under-stairs recess with cloak hanging space.

Lounge:- 15' 7" x 12' 3" (4.75m x 3.73m) Maximum Measurements
Double glazed bay window to front elevation. dado rail, radiator, fireplace.

Kitchen:- 18' 1" x 7' (5.51m x 2.13m)
Double glazed window to rear elevation, range of base and eye level units with work surfaces, sink unit, radiator, oven, integrated dishwasher, space for: washing machine, fridge, freezer.

Dining Room:- 10' 7" x 9' 9" (3.22m x 2.97m)
Radiator, picture rail, double glazed sliding door giving access to:

Sun Lounge:- 10' 3" x 9' (3.12m x 2.74m)
Double glazed French doors with panels to side giving access to rear garden, polycarbonate ceiling.

First Floor Landing:-
Access to loft.

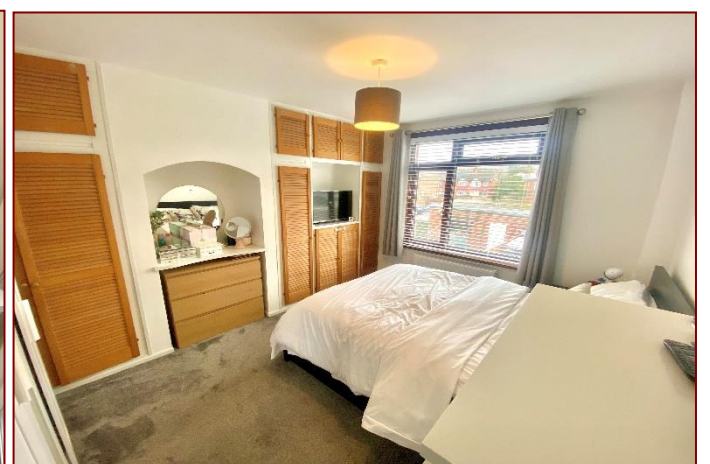
Bedroom 1:- 13' 1" x 9' 6" to fitted wardrobes (3.98m x 2.89m)
Double glazed window to rear elevation, radiator, fitted wardrobe units.

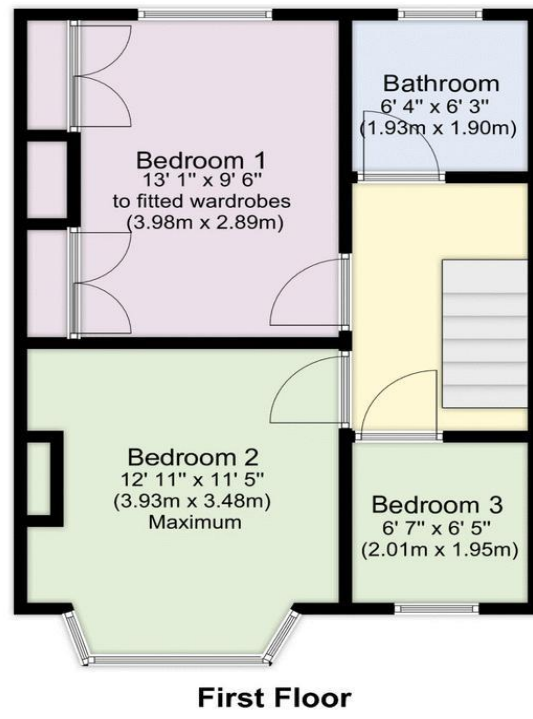
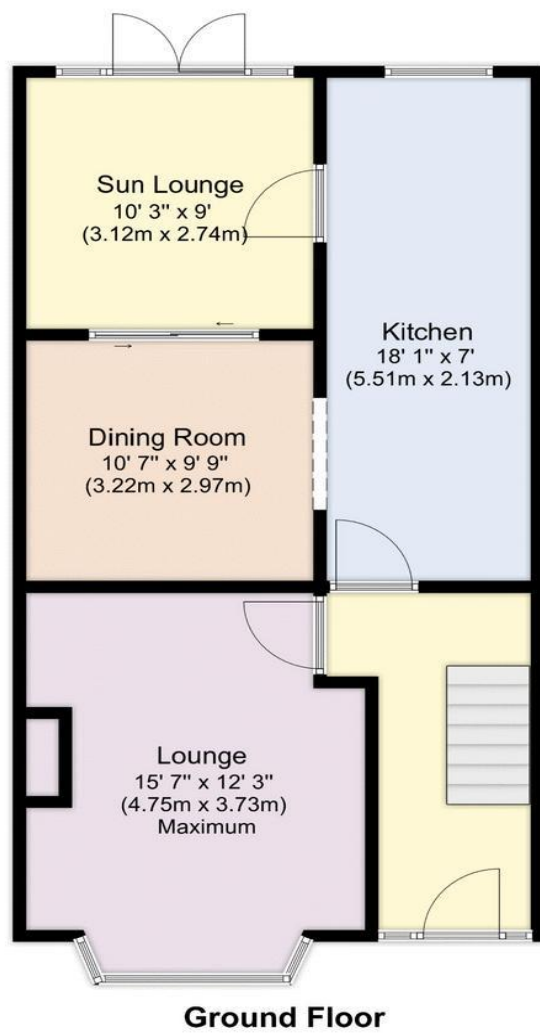
Bedroom 2:- 12' 11" x 11' 5" (3.93m x 3.48m) Maximum Measurements
Double glazed bay window to front elevation, radiator.

Bedroom 3:- 6' 7" x 6' 5" (2.01m x 1.95m)
Double glazed window to front elevation, radiator.

Bathroom:- 6' 4" x 6' 3" (1.93m x 1.90m)
Double glazed window to rear elevation, tiled, close coupled WC, wash hand basin, bath with shower over, screen, extractor fan, chrome heated towel rail.

Outside:-
Driveway to the front for parking. Rear enclosed garden bordered by fence panels, garage with window, courtesy door and up and over door accessed via service road.





Score	Energy rating	Current	Potential
92+	A		
81-91	B		86 B
69-80	C	71 C	
55-68	D		
39-54	E		
21-38	F		
1-20	G		

Disclaimer: These particulars are set out as a general outline in accordance with the Consumer Protection from Unfair Trading Regulations 2008 (CPR's) and Business Protection from Misleading Marketing Regulations 2008 (BPR's) only for the guidance of intending purchasers or lessees, and do not constitute any part of an offer or contract. Details are given without any responsibility, and any intending purchasers, lessees or third parties should not rely on them as statements or representations of fact, but must satisfy themselves by inspection or otherwise as to the correctness of each of them.

We have not carried out a structural survey and the services, appliances and specific fittings have not been tested. All photographs, measurements, floor plans and distances referred to are given as a guide only and should not be relied upon for the purchase of carpets or any other fixtures or fittings. Gardens, roof terraces, balconies and communal gardens as well as tenure and lease details cannot have their accuracy guaranteed for intending purchasers. Lease details, service ground rent (where applicable) are given as a guide only and should be checked and confirmed by your solicitor prior to exchange of contracts.

No person in the employment of Fenwicks Estates Ltd has any authority to make any representation or warranty whatever in relation to this property. Purchase prices, rents or other prices quoted are correct at the date of publication and, unless otherwise stated, exclusive of VAT.

Data Protection: We retain the copyright in all advertising material used to market this Property.

Money Laundering Regulations 2017: Intending purchasers will be required to produce identification documentation once an offer is accepted.



Offers in Excess of £365,000
9 Westley Grove, Fareham, PO14 1HW

Fenwicks - Fareham Office: 01329 285 500 www.fenwicks-estates.co.uk

Fenwicks
THE INDEPENDENT ESTATE AGENT