



SELLINCOURT ROAD, SW17

£500,000

- Long Lease
- Chain Free
- First Floor Flat
- Private Garden
- Maisonette
- EPC Rating C





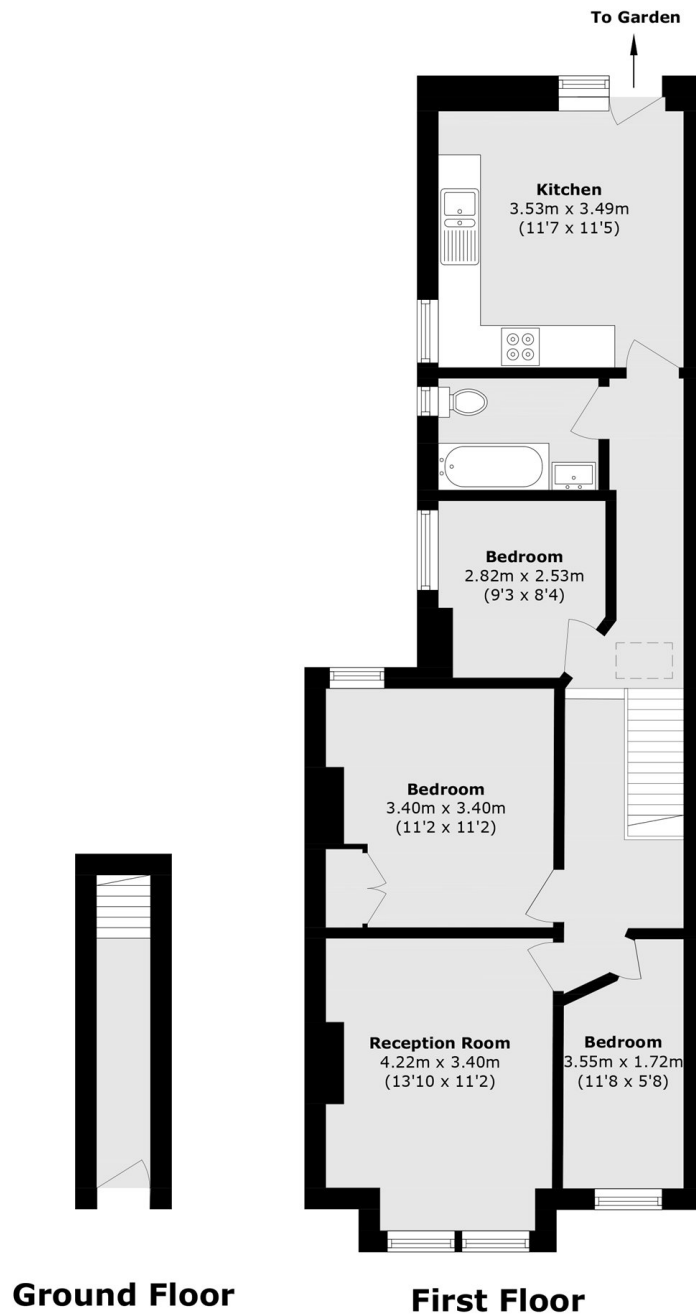
ABOUT THE HOME

An impressive and generously proportioned three bedroom first floor period maisonette, offered with a lease in excess of 160 years. This charming residence boasts three well-appointed bedrooms, an elegant front reception room, and a spacious kitchen to the rear providing direct access to a private garden. Further benefits include a contemporary fitted bathroom, making this an ideal home for families or professionals alike.

Located on a popular road in Tooting, this property is well situated for easy access to an array of shops, bars and restaurants on offer. The wide open spaces of Tooting Bec Common are also close by, as are the excellent transport links including Tooting Station and Tooting Broadway Underground Station.







Total area (approx.): 70.2 sq. m (755.6 sq. ft)

JACKSONS TOOTING

3 Upper Tooting Road, London,
SW17 7TS
Sales: 020 8487 3175
Lettings: 020 8487 3176

Energy Rating: We aim to make our particulars both accurate and reliable. However they are not guaranteed; nor do they form part of an offer or contract. If you require clarification on any points then please contact us, especially if you're traveling some distance to view. Please note that appliances and heating systems have not been tested and therefore no warranties can be given as to their good working order.