

tavistockbow

For Rent



People Make Places



Ganton Street, Carnaby W1

2 bedrooms | 926 sq ft

£1,600 pw

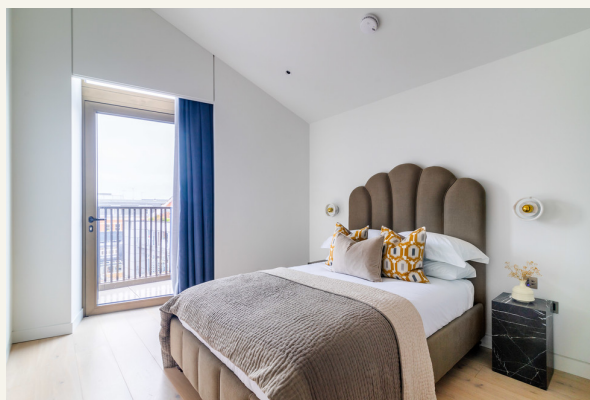




Penthouse living in this two bedroom, two bathroom fully furnished loft-style, perfectly positioned in the heart of London's West End. Featuring a private terrace with sublime London views, a weekday concierge and finished to an exceptional standard. Available furnished early March.

What you need to know

- Two double bedrooms
- Two bathrooms
- Private terrace with fantastic views
- Soho Home furniture
- Communal roof garden
- Furnished
- Available early March
- 5th floor with lift access
- Day time porter
- Inclusive internet (G Network)



Ganton Street, Carnaby W1



Overview

Located in Carnaby Lofts, this exquisite apartment offers a blend of luxury and style, featuring a spacious private terrace and panoramic rooftop views. The apartment is beautifully designed with high-pitched ceilings and a large, open-plan kitchen/reception area perfect for entertaining. Both bedrooms offer ample built-in storage, the bathrooms are finished to a superb standard and the space has been meticulously furnished and interior-designed by Soho Home, providing a sleek, modern living space. Additional amenities include access to a pretty communal roof terrace, a daytime concierge and inclusive high-speed internet (G Network).

The penthouses at Carnaby Lofts are set above an office building overlooking Carnaby, an enclave of only 14 streets in the north west corner of Soho. The foodies paradise of Kingly Court is just a few minutes walk away, while bus services can be reached via nearby Oxford and Regents Streets. Underground services are available at nearby Oxford Circus (Bakerloo, Central and Victoria Lines) for travel within London and to connect to the Elizabeth Line for services to Canary Wharf and Heathrow.

The apartment is available early March on a furnished basis. Subject to contract and satisfactory references, the landlord offers a three-year lease with a mutual rolling six-month break clause. Westminster City Council tax band: G.

Ganton Street, Carnaby W1



People Make Places

London is a collection of inspiring urban villages and one of the most exciting places in the world to live, work & play.

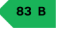

We work with both property owners and their occupiers, sharing the story of these vibrant neighbourhoods, conveying the unique soul & energy to future custodians, the people who'll keep them buzzing.

And unlike many real estate businesses we're not just about buildings, because streets & buildings don't make a neighbourhood.

We're about building relationships, because **people make places**.

MISINTERPRETATION ACT (COPYRIGHT) DISCLAIMER: Tavistock Bow Ltd for themselves and for the vendor(s) of this property whose agents they are, given notice that: 1. These particulars do not constitute, not constitute any part of, an offer or contract. 2. None of the statements contained in these particulars as to the property are to be relied on as statements or representations of fact. 3. Any intending purchaser or lessee must satisfy themselves by inspection or otherwise as to the correctness of each of the statements contained in these particulars. 4. The vendor(s) or lessor(s) do not make or give and neither Tavistock Bow Ltd nor any person in their employment has any authority to make or give any representation or warranty whatever in relation to this property. Finance Act 1989, Unless otherwise stated all prices and rents are quote exclusive of VAT. Property Misrepresentation Act 1991; These details are believed to be correct at the time of compilation but may be subject to subsequent amendment.

Follow us:     @tavistockbow

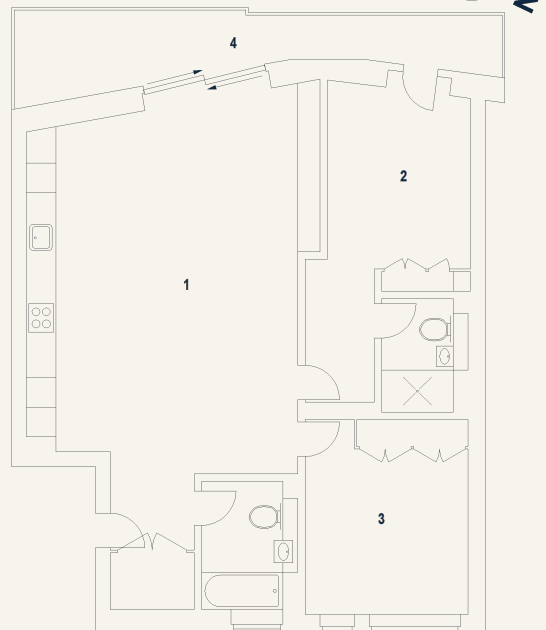
Score	Energy rating	Current	Potential
92+	A		
81-91	B	 83 B	 83 B
69-80	C		
55-68	D		
39-54	E		
21-38	F		
1-20	G		

Ganton Street, W1

Approximate Gross Internal Area 90 sq m / 968 sq ft

Fifth Floor

- 1 Kitchen / Reception Room
7.89 x 5.94M
25'11" x 19'6"
- 2 Bedroom
3.44 x 2.91M
11'4" x 9'7"
- 3 Bedroom
4.21 x 3.35M
13'10" x 11'
- 4 Terrace



Floor Plan produced for Tavistock Bow by Mays Floorplans ©. Tel 020 3397 4594
Illustration for identification purposes only, not to scale.

tavistockbow

21 New Row, Covent Garden,
London, WC2N 4LE

t: 020 7477 2177
e: hello@tavistockbow.com
w: tavistockbow.com



Ganton Street, Carnaby W1