



**Guide Price**  
**£290,000**

**Freehold**

4x  1x  1x 

**Chatham Grove,  
Chatham, Kent, ME4**

**OVER 60?**

Secure this property  
for up to **59% less!**

*Wards*  
Helping you move forwards



## Main features

- End of terrace town house set over 3 floors
- Fantastic versatile living depending on needs
- Private rear garden and outside green spaces
- Perfect for young families needing more space to grow
- Ideal location due to highly regarded schools, local amenities and transport links

## Accommodation

### GROUND FLOOR

Entrance Hallway  
Lounge/Diner: 15'3 x 14'9 (4.65m x 4.50m)  
Kitchen: 10'2 x 8'3 (3.10m x 2.52m)

### FIRST FLOOR

Landing  
Bedroom 3: 9'0 x 8'4 (2.75m x 2.54m)  
Bedroom 4: 9'2 x 8'4 (2.80m x 2.54m)  
Cloakroom: 7'2 x 3'2 (2.19m x 0.97m)

### SECOND FLOOR

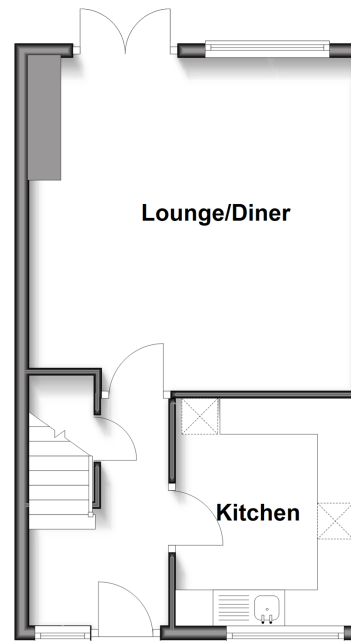
Bedroom 1: 11'6 x 10'9 (3.51m x 3.28m)  
Bedroom 2: 11'3 x 10'2 (3.43m x 3.10m)  
Bathroom: 6'3 x 6'1 (1.91m x 1.86m)

### OUTSIDE

Front Garden  
Rear Garden

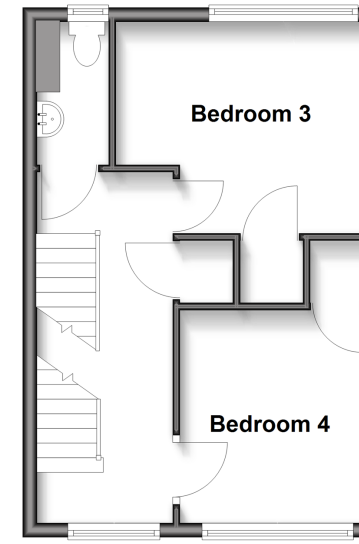
### Ground Floor

Approx. 35.8 sq. metres (385.2 sq. feet)



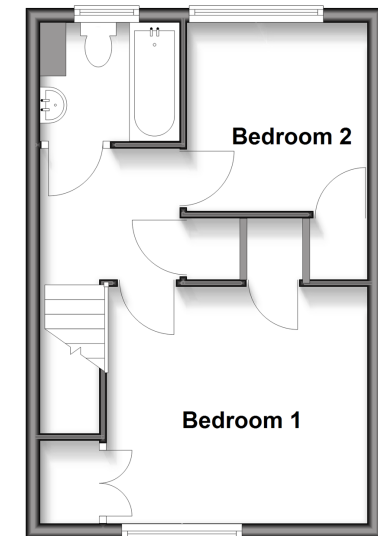
### First Floor

Approx. 32.0 sq. metres (344.0 sq. feet)



### Second Floor

Approx. 32.0 sq. metres (344.0 sq. feet)



Call Chatham - 01634 841243 ■ [wardsokent.co.uk](http://wardsokent.co.uk)

■ Through a Homewise Home For Life Plan people aged 60+ can secure this property for up to 59% less, by purchasing a Lifetime Lease



10430801/20260402/RC/RC