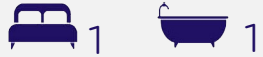




Postern Close
, York
YO23 1JD

£240,000



This beautifully refurbished ground floor apartment offers modern, comfortable living just a short distance from York city centre and the railway station. Perfectly suited for first-time buyers, investors, or those seeking a move-in-ready property.

The property includes an entrance hallway with a convenient built-in storage cupboard, leading to a bright and spacious lounge/diner with doors opening to a private patio area and communal garden, perfect for outdoor relaxation. The modern kitchen features sleek fitted units and integrated appliances.

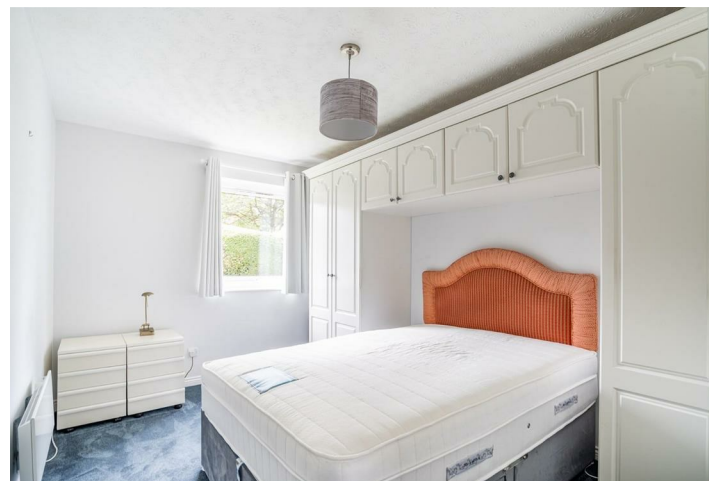
The generously sized double bedroom benefits from built-in wardrobes, offering plenty of storage, while the bathroom is fitted with a contemporary three-piece suite, including a shower over the bath.

Additional features include electric heating, double glazing throughout, and an allocated parking space for added convenience.

Leasehold
Length of lease- 999 year lease commenced in 1988.

Ground rent £0 per annum
Service charge £1,344 per annum

Council Tax Band- C



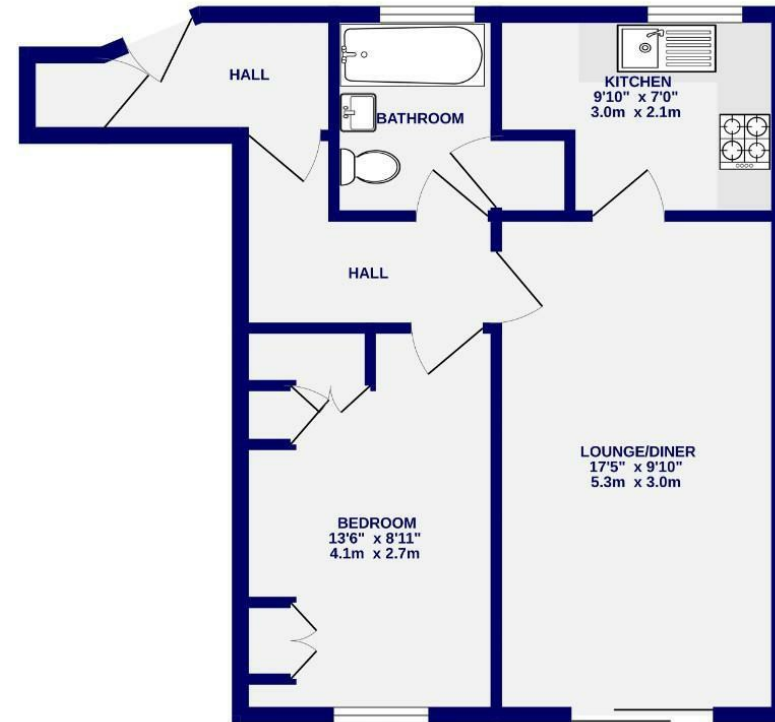


Postern Close , York YO23 1JD

Leasehold
Council Tax Band - C

- Ground Floor
- One Bedroom
- Apartment
- Close To York City Centre
- Allocated Parking
- Close To Bishopthorpe Road
- EPC D

GROUND FLOOR
483 sq.ft. (44.9 sq.m.) approx.



TOTAL FLOOR AREA - 483 sq.ft. (44.9 sq.m.) approx.
Whilst every attempt has been made to ensure the accuracy of the floorplan, measurements of rooms and any other items are approximate. It is included in the plan the gauger's notes will form part of the overall floor area and no responsibility is taken for any error, omission or mis-statement. This plan is for illustrative purposes only and should be used as such by any prospective purchaser. The services, systems and appliances shown have not been tested and no guarantee is given as to their operability.
Made with Metapex ©2025

These particulars have been prepared as accurately and as reliably as possible, but should not be relied upon as 'statement of fact'. If there is any point which is of particular importance to you, please contact the office and we would be pleased to check the information. We have not tested any services, appliances, equipment or facilities and nothing in these particulars should be deemed to be a statement that they are in good working order, or that the property is in good structural condition or otherwise. Any areas, measurements, floor plans or distances referred to are given as a guide only and are not precise. Purchasers must satisfy themselves by inspection or by otherwise regarding the items mentioned above and as to the correctness of each of the statements contained in these particulars. No person in the employment of Ashtons has any authority to make or give any representation or warranty whatsoever in relation to this property or these particulars nor enter into any contract relating to the property on behalf of the vendor. Please note that some images may have been edited with the use of AI. We are legally required to carry out AML checks for all purchasers, sellers and giftors, which become mandatory once an offer has been accepted. There is a non-refundable fee of £30 + VAT per purchaser and per giftor for these checks.