

9 The Drummonds

Epping, CM16

A wonderful three double bedroom family home available TO LET. Sat in the very heart of Epping, moments from Epping's high street and tube station, The Drummonds is a great spot to be
Council Tax band: E

Tenure: Freehold

- Three double bedrooms
- Driveway
- Ground floor WC
- Balcony to primary bedroom
- Beautiful established garden
- Short walk to Epping station & high street



Entrance lobby

WC

Lounge

18' 1" x 17' 5" (5.50m x 5.32m)

Dining Room

11' 9" x 9' 11" (3.57m x 3.02m)

Kitchen / Breakfast Room

23' 6" x 7' 3" (7.16m x 2.20m)

Bedroom

15' 9" x 11' 2" (4.79m x 3.41m)

Bedroom

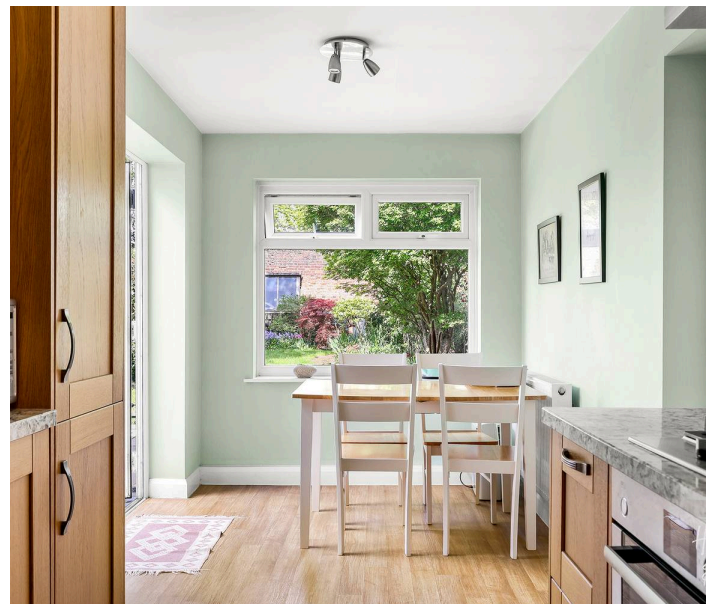
14' 7" x 9' 3" (4.45m x 2.83m)

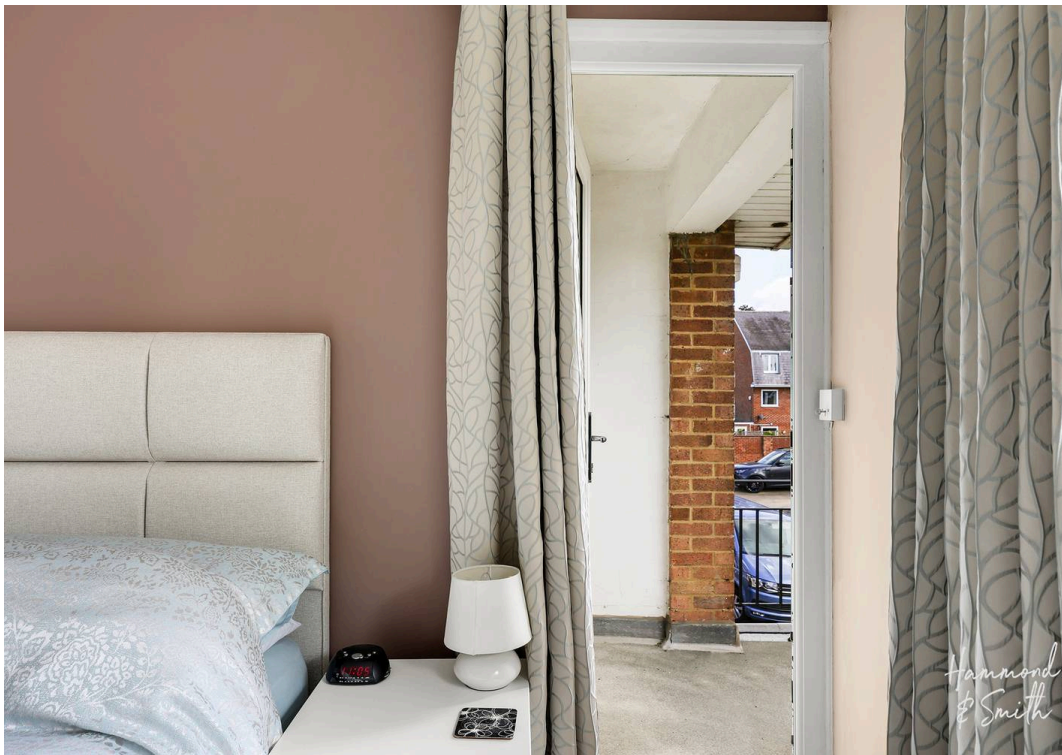
Bedroom

11' 11" x 8' 6" (3.64m x 2.58m)

Bathroom

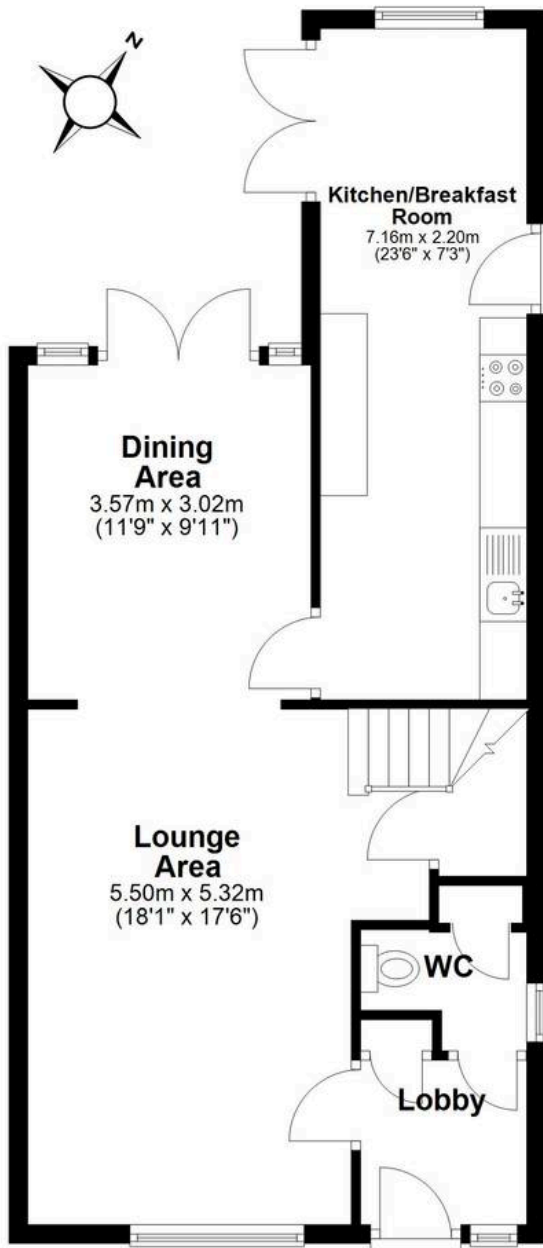
7' 11" x 6' 0" (2.42m x 1.82m)





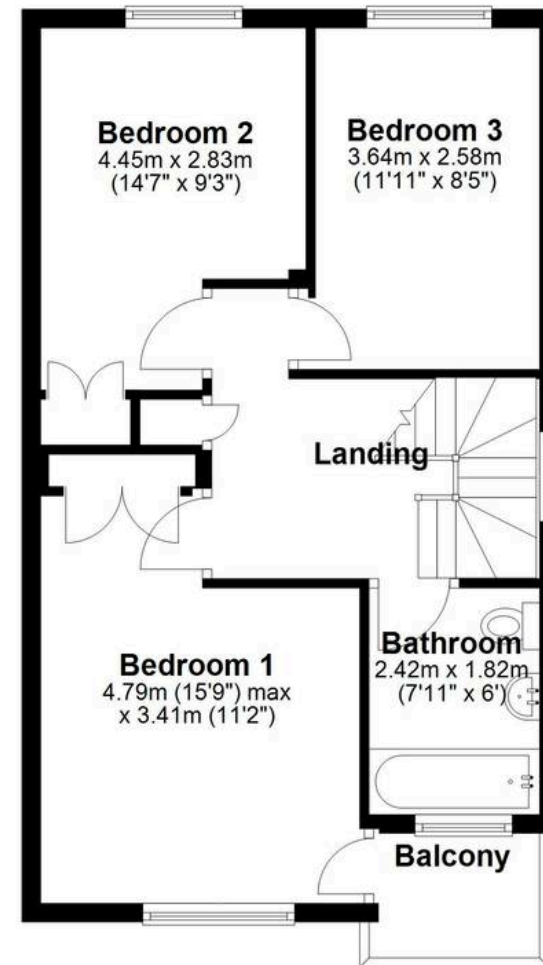
Ground Floor

Approx. 56.7 sq. metres (610.8 sq. feet)



First Floor

Approx. 48.9 sq. metres (526.2 sq. feet)
(excluding Balcony)



Total area: approx. 105.6 sq. metres (1137.0 sq. feet)