



Glendun Road, W3  
£1,350,000

**Dexters**

# Glendun Road, W3

This spectacular four bedroom house has been meticulously designed and no expense has been spared. Marble flooring, bespoke carpentry and air conditioning throughout are just some of the luxuries within.

Glendun Road is a wide tree lined residential road moments away from East Acton, Acton central and Poets Corner.

## Features

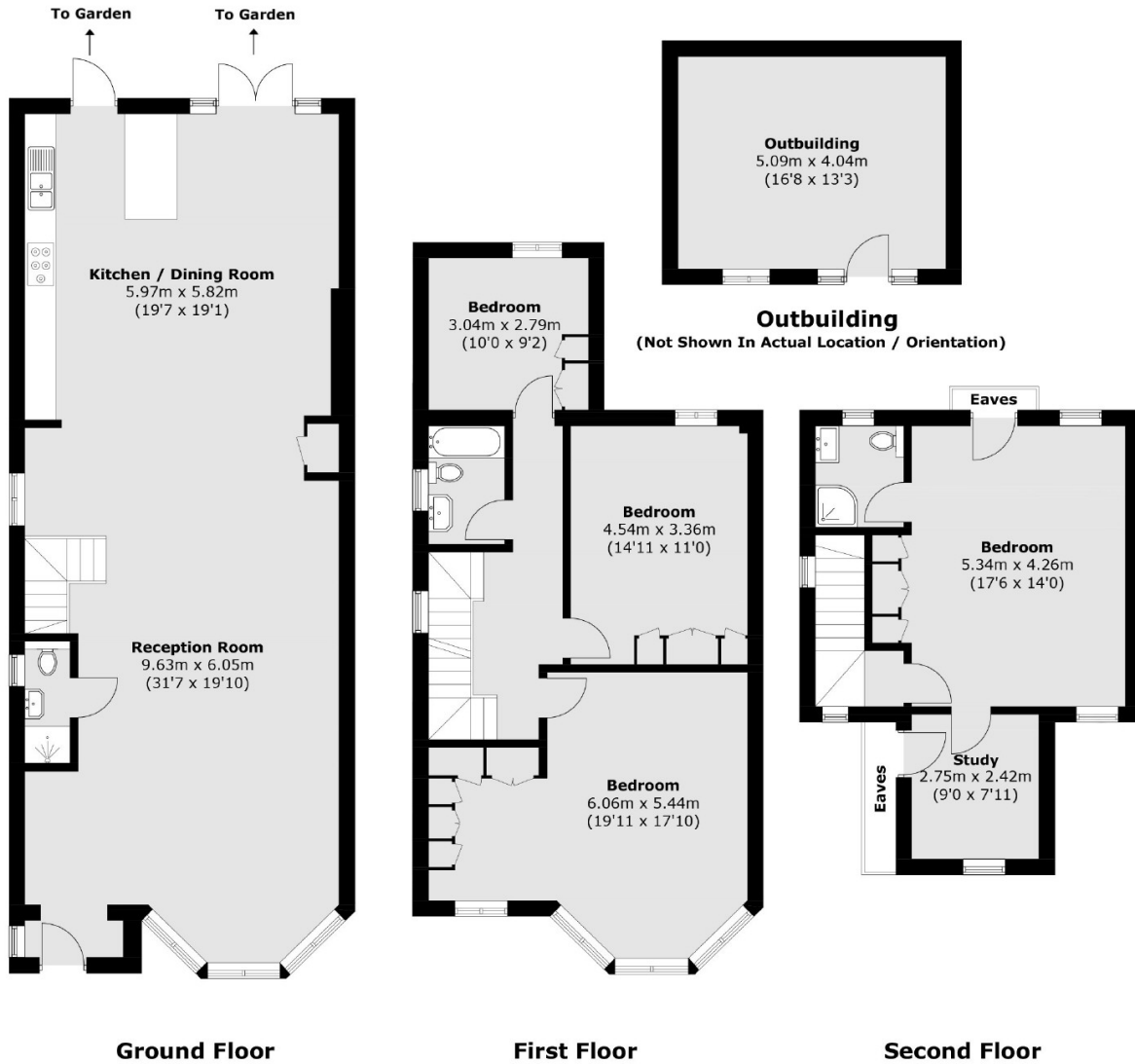
- Four Bedrooms
- Four En Suite Bathrooms
- Two Receptions
- Outbuilding
- Driveway Parking
- No Onward Chain







# Glendun Road, London, W3



Total area (approx.): 200.8 sq. m (2,161.4 sq. ft)  
(Excluding Eaves)

Outbuilding (approx.): 20.7 sq. m (222.8 sq. ft)