



# West Lodge

La Grande Route De St Ouen



# West Lodge, La Grande Route De St Ouen, St Ouen, JE3 2HR

Approached via a gated driveway and immersed in an idyllic, nature rich setting, this charming detached dormer bungalow is a rare opportunity for those seeking a wholesome lifestyle in harmony with the outdoors. Surrounded by mature oak and historic pine trees, with whimsical wisteria draping through the garden, this home offers a sense of peace and seclusion that is truly special. The property exudes character and comfort throughout, with multiple reception rooms, functional fireplaces, and a large sun room that seamlessly blends indoor and outdoor living. A recently installed modern kitchen with built in larder caters to both practicality and style, ideal for everyday living or entertaining. The ground floor features two generously sized double bedrooms, while the top floor boasts a grand double bedroom suite and a separate study/fourth bedroom. This upper space offers excellent potential to be transformed into a self-contained unit or luxury master suite. Spanning approximately 3,000 sq ft, the home is spacious yet holds further potential, with previously approved (now lapsed) planning permission for extension and enhancement.

The outside space is equally impressive, featuring large mature gardens with a pond and decked viewpoint, productive vegetable garden, paddock with animal shelters, currently housing goats, plus adjoining 3 vergee field creating a natural boundary and absolute privacy. Additional features include ample parking, a detached double garage with a home office above, and a separate hobby room (previous old dairy).

A rare find, combining rural charm, space, and scope for further development, all while offering a unique lifestyle immersed in nature.



Parish: St Ouen

Qualification: Qualified

Tenure: Freehold

Price £1,850,000



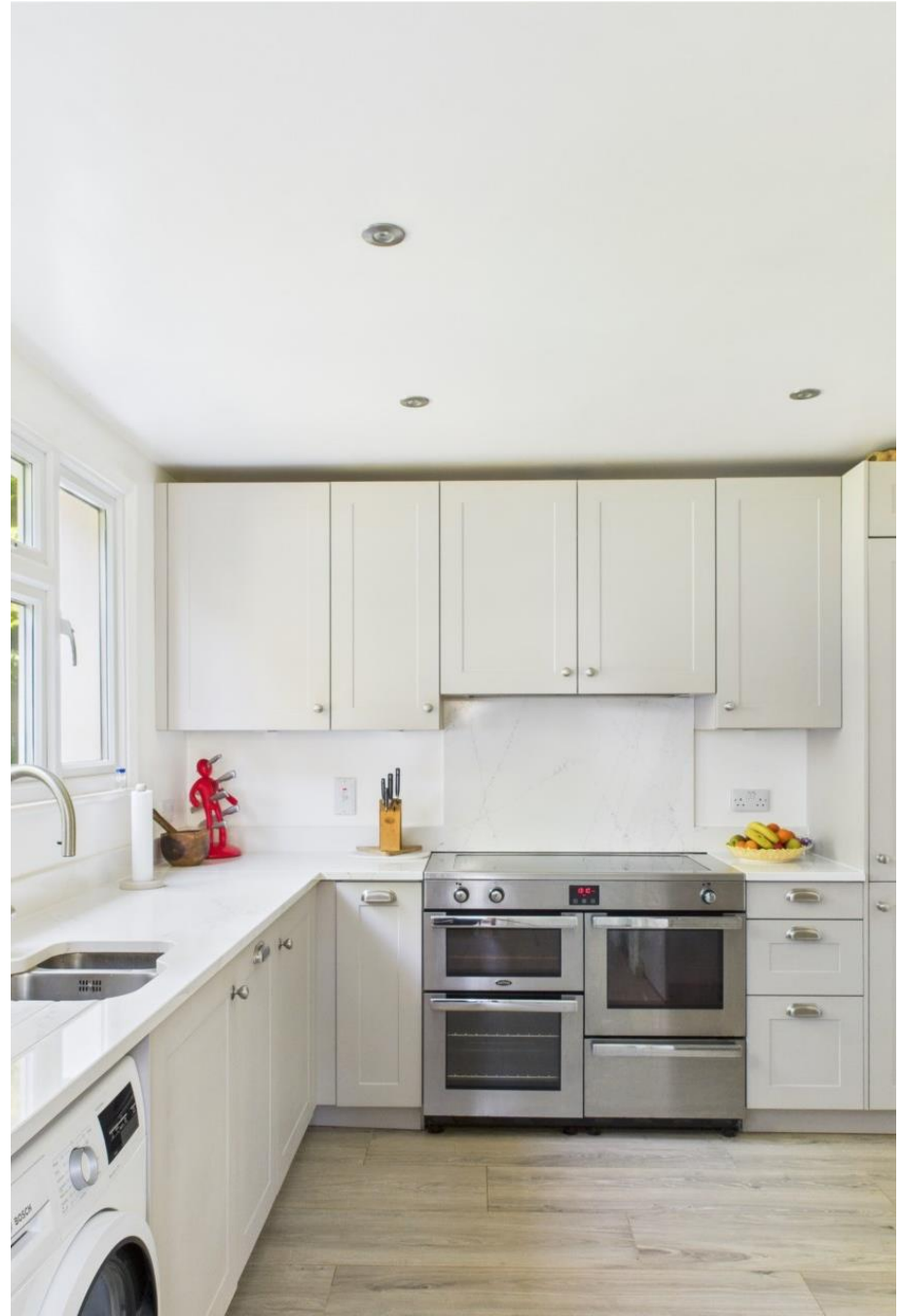
- Detached dormer bungalow
- Four bedroom/ Two bathroom
- Nature rich setting
- Vast mature gardens
- Paddock and additional land
- Ample parking and garaging















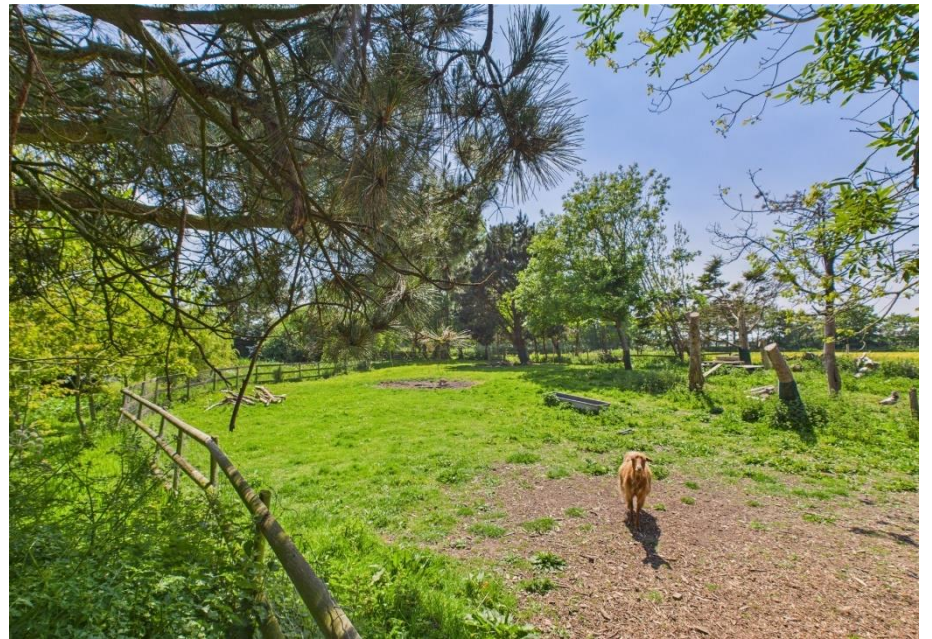




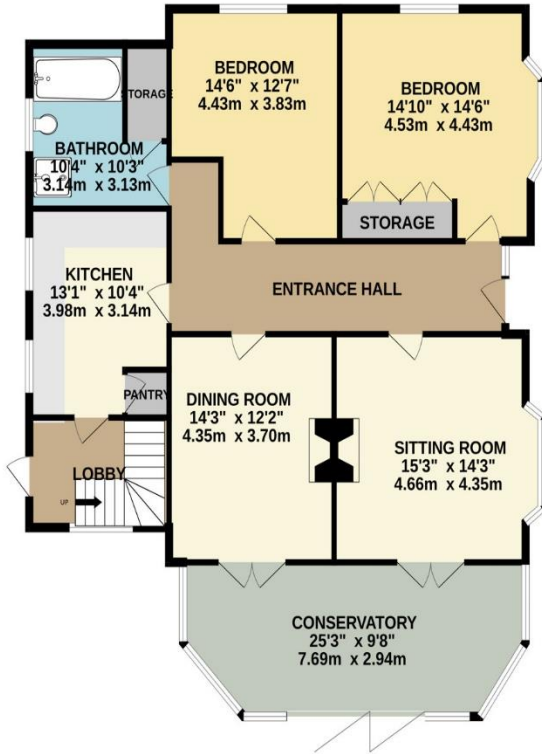








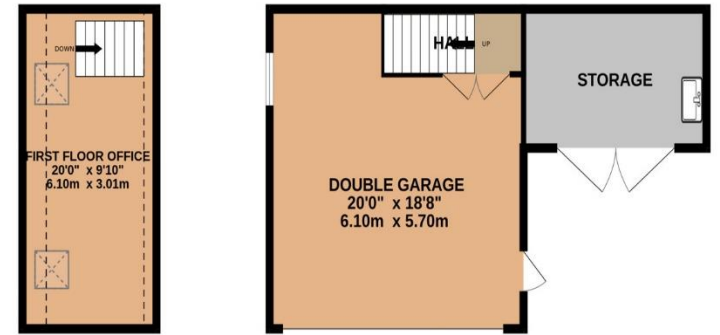
GROUND FLOOR  
1439 sq.ft. (133.7 sq.m.) approx.



1ST FLOOR  
822 sq.ft. (76.4 sq.m.) approx.



2ND FLOOR  
688 sq.ft. (63.9 sq.m.) approx.



TOTAL FLOOR AREA : 2949 sq.ft. (274.0 sq.m.) approx.

Whilst every attempt has been made to ensure the accuracy of the floorplan contained here, measurements of doors, windows, rooms and any other items are approximate and no responsibility is taken for any error, omission or mis-statement. This plan is for illustrative purposes only and should be used as such by any prospective purchaser. The services, systems and appliances shown have not been tested and no guarantee as to their operability or efficiency can be given.

Made with Metropix ©2026

This plan is for layout guidance only. Not drawn to scale unless stated. Windows and door openings are approximate. Whilst every care is taken in the preparation of this plan, please check all dimensions, shapes and compass bearings before making any decisions reliant upon them.

## Services

Mains water + Borehole

Soakaway

OFCH

Fully double glazed

Previous plan passed to extend

+441534 877977

Knight Frank Jersey

37-39 Halkett Place St Helier, Jersey JE2 4WG

[knightfrank.je](https://knightfrank.je)

Your partners in property

---

1. Particulars: These particulars are not an offer or contract, nor part of one. You should not rely on statements given by Knight Frank Jersey in the particulars, by word of mouth or in writing (“information”) as being factually accurate about the property, its condition or its value. Neither Knight Frank Jersey nor any joint agent has any authority to make any representations about the property, and accordingly any information given is entirely without responsibility on the part of Knight Frank Jersey. 2. Material Information: Please note that the material information is provided to Knight Frank Jersey by third parties and is provided here as a guide only. While Knight Frank Jersey has taken steps to verify this information, we advise you to confirm the details of any such material information prior to any offer being submitted. If we are informed of changes to this information by the seller or another third party, we will use reasonable endeavours to update this as soon as practical. 3. Photos, Videos etc: The photographs, property videos and virtual viewings etc. show only certain parts of the property as they appeared at the time they were taken. Areas, measurements and distances given are approximate only. 4. Regulations etc: Any reference to alterations to, or use of, any part of the property does not mean that any necessary planning, building regulations or other consent has been obtained. A buyer must find out by inspection or in other ways that these matters have been properly dealt with and that all information is correct. 5. Fixtures and fittings: A list of the fitted carpets, curtains, light fittings and other items fixed to the property which are included in the sale (or may be available by separate negotiation) will be provided by the Seller’s Lawyer. Particulars dated 05/05/2026. All information is correct at the time of going to print.

