

## Little Somerset Street, E1

£2,500 Per calendar month

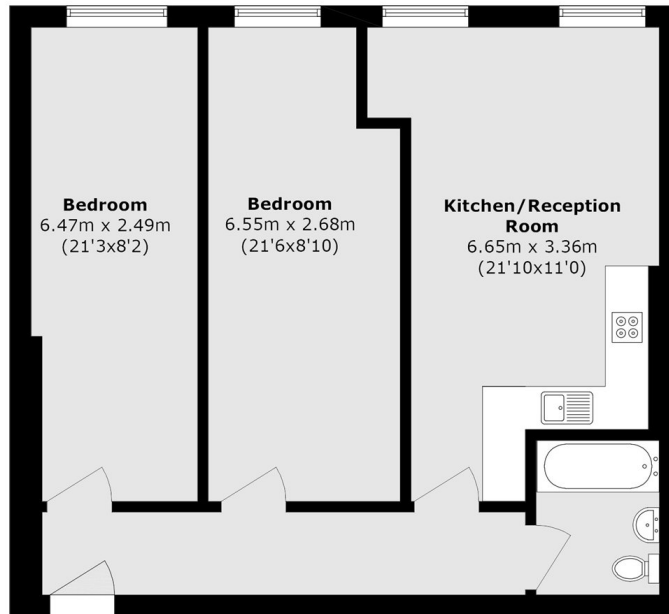
A well presented two bedroom apartment located in the heart of Aldgate. This purpose built property has a spacious open-plan reception, two double bedrooms, wood floors and a modern feel throughout.

Located across the road from Aldgate Station and within easy reach of Brick Lane, Shoreditch, Bank and Liverpool street making this the perfect central location for access to the City.

### Features

- Two Double Bedrooms
- Open-Plan
- Lift Access
- Central Location
- Wooden Floors Throughout
- Modern Finish Throughout

# Little Somerset Street, London, E1



Total area (approx.): 69.0 sq. m (742.7 sq. ft)