

bear

Estate Agents



Guide Price £1,250,000 - £1,400,000

This magnificent detached house offers an exceptional living experience. With six generously sized bedrooms, three of which includes an ensuite bathroom, including a primary suite that boasts two walk-in wardrobes, an ensuite bathroom, and a private balcony, this home is designed for both comfort and luxury. Three of the bedrooms feature their own ensuite bathrooms, ensuring convenience for family and guests alike.

The property is a true entertainer's dream, featuring three inviting reception rooms that provide ample space for relaxation and social gatherings. The heart of the home is a spacious kitchen, equipped with newly fitted appliances, which seamlessly connects to the rear of the property. A utility/laundry room adds practicality, offering plenty of storage and easy access to the outdoor space.

Step outside to discover a stunning swimming pool with built in hot tub, perfect for enjoying warm summer days, alongside an outbuilding that has been transformed into a delightful games room, complete with a bar and pool table. This versatile space is ideal for hosting friends or enjoying family time.

- *Guide £1,250,000 to £1,400,000*
- Primary Bedroom With Two Walk In Wardrobes and an ensuite
- Three Ensuite Bathrooms
- Utility Room
- Summer House
- Two Reception Rooms
- Spacious Kitchen Diner
- Garage
- Fitted Swimming Pool with built in hot tub
- Must View!

Ashingdon Road

Rochford

£1,250,000

Guide Price



Ashington Road



Entrance Hall

This beautiful property includes an eight channel Hik-Vision security system, including night vision cameras. Whether you're home or away, rest easy knowing your property is under 24/7 surveillance, providing clear visibility even in complete darkness. Entering through an impressive set of grand double doors, this welcoming entrance hall sets the tone for the elegance found throughout the mansion. Featuring sleek tiled flooring, a wall-mounted radiator, and ample space for storage or statement furnishings, the hall provides seamless access to all principal ground floor rooms as well as the sweeping staircase leading to the upper landing.

Kitchen/Diner

21'9" x 30'4"

This expansive open-plan kitchen and dining area is a true centrepiece, featuring exquisite tiled flooring throughout. At the heart of the kitchen lies a striking marble island, complete with a fitted sink and tap, surrounded by sleek eye and base-level units for ample storage. The space is fully equipped with high-end appliances, including an electric hob, oven, microwave, and integrated fridge freezer, ensuring both style and convenience. The dining area is bathed in natural light, thanks to floor-to-ceiling windows and sliding doors that seamlessly connect to the garden, while a skylight above the dining table enhances the airy, open feel. The adjoining lounge area features a chic panelled feature wall, with a built-in space for a TV, offering the perfect space for both entertaining and relaxation.

Second Reception Room

11'5" x 24'5"

Carpeted flooring throughout, a stylish wall-mounted radiator. A striking feature TV wall creates a focal point in the room, while double doors to the rear open onto the outdoor space. The room is further enhanced by grand floor-to-ceiling windows, offering breath taking views of the rear grounds and flooding the space with natural light.

Living Room

10'7" x 14'1"

Carpeted flooring throughout, complemented by a wall-mounted radiator for added comfort. With ample power points and generous space for storage, this room is both practical and versatile. A double-glazed window to the side.

Utility Room

7'7" x 15'0"

Tiled flooring throughout and a range of sleek eye and base level units, offering ample storage and workspace. There is designated space for a washer and dryer, as well as room to accommodate a double fridge. Convenient access to the rear of the property further enhances the room's practicality.

Family Bathroom

Tiled flooring throughout and a smooth ceiling with contemporary inset spotlights. The space is equipped with a sleek bathtub, a separate glass-fronted shower enclosure, a chrome heated towel rail, and a modern vanity sink unit with integrated storage, seamlessly connected to the WC.

Bedroom Four

12'2" x 14'3"

Carpeted flooring throughout, offering a comfortable and inviting atmosphere. It features a wall-mounted radiator for optimal warmth, multiple power points for convenience, and bespoke fitted storage and double glazed bay windows to the rear.

Bedroom Five

12'1" x 14'3"

Carpeted flooring throughout, complemented by a wall-mounted radiator for added comfort. The space offers ample room for storage and is finished with a smooth ceiling, inset with a central spotlight to enhance the room's atmosphere. Double-glazed bay windows to the rear.

Bedroom Six

12'3" x 11'6"

Carpeted flooring throughout, a wall-mounted radiator for year-round comfort, and bespoke fitted storage solutions. The space is equipped with convenient power points and benefits from a double-glazed window to the rear.

WC

Tiled flooring and walls surround. A striking metal towel rail adds both style and functionality, while a feature panelled wall. The contemporary sink unit and floating WC offer a modern, minimalist design. A double-glazed window to the side allows natural light to fill the space.

Landing

Carpeted flooring throughout, space for storage and access to all bedrooms.

Primary Bedroom

19'0" x 19'8"

Carpeted flooring throughout, ample storage space, multiple power points, a wall-mounted radiator, and double-glazed doors that open onto a spacious balcony. Additional doors provide access to two walk-in wardrobes and a luxurious ensuite bathroom.

Walk-In-Wardrobe

7'4" x 24'4"

Carpeted flooring, extensive fitted eaves storage and wardrobes spanning the main wall, and a wall-mounted radiator for year-round comfort. Double-glazed rear-facing windows flood the room with natural light and offer picturesque views, complemented by space for fitted seating area.

Ensuite

Accessed via a sleek sliding door, the luxurious eaves ensuite boasts contemporary tiled walls and flooring throughout, featuring a floating WC, heated towel rail, stylish double vanity unit, and a spacious fitted shower enclosure complete with built-in seating.

Walk-In-Wardrobe And Ensuite

21'6" x 12'2"

Carpeted flooring throughout, complemented by bespoke fitted storage and smooth ceilings with inset spotlights for a sleek, modern finish. The space seamlessly flows into an opulent marble-clad area, featuring a statement central bathtub positioned beneath a skylight, complete with a built-in television.

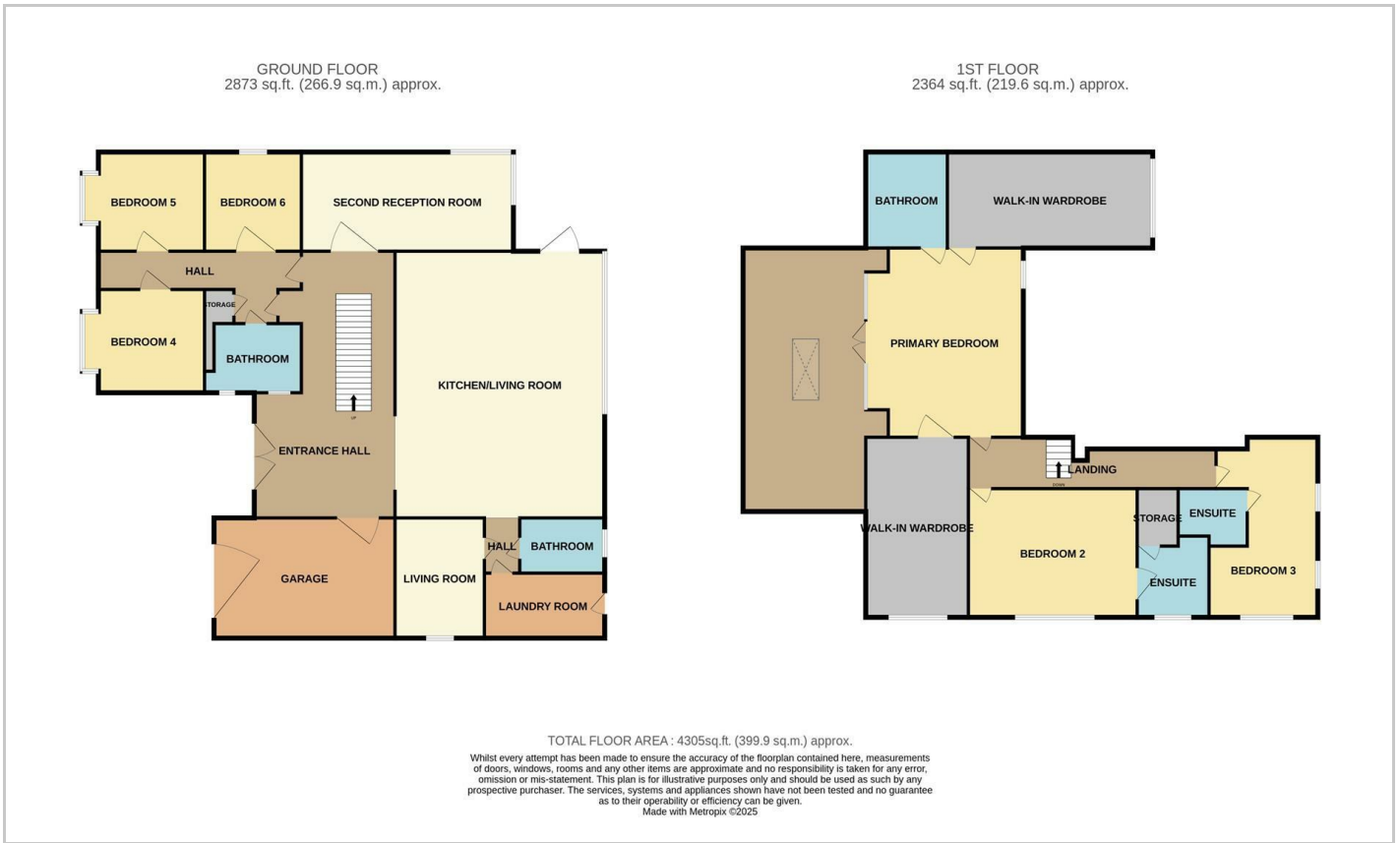
Bedroom Two

11'8" x 12'5"

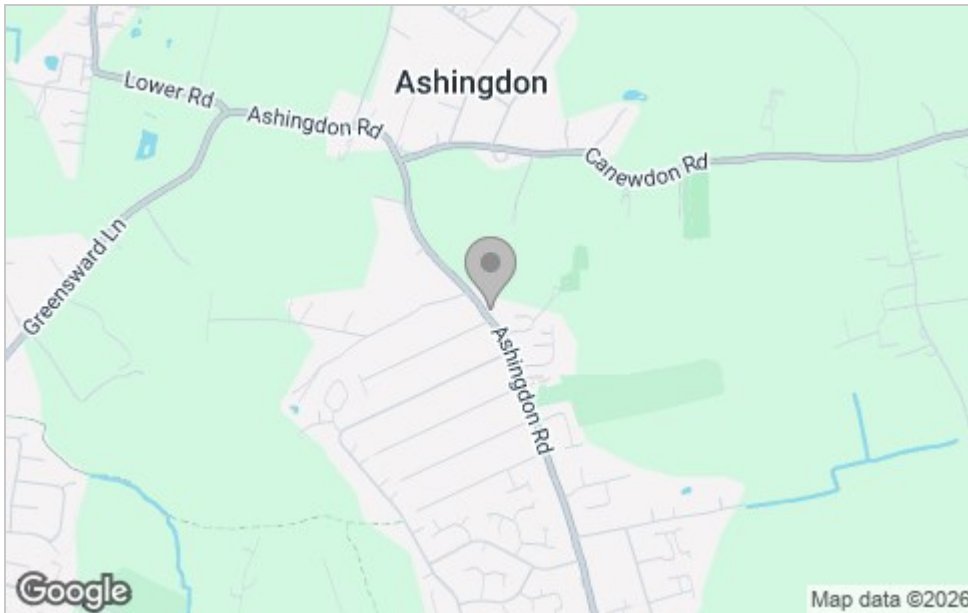
Carpeted flooring throughout, ample power points, and generous space for storage. A wall-mounted radiator, double-glazed window to the front aspect allows for natural light and pleasant views. The room also benefits from private access to a stylish ensuite bathroom, adding convenience and a touch of luxury.



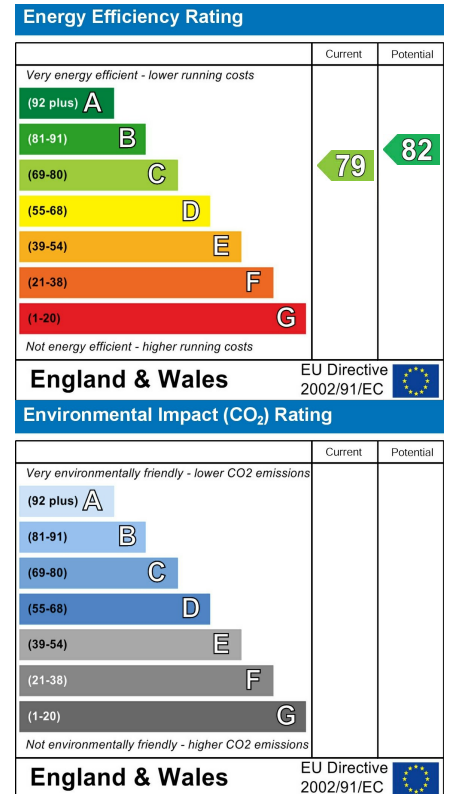
Floor Plan



Area Map



Energy Efficiency Graph



Viewing

Please contact our Hockley Office on 01702 416476 if you wish to arrange a viewing appointment for this property or require further information.

These particulars, whilst believed to be accurate are set out as a general outline only for guidance and do not constitute any part of an offer or contract. Intending purchasers should not rely on them as statements of representation of fact, but must satisfy themselves by inspection or otherwise as to their accuracy. No person in this firm's employment has the authority to make or give any representation or warranty in respect of the property.

11 Main Road, Hockley, Essex, SS5 4QY

Office: 01702 416476 hockley@bearestateagents.co.uk <https://www.bearestateagents.co.uk>