



Eyot House

Sun Passage, SE16

£2,750 per month
(£634.62 per week)

This stunning and contemporary two-bedroom, two-bathroom apartment offers a bright and airy living experience, enhanced by a spacious private corner balcony and an open-plan living area.

CHESTERTONS



Eyot House

Sun Passage, SE16

- SHORT LET
- ALL BILLS INCLUDED
- TWO BEDROOMS
- FURNISHED



SHORT LET* This stunning and contemporary two-bedroom, two-bathroom apartment offers a bright and airy living experience, enhanced by a spacious private corner balcony and an open-plan living area.

Minimum Term: 2 months
Deposit Required: £3,173.08
Local Authority: London Borough of Southwark
Council Tax Band: E
EPC Rating: B
Furnished

Score	Energy rating	Current	Potential
92+	A		
81-91	B	83 B	83 B
69-80	C		
55-68	D		
39-54	E		
21-38	F		
1-20	G		

Chestertons Tower Bridge Lettings

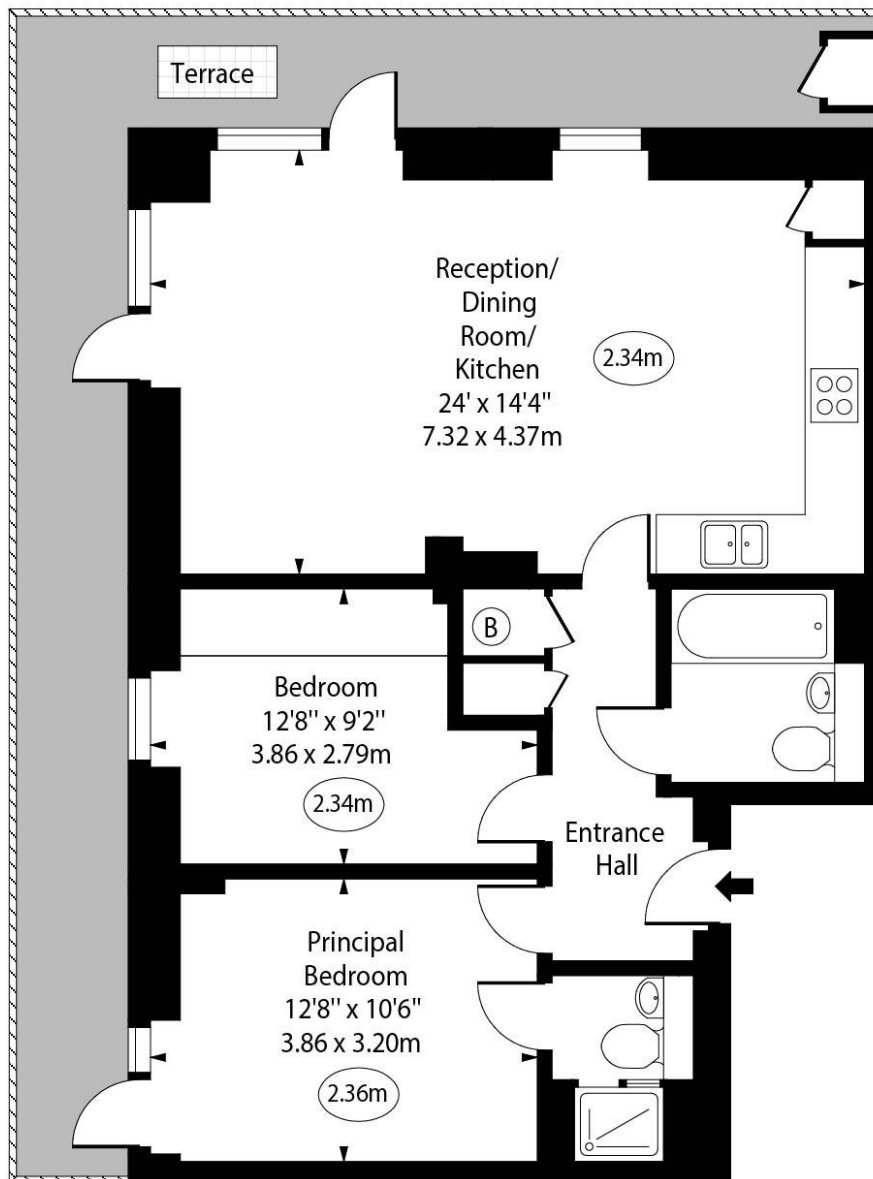
220 Tower Bridge Road
 Tower Bridge
 London
 SE1 2UP
towerbridgelettingsusers@chestertons.co.uk
 02073576911
[chestertons.co.uk](https://www.chestertons.co.uk)

Additional tenant charges apply (fees apply to non-AST tenancies only)
 Tenancy Agreement Fee: £300
 References per Tenant/Guarantor: £60
 Inventory check (approx. £100 – £250 inc. VAT)
[chestertons.co.uk/property-to-rent/applicable-fees](https://www.chestertons.co.uk/property-to-rent/applicable-fees)

Eyot House, Sun Passage, SE16



○ - Ceiling Height



Sixth Floor

Approx Gross Internal Area 710 Sq Ft - 65.96 Sq M

For Illustration Purposes Only - Not To Scale

www.goldlens.co.uk

Ref. No. 025336M

