



**Guide Price**  
**£285,000**

**Leasehold**

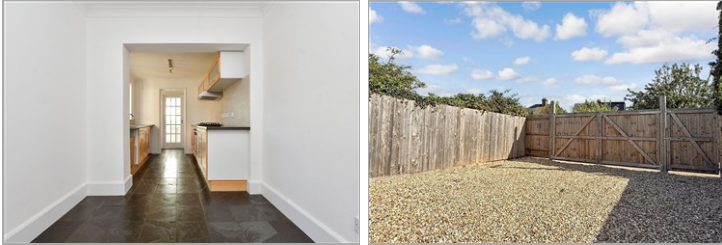
1x  1x  1x 

**Argyle Road,  
Whitstable, Kent, CT5**

**OVER 60?**

Secure this property  
for up to **59% less!**

*Wards*  
Helping you move forwards



## Main features

- No onward chain
- Off-road parking for multiple vehicles to the rear
- Large garden with a long lawn and decking area
- Neutrally presented throughout, with generously proportioned rooms
- Separate kitchen/diner and lounge provide a traditional layout

## Accommodation

### GROUND FLOOR

Entrance Hallway

Bedroom : 14'6 x 11'8 (4.42m x 3.56m)

Lounge: 12'3 x 11'10 (3.74m x 3.61m)

Dining Area: 8'8 x 7'11 (2.64m x 2.41m)

Kitchen: 8'3 x 7'9 (2.52m x 2.36m)

Inner Hall

Bathroom: 7'10 x 5'6 (2.39m x 1.68m)

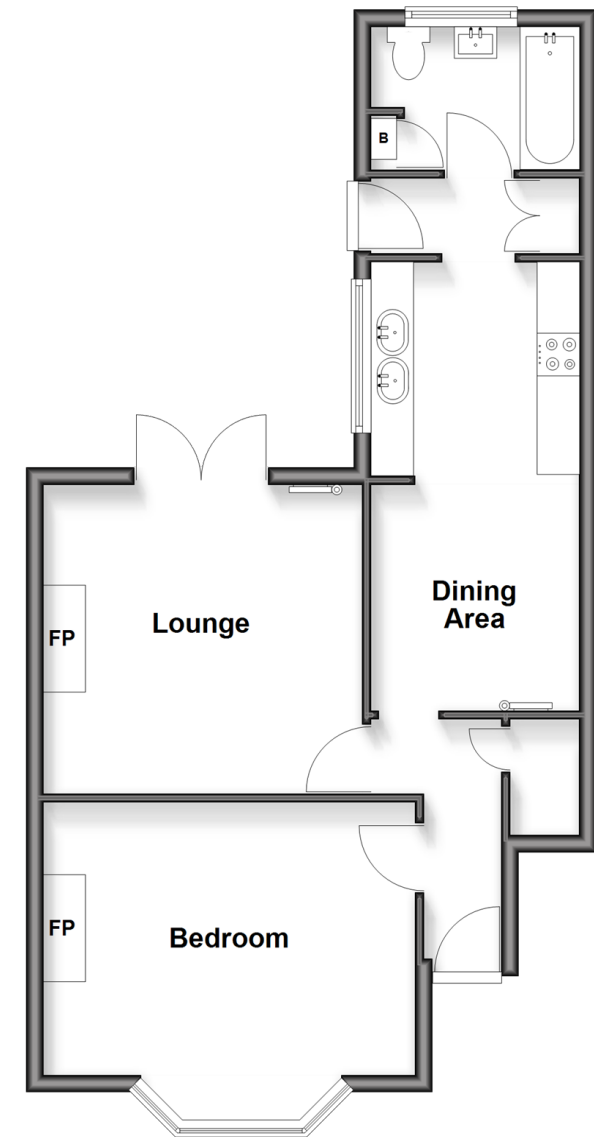
### OUTSIDE

Rear Garden

Off Road Parking

## Ground Floor

Approx. 52.9 sq. metres (569.4 sq. feet)



Call Whitstable - 01227 772272 ■ [wardsofkent.co.uk](http://wardsofkent.co.uk)

- Legal advice should be taken to verify fixtures/fittings, planning, alterations and/or lease details
- Appliances & services are untested, dimensions are approximate and floor plans are not to scale
- Through a Homewise Home For Life Plan people aged 60+ can secure this property for up to 59% less, by purchasing a Lifetime Lease



12032904/20260107/NF/NF