



GRANGE ROAD, W4

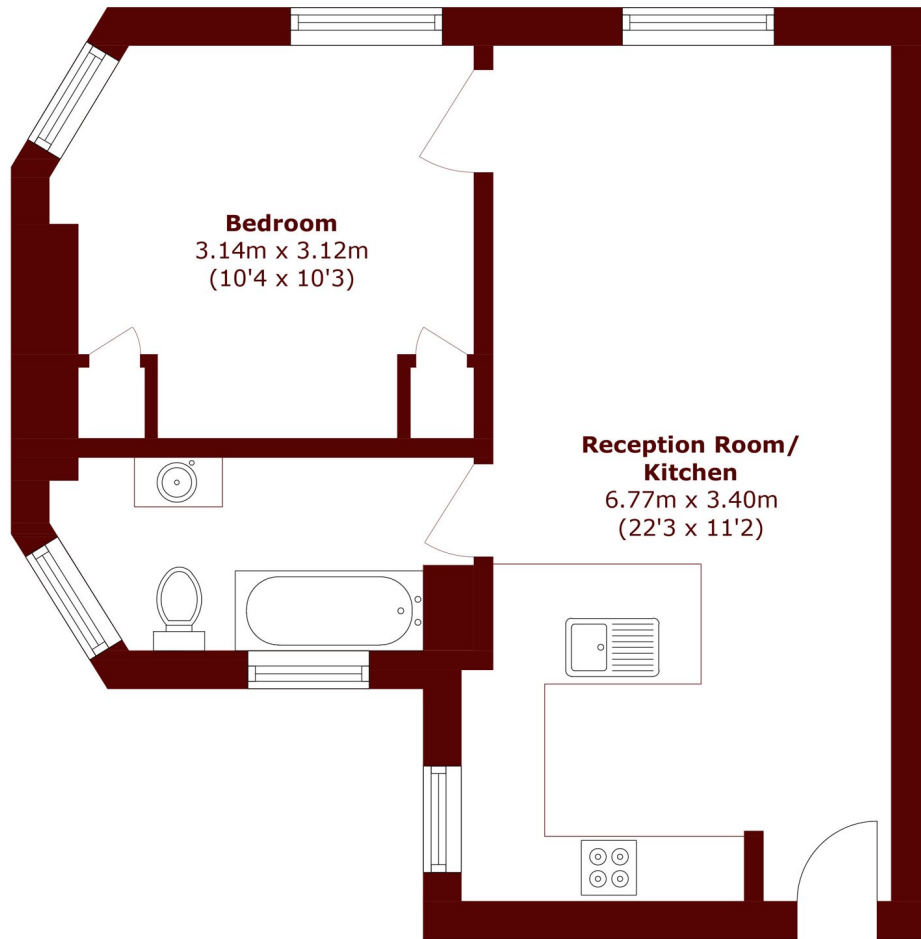
£400,000

Perfect for a first-time buyer or as a pied-à-terre, this beautifully presented ground-floor one-bedroom apartment is set within an attractive period building on the peaceful Grange Road.

One bedroom
Ground floor
Period property

Share of freehold
Recently refurbished
Energy rating: d

STEP INSIDE GRANGE ROAD



Total area (approx.): 37.9 sq. m (407.9 sq. ft)

Chiswick
020 8994 2556

Energy Rating: D We aim to make our particulars both accurate and reliable. However, they are not guaranteed; nor do they form part of an offer or contract. If you require clarification on any points then please contact us, especially if you're traveling some distance to view. Please note that appliances and heating systems have not been tested and therefore no warranties can be given as to their good working order

MARSH &
PARSONS