



Carnegie

Estate Agents, Surveyors and Property Management

Handside House, Handside Lane, Welwyn Garden City, Herts AL8 6TA

Tel: 01707 330373/4

Web: www.carnegieuk.com



Carnegie Estate Agents

20 Conduit Mews, London, W2 3RE

£3,500 Per Calendar Month

A fantastic modern two bedroom mews flat on the ground floor of this popular cobbled street near Paddington. With two double bedrooms, one bathroom and an open plan reception with fitted kitchen. Nestled in a private mews near Hyde Park and Kensington Gardens, the closest stations are Lancaster Gate (4 mins) and Paddington (3 mins). Conduit Mews runs from a discreet arch off Praed Street and on to Spring Street. Transport facilities are numerous and include Lancaster Gate (Central line) and Paddington Station (Heathrow Express, mainline rail services, Elizabeth line, Bakerloo, Circle, District and Hammersmith & City lines).

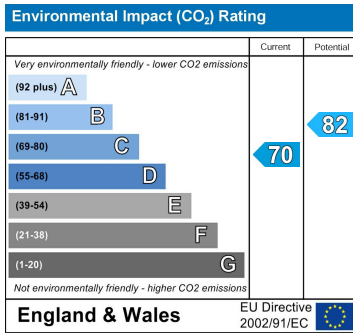
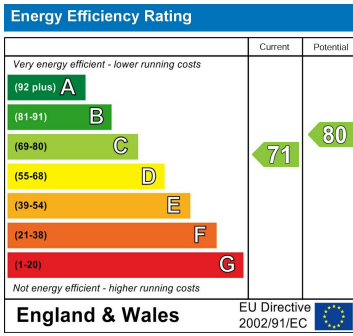
The fantastic open spaces of Hyde Park and Kensington Gardens are a few minutes walk away.



Company incorporated in England No. 4713968

VAT No. 745 8368 91





Living/Dining area

21'10" x 17'4" (6.66m x 5.30m)

Kitchen

9'10" x 7'2" (3m x 2.19m)

Bedroom 1

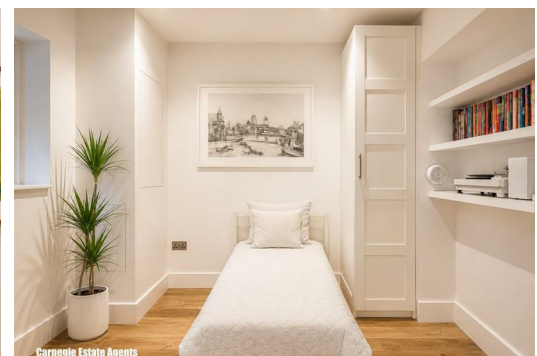
12'2" x 10'4" (3.72m x 3.16m)

Bedroom 2

9'1" x 9'6" (2.77m x 2.92m)

Bathroom

6'0" x 7'2" (1.85m x 2.19m)



Handside House, Handside Lane, Welwyn Garden City, Herts AL8 6TA

Company incorporated in England No. 4713968

VAT No. 745 8368 91

