



Oxbow Crescent, March
Guide Price **£375,000** **Freehold**

**Sharman
Quinney**

Key Features



- Beautifully Presented Family Home
- Open Plan Kitchen/Diner
- Garage and Off-Road Parking
- Very Popular Location
- Ensuite to Bedroom One

Ground Floor

Entrance Hall -

Laminate Flooring. Stairs to first floor. Access to downstairs WC, lounge and kitchen/diner.

Downstairs WC -

Laminate flooring. Fitted with low rise toilet and wall mounted hand wash basin.

Lounge -

Bay window to front. Fitted carpet. Feature fireplace. Double doors into dining area.

Dining Area -

Bay windows and double doors leading into conservatory. Laminate flooring. Open plan into kitchen.



Kitchen/Breakfast Room -

Window and door into rear garden. Fitted with a range of modern wall and base units in a gloss finish, a central island with breakfast bar and wine fridge. Integrated appliances including, eye level double oven, gas hob with overhead extractor fan and dishwasher. Plumbing for washing machine, space for American style fridge/freezer, gas fired boiler, one and half bowl sink unit. Door into integral garage.

Conservatory -

Brick and UPVC construction. Laminate flooring. Double doors to rear garden. Air conditioning unit.

First Floor & Landing

Fitted carpet. Access to all bedrooms, main bathroom and airing cupboard. Access to loft space.

Bedroom One -

Window to front. Fitted carpet. Built in wardrobes.

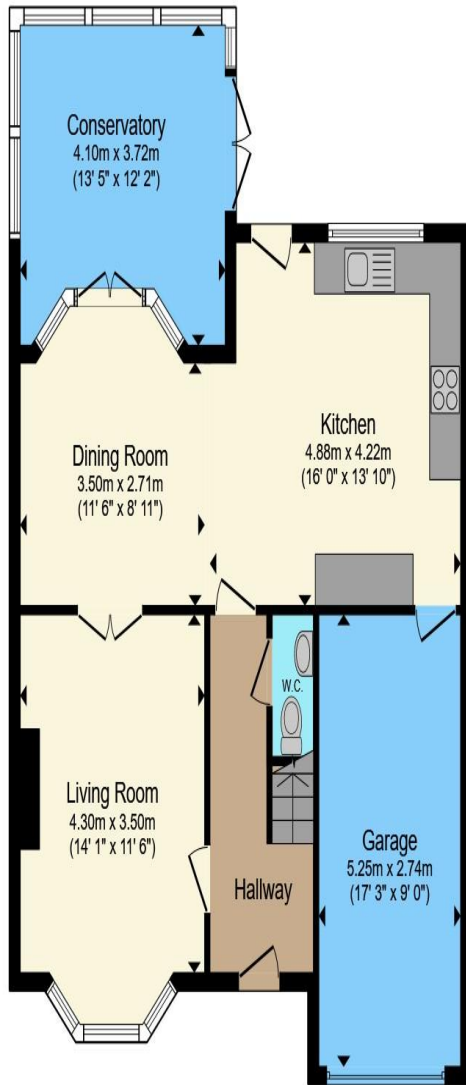
En-suite -

Window to front. Laminate flooring. Fitted with a three-piece suite comprising of corner shower, vanity wash hand basin with storage under and low-rise toilet.

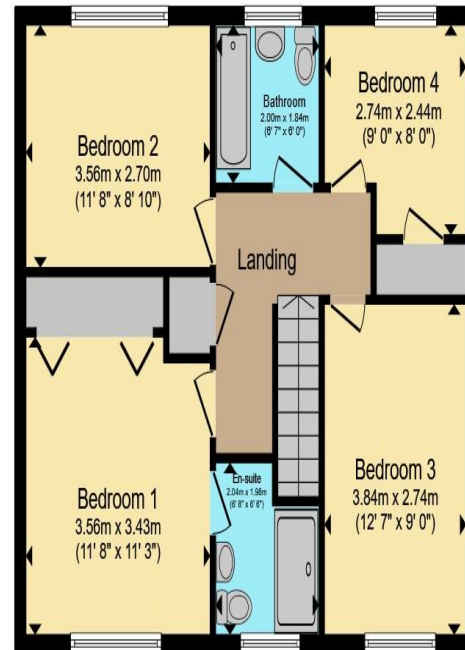
Bedroom Two -

Window to front. Fitted carpet.





Ground Floor



First Floor

Total floor area 146.3 m² (1,575 sq.ft.) approx

This floor plan is for illustrative purposes only. It is not drawn to scale. Any measurements, floor areas (including any total floor area), openings and orientation are approximate. No details are guaranteed, they cannot be relied upon for any purpose and they do not form part of any agreement. No liability is taken for any error, omission or misstatement. A party must rely upon its own inspection(s). Powered by www.propertybox.io

**Sharman
Quinney**

Bedroom Three -
Window to rear. Fitted carpet.

Bedroom Four -
Window to rear. Fitted carpet. Built in storage cupboard.

Bathroom -
Window to rear. Laminate flooring and tiled walls. Fitted with a three-piece suite comprising of P shape bath with overhead shower, vanity wash hand basin with storage under and low-rise toilet. Heated towel rail.

Outside -
To the front of the property there is a driveway leading to the Garage with up and over door and fitted with light and power. The rest of the front garden is laid to lawn with mature shrub borders. Access to the rear garden via gate to the side. The rear garden is laid mainly to lawn with raised patio area with large plant sleepers, perfect for entertaining and a real sunspot in the warmer months.

To view this property call Sharman Quinney on:
01354 661166

Selling your property?

Contact us to arrange a **FREE** home valuation.

 01354 661166

 8 Broad Street, MARCH, Cambridgeshire, PE15 8TG

 march@sharmanquinney.co.uk

 www.sharmanquinney.co.uk



 SCAN ME



Sharman Quinney Holdings Limited is registered in England and Wales under company number 4174227, Registered Office is Cumbria House, 16-20 Hockliffe Street, Leighton Buzzard, Bedfordshire, LU7 1GN. VAT Registration Number is 500 2481 05.

1: These particulars do not constitute part or all of an offer or contract. 2: The measurements indicated are supplied for guidance only and as such must be considered incorrect. 3: Potential buyers are advised to recheck the measurements before committing to any expense. 4: Sharman Quinney has not tested any apparatus, equipment, fixtures, fittings or services and it is the buyers interests to check the working condition of any appliances. 5: Sharman Quinney has not sought to verify the legal title of the property and buyers must obtain verification from their legal representative. 6: Intending purchasers will be asked to produce identification documentation at a later stage and we would ask your co-operation in order that there will be no delay in agreeing the sale. Ref: MRC207106 - 0001

