



## 2 Anchor Court, Marina, SA1 3XA Offers Over £225,000

A well-presented TWO BEDROOM APARTMENT FIRST FLOOR apartment situated in the highly sought-after Anchor Court within SWANSEA MARINA. The property has been recently refreshed throughout, featuring new flooring, fresh contemporary decor and also comprises a modern fitted kitchen, a stylish & practical bathroom and a spacious open-plan living/dining room, filled with natural light and designed for easy modern living, with sliding patio doors opening onto a spacious balcony - ideal for enjoying the marina setting. Both bedrooms are doubles, offering flexible space for guests, home working or everyday use. Set within a safe and well-maintained development, this apartment offers a superb lock-up-and-go lifestyle, just moments from the waterfront, city centre and a wide range of cafes, restaurants and leisure amenities. A great opportunity for buyers seeking low-maintenance coastal living in a prime marina location.

Set in a desirable corner position within Swansea Marina, the apartment benefits from an allocated parking space. Ideally placed for easy access into the city centre and Fabian Way, it's a superb choice for commuters. The marina setting provides a safe, level environment for walking and cycling, with scenic waterside routes running the full circuit of the promenade and the beach just moments away, offering an effortlessly connected coastal lifestyle right on the doorstep. Call to view now!

[www.smithshomes.com](http://www.smithshomes.com)

**Hallway**

7'5" x 5'11" (2.28 x 1.81)

Featuring new carpet, radiator, intercom and built-in storage cupboard.

**Bathroom**

6'11" x 5'8" (2.12 x 1.74)

Fully tiled bathroom with pvcu windows, dual sink/storage units, bath and wc.

**Bedroom One**

11'11" x 9'11" (3.64 x 3.04)

Double bedroom with new fitted carpet, radiator and pvcu windows to the rear aspect.

**Bedroom Two**

10'4" x 6'11" (3.16 x 2.12)

Second bedroom with new fitted carpet, radiator and pvcu windows to the rear aspect.

**Kitchen**

9'8" x 8'11" (2.97 x 2.73)

Installed with a range of fitted wall & base units, worktop, stainless steel sink and well equipped with integral dishwasher, fridge, freezer, oven, gas hob and extractor. Open to the hallway and with serving hatch to the living room.

**Living/Dining Room**

17'0" x 13'9" (5.20 x 4.20)

A spacious living/dining room with new fitted carpet and a warm, contemporary feel, centred around sliding pvcu patio doors that flood the space with natural light and open onto the balcony. A bright, versatile room ideal for relaxed modern living & entertaining.

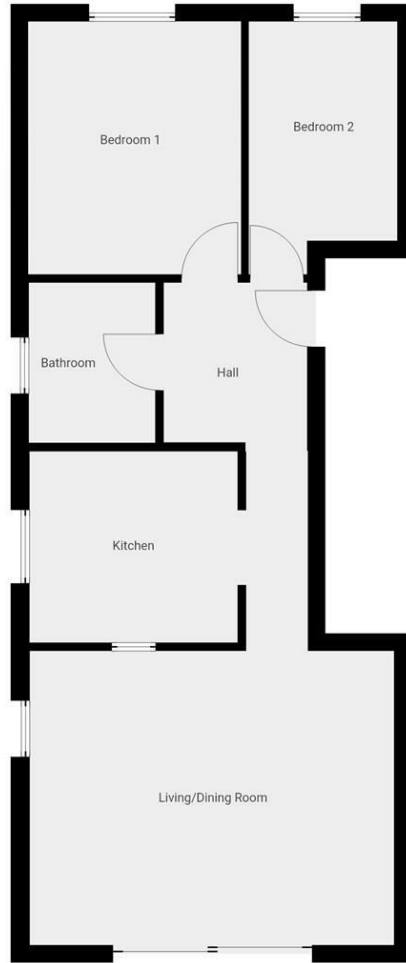
**External & Location**

The property benefits from a balcony accessed from the main living space, ideal for enjoying the fresh marina air and open outlook. Set within a well-maintained development with an allocated parking space, it offers a convenient and low-maintenance lifestyle, perfect for those seeking ease, security and a relaxed coastal way of living.

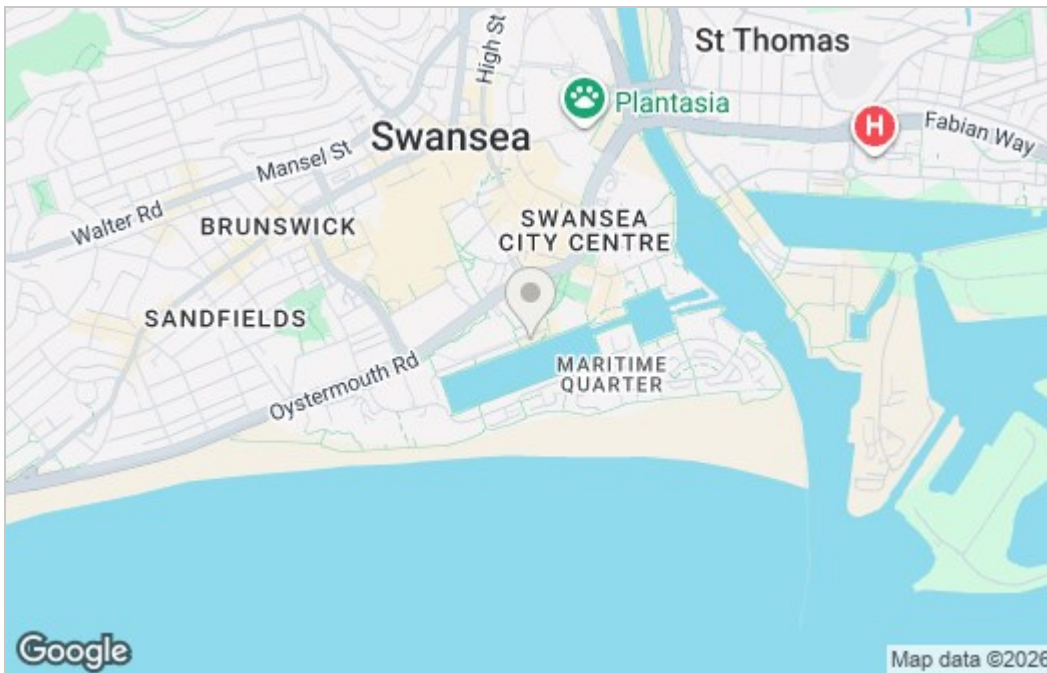
Situated in a prime position right on Swansea Marina, the apartment enjoys a n ever-changing waterside outlook across the marina, creating a calm yet vibrant backdrop to everyday living. The setting offers a superb coastal

lifestyle, with safe, level walks and cycle routes along the full promenade and the beach just moments away. The city centre is within easy reach, while Fabian Way provides excellent commuter links, making this an ideal blend of waterfront living and everyday convenience.

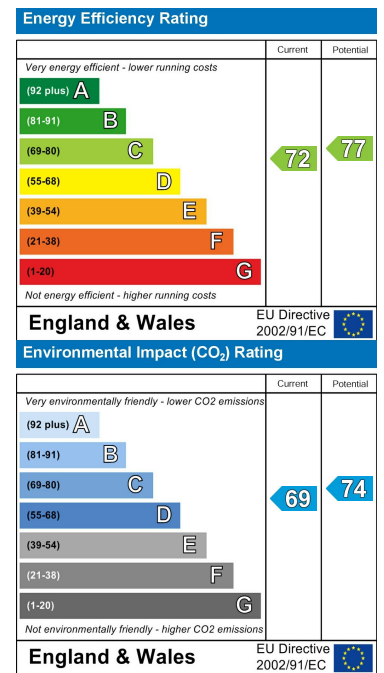
# Floor Plan



# Area Map



# Energy Efficiency Graph



Smiths Homes endeavour to maintain accurate depictions of properties in Virtual Tours, Floor Plans and descriptions, however, these are intended only as a guide and purchasers must satisfy themselves by personal inspection.

**Unit 4, 270 Cockett Road, Swansea, SA2 0FN**  
**T: 01792 465822 E: info@smithslettings.com**

