



Hay Meadow, Lenham, Kent, ME17 2FG
Offers In Excess Of £580,000



An exceptional example of a four-bedroom detached family home, positioned on a desirable corner plot with detached garage, at the edge of the development. This property has been kept in immaculate condition and was only constructed just three years ago.

The expansive ground floor features a double-fronted design, showcasing a dual-aspect sitting room complete with a square bay window at the front and an additional bay window on the side. Opposite the hallway, you'll find an open-plan kitchen and dining area equipped with contemporary units, another square bay window, and French doors that lead to the manicured rear garden. The ground floor also includes a utility room and a convenient cloakroom. The first floor is home to the principal bedroom with its own en-suite shower room, along with three more bedrooms and a spacious contemporary family bathroom featuring a four-piece suite, including both a bathtub and separate shower cubicle.

The front of the property benefits from a wrap around garden which has beautifully planted flowers and shrubs with a pathway leading to the front door and driveway. The rear garden has been thoughtfully landscaped by the current owners, who have created a patio with a fixed pergola with open and close roof and sides, perfect for year-round relaxation and entertaining and meticulously manicured lawn and borders. The property also benefits from a rear access to the garage for added convenience. The generous single garage with storage above is accessed via the driveway, providing parking side by side for two vehicles. Tenure: Freehold. Council Tax Band: F. EPC rating: B.



LOCATION

Lenham is a highly sought-after village nestled between Ashford and Maidstone, offering a variety of amenities, including 17th century pubs, tearooms, shops and historic market square, as well as both primary and secondary schools, and a railway station. The M20 motorway can be easily accessed from Leeds Castle, located approximately five miles away.

GROUND FLOOR

Entrance Hall

Sitting Room

Kitchen/Dining Area

Utility Room

W.C.

FIRST FLOOR

Principal Bedroom

En-suite Shower Room

Bedroom Two

Bedroom Three

Bedroom Four

Family Bathroom

EXTERNALLY

Front Garden

Detached Garage

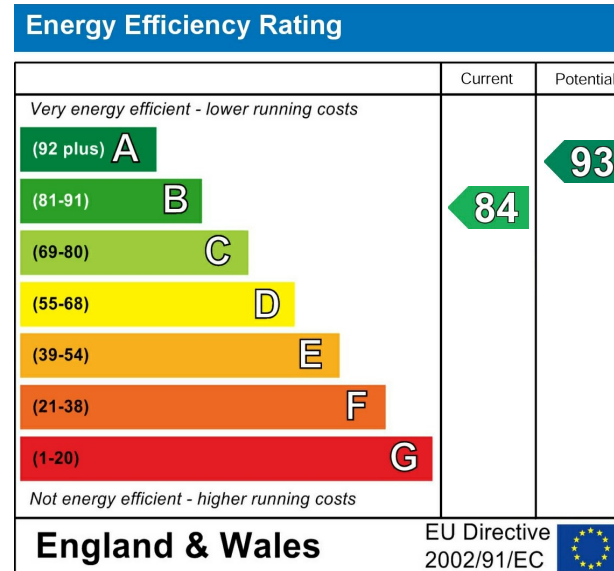
Driveway

Rear Garden

Pergola

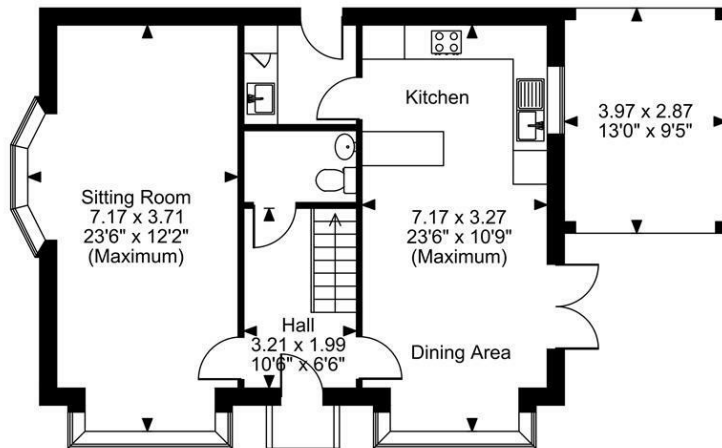
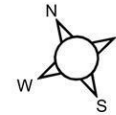
VIEWING

Strictly by arrangement with the Agent's Bearsted Office, 132 Ashford Road, Bearsted, Maidstone, Kent ME14 4LX. Tel: 01622 739574.

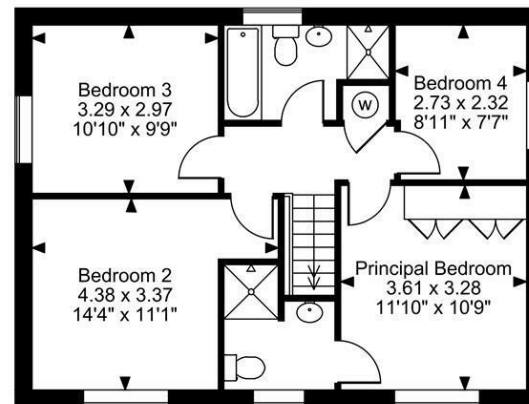


Page & Wells limited for themselves and for the vendors of this property whose agents they are give notice that: 1. These particulars do not constitute any part of, an offer or a contract. 2. All statements contained in these particulars as to this property are made without responsibility on the part of Page & Wells Limited or the Vendor. 3. None of the statements contained in these particulars as to the property is to be relied on as statements or representations of fact. 4. Any intending purchaser must satisfy himself by inspection or otherwise as to the correctness of each of the statements contained in these particulars. 5. The vendor does not make or give, and neither Page & Wells Limited nor any person in their employment has any authority to make or give any representation whatsoever in relation to this property. These particulars are supplied on the understanding that all negotiations are carried out throughout Page & Wells Limited. Properties with a reference prefixes EAA are those which Page & Wells Limited disclose an interest in accordance with the provisions of the Estates Agents Act 1979

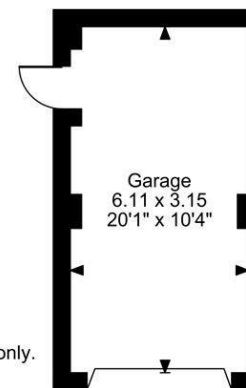
Hay Meadow, Lenham, Maidstone, Kent
 Approximate Gross Internal Area
 Main House = 1239 Sq Ft/115 Sq M
 Garage = 207 Sq Ft/19 Sq M
 Total = 1446 Sq Ft/134 Sq M



Ground Floor



First Floor



FOR ILLUSTRATIVE PURPOSES ONLY - NOT TO SCALE

The position & size of doors, windows, appliances and other features are approximate only.
 © ehouse. Unauthorised reproduction prohibited. Drawing ref. dig/8662299/SS

