



24 Ardbreck
Place, Holm,
Inverness, IV2
4QQ

Offers Over £140,000

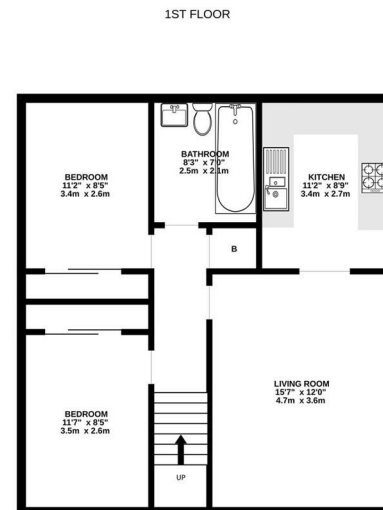


Fantastic opportunity to purchase this spacious two bedroom first floor flat in the quiet residential area of Holm, this property will appeal to first time buyers or as an investment property.

The home features a bright and generous lounge with excellent natural light from a large front facing window, and offering space for a dining table and chairs. The well appointed kitchen provides ample worktop space and a good range of units, making it practical for everyday cooking and storage, there is space for a washing machine and fridge/freezer. There are two well proportioned double bedrooms, both benefiting from built in storage, along with a family bathroom that includes a shower over the bath. The property also benefits from great loft space, offering superb additional storage

The property has its own private front door, a rear garden, and a garage. A driveway provides parking for up to three cars. Additional benefits include gas central heating and double glazing throughout.

- Spacious two bedroom first floor flat in prime location
- Lounge/diner, kitchen, two bedrooms, bathroom
- Sought after Holm primary and close to amenities
- Perfect first time buy or investment property
- Enclosed rear garden, garage, drive with parking for two cars
- EPC Band C



Extras: Add text here

Services: Add text here

Council Tax: B

Floor Area: 667.37 sq ft

Date of Entry: Add text here

Viewing: Don't delay – get in touch with Tailormade Moves today to arrange a viewing

The Greenhouse Beechwood
Business Park
Inverness
Highland
IV2 3BL

E:
info@tailormademoves.co.uk
T: 01463 233218

