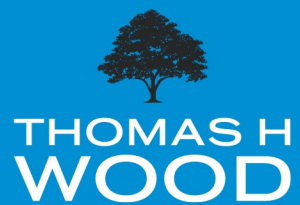




Glandwr Place,
Whitchurch, CARDIFF,
CF14 1DP



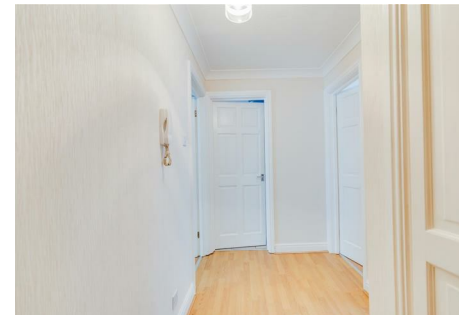
PCM
£950 PCM

2 Bedrooms
Flat/Apartment

A well appointed two bedroom apartment on the ground floor of this small development in the heart of Whitchurch village. Solid accommodation with allocated off road parking and within seconds of village amenities. Unfurnished with fitted wardrobes to one bedroom. Communal gardens next to a brook. Gas central heating. EPC rating D. Council Tax band C. Available June 2026 for a minimum twelve month term.

Features

- Attractive Ground Floor Apartment/Small Private Development
- Two Double Bedrooms
- Communal Gardens to Rear
- Allocated Parking in Communal Car Park
- Unfurnished with Gas Hob/Electric Oven/Fitted Wardrobes
- Private Location in Heart of Whitchurch Village/Short 50m Walk into Village
- Gas Central Heating
- Council Tax Band C/EPC Rating D
- Available June 2026/Minimum Twelve Month Term



Information

- Tenure:
- Council Tax Band: C
- Floor Area: 546.00 sq ft
- Current EPC Rating: C
- Potential EPC Rating: C



2 BEDROOMS



1 BATHROOMS



1 RECEPTION ROOMS

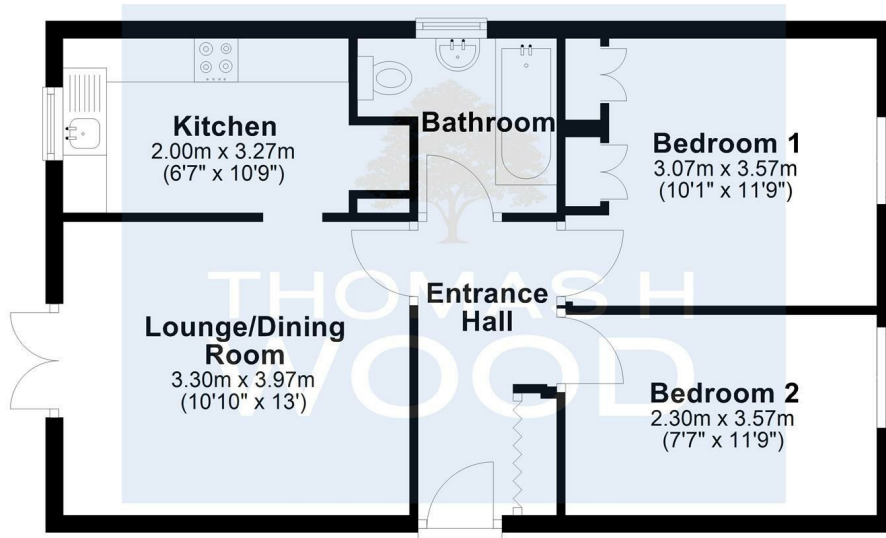


ENERGY RATING: C



Ground Floor

Approx. 50.8 sq. metres (546.3 sq. feet)



Total area: approx. 50.8 sq. metres (546.3 sq. feet)



Agents Note: Whilst every care has been taken to prepare these sales particulars, they are for guidance purposes only. All measurements are approximate and for general guidance purposes only and whilst every care has been taken to ensure their accuracy, they should not be relied upon and potential buyers are advised to recheck the measurements

Energy Efficiency Rating		Current	Potential
Vary energy efficient - lower running costs			
(92 plus) A			
(81-91) B			
(69-80) C		74	74
(55-68) D			
(39-54) E			
(21-38) F			
(1-20) G			
Not energy efficient - higher running costs			
England & Wales		EU Directive 2002/91/EC	



CONTACT

sales@thomashwood.com
02920 626 252
thomashwood.com

WHITCHURCH BRANCH

14 Park Road,
Whitchurch
CF14 7BQ

RADYR BRANCH

5 Station Road,
Radyr, Cardiff
CF15 8AA