



## 4 Martin Road

Mossley Hill, Liverpool, L18 4RN

**Offers over £425,000**

 3  1  3  D



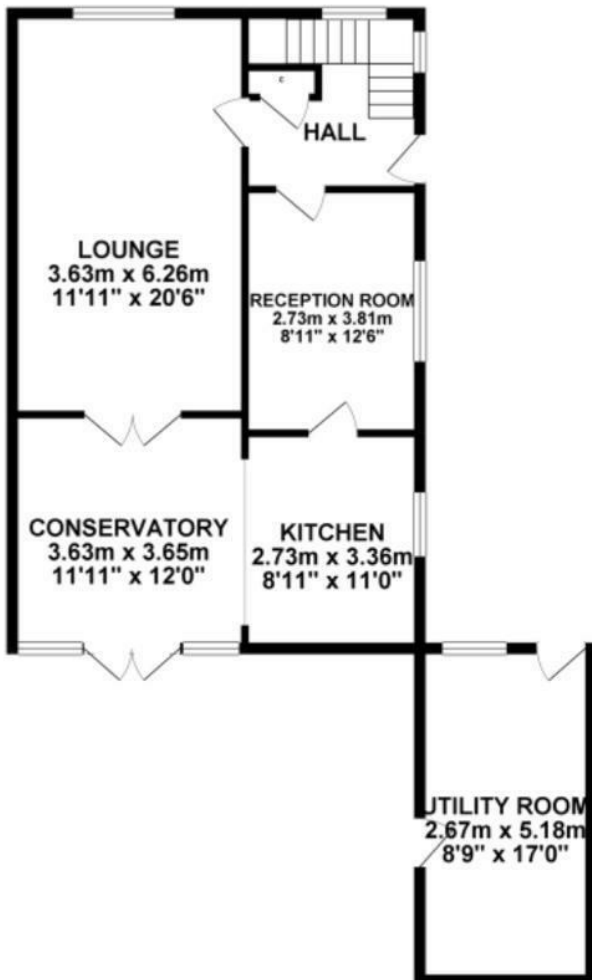
# 4 Martin Road

Mossley Hill, Liverpool, L18 4RN

**Offers over £425,000**



GROUND FLOOR 76.79 sq. m.  
( 826.56 sq. ft. )



1ST FLOOR 41.64 sq. m.  
( 448.19 sq. ft. )



TOTAL FLOOR AREA : 118.43 sq. m. ( 1274.74 sq. ft. ) approx.

Whilst every attempt has been made to ensure the accuracy of the floorplan contained here, measurements of doors, windows, rooms and any other items are approximate and no responsibility is taken for any error, omission or mis-statement. This plan is for illustrative purposes only and should be used as such by any prospective purchaser. The services, systems and appliances shown have not been tested and no guarantee as to their operability or efficiency can be given.  
Made with Metropix ©2022



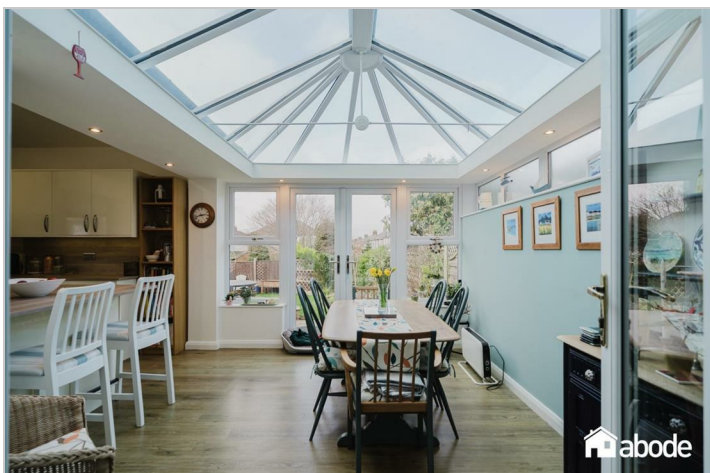
abode



abode



abode



abode



abode

