



Whitwell Drive, Drakelow, Burton-On-Trent, DE15 9WZ - Beautifully Presented Home

£350,000

🛏 3 🚿 2 🚗 2



An immaculately presented three-bedroom detached residence, offering versatile living spaces and a luxurious finish, ideally situated in the sought-after Drakelow area.

Whitwell Drive is situated within the popular Drakelow Park development on the outskirts of Burton-on-Trent. The area offers a modern residential setting with nearby green spaces and countryside walks, creating a pleasant balance between town and rural living. Burton-on-Trent town centre is easily accessible and provides a wide range of shops, supermarkets, restaurants and leisure facilities. The property also benefits from excellent transport links, with convenient access to the A38, A50 and A511, offering straightforward routes to Derby, Lichfield and Birmingham. A selection of well-regarded schools and local amenities are also within easy reach, making this an ideal location for families and commuters alike.

The accommodation is thoughtfully arranged and begins with a welcoming entrance hall. The ground floor features a spacious and bright open-plan kitchen/living/dining area, designed for modern family life and entertaining. A separate, beautifully presented living room provides an additional comfortable space for relaxation, complemented by a convenient guest WC. To the first floor, a generous principal bedroom benefits from a stylish en-suite shower room. There are two further versatile bedrooms and a contemporary family bathroom, providing ample space. Externally, the property boasts off-street parking, a driveway, a single garage that has been thoughtfully upgraded, and a large, inviting garden.

This beautifully presented home must be viewed to fully appreciate the space, layout and superb position it enjoys. Contact the office today to arrange your viewing.

Entrance Hall

A front-facing composite door opens into a welcoming entrance hall fitted with Amtico wood-effect flooring, house alarm system, a radiator and stairs rising to the first-floor accommodation. Doors provide access to the guest WC and living room.

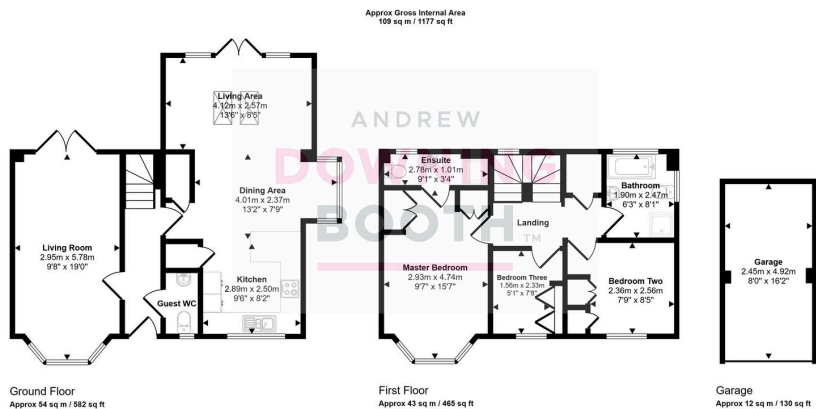
Living Room



ANDREW
DOWNING
BOOTH
ESTATE AGENTS



ANDREW
DOWNING
BOOTH
ESTATE AGENTS



This floorplan is only for illustrative purposes and is not to scale. Measurements of rooms, doors, windows, and any items are approximate and no responsibility is taken for any error, omission or mis-statement. Items such as bathroom suites are representations only and may not look like the real items. Made with Made Simple 360.

- Three Bedroom Detached Family Home
- Beautifully Presented Throughout
- Great Location Close To Local Schools & Amenities
- Master Bedroom With Ensuite Shower Room
- EPC Rating: B
- Set On A Popular New Build Development
- Open Plan Kitchen, Living, Dining Room
- Guest WC
- Well Maintained Private Rear Garden
- Council Tax Band: D

