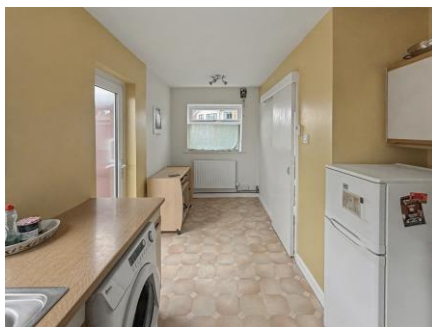




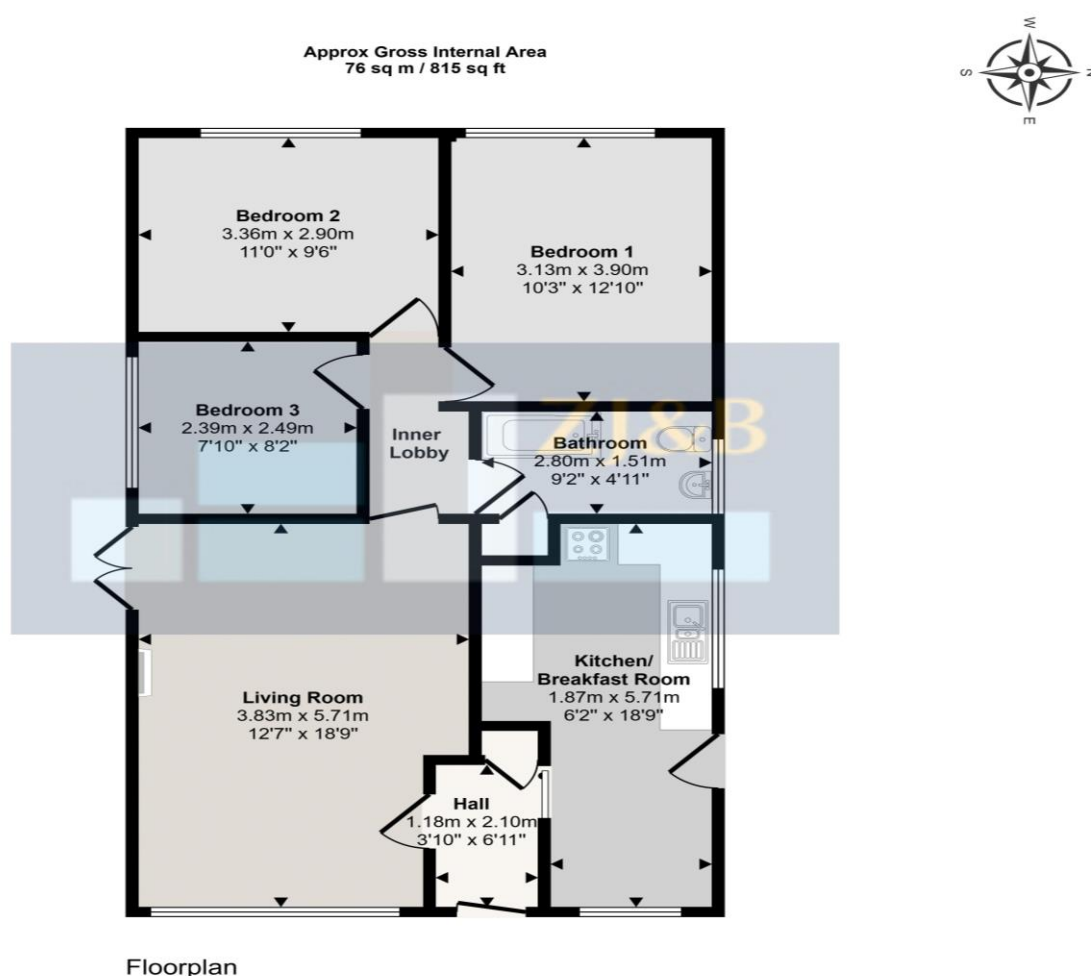
92 Highfields, Shrewsbury, Shropshire, SY2 5PJ

£350,000

**A detached 3-bedroom bungalow in the popular Highfields area,
enjoying a particularly large plot**



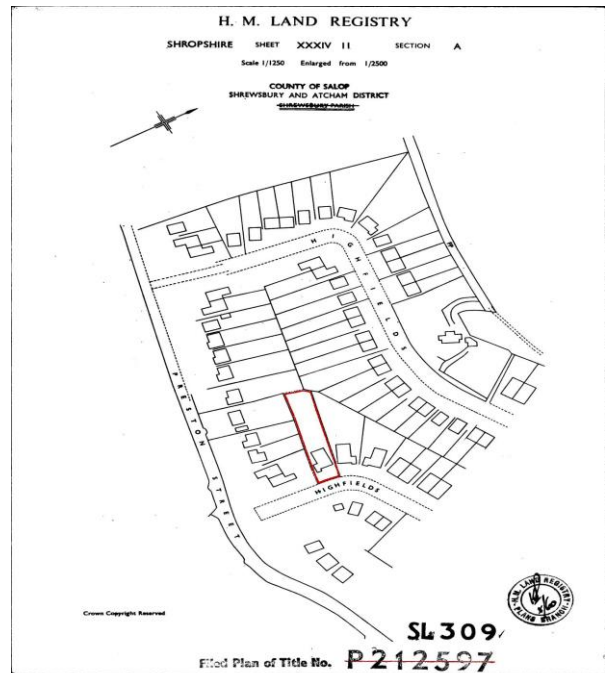
Detached, 3-bedroom bungalows are rarely brought to the market in the very popular Highfields area. This is a fine, authentic example and enjoys a particularly large plot. The accommodation begins with a central Hall, to the left of which is a Living Room with engineered oak flooring and a wood-burning stove with French doors leading into the garden. To the right of the Hall is a spacious Kitchen with a generous Breakfast Area. An Inner Hall leads from the Living Room, which provides access to 2 large double Bedrooms and a generous single Bedroom, along with the Bathroom. The property enjoys a wide gravel Driveway with ample parking and Garage. The property also offers gas central heating and double glazing.



This floorplan is only for illustrative purposes and is not to scale. Measurements of rooms, doors, windows, and any items are approximate and no responsibility is taken for any error, omission or mis-statement. Icons of items such as bathroom suites are representations only and may not look like the real items. Made with Made Snappy 360.

FLOOR PLANS FOR GUIDANCE ONLY





This is a copy of the title plan on 1 MAY 2020 at 12:49:15. This copy does not take account of any application made after that time even if still pending in HM Land Registry when this copy was issued.
This copy is not an 'Official Copy' of the title plan. An official copy of the title plan is admissible in evidence in a court to the same extent as the original. A person is entitled to be indemnified by the registrar if he or she suffers loss by reason of a mistake in an official copy. If you want to obtain an official copy, the HM Land Registry web site explains how to do this.
HM Land Registry endeavours to maintain high quality and scale accuracy of title plan images. The quality and accuracy of any print will depend on your printer. Your computer and its print settings. This title plan shows the general position, not the exact line, of the boundaries. It may be subject to distortion in scale. Measurements scaled from this plan may not match measurements between the same points on the ground.
This title is dealt with by HM Land Registry, Telford Office.
© Crown Copyright. Produced by HM Land Registry. Further reproduction in whole or in part is prohibited without the prior written permission of Ordnance Survey. Licence Number AC000051063.

Council Tax Band C

Tenure: Our client advises us that the property is Freehold. Should you proceed with the purchase of the property, these details must be verified by your solicitor.

NB: The mention of any appliances and/or services within these sales particulars does not imply that they are in full and efficient working order.

Viewing: To arrange a viewing call in at our office or telephone **01743 248351**

FREE MORTGAGE ADVICE

Whether you are a first-time buyer, moving home, buying as an investor or looking to save on your mortgage payments, you could benefit from some **free** no obligation mortgage advice.

Contact **Stephen Bath** of Bee Mortgages, who is based at our office

01743 248351

Whole of Market clear and relevant tailored to your individual needs and circumstances.

Your home may be repossessed if you do not keep up repayments on your mortgage