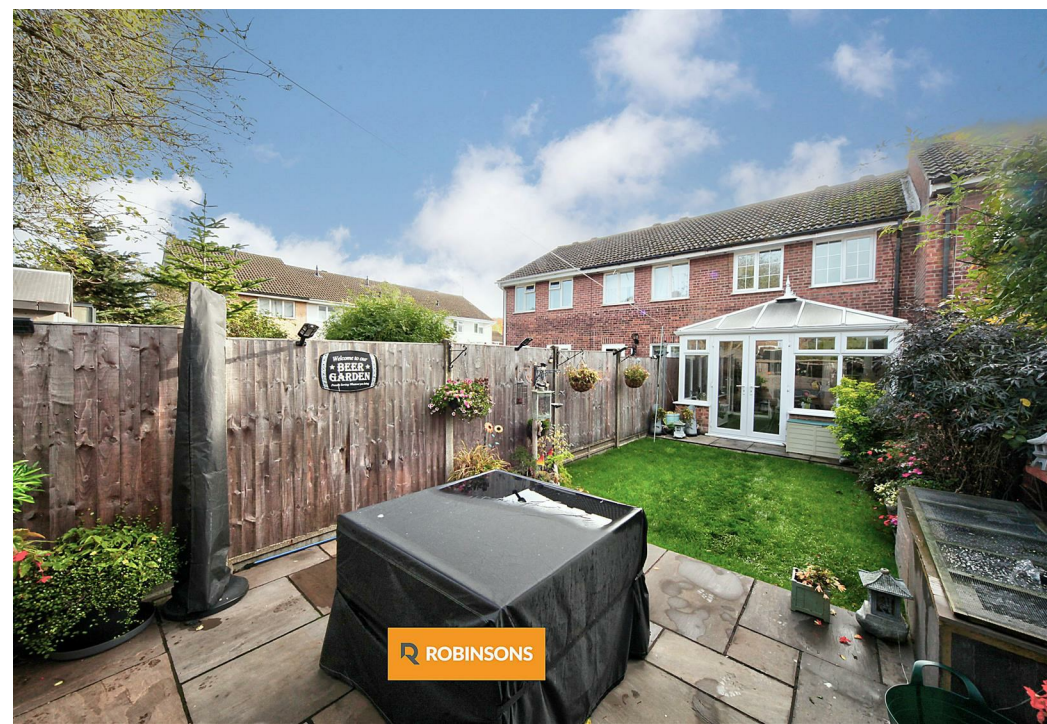
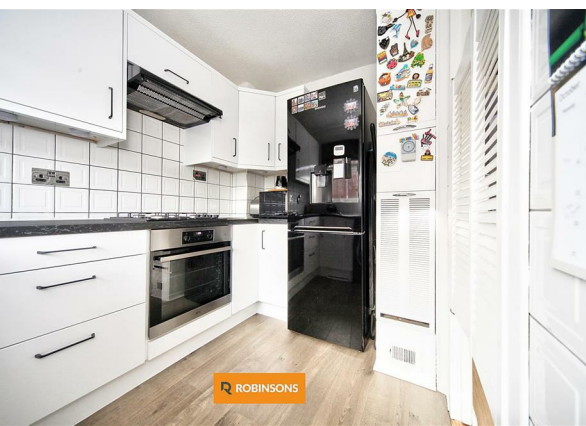
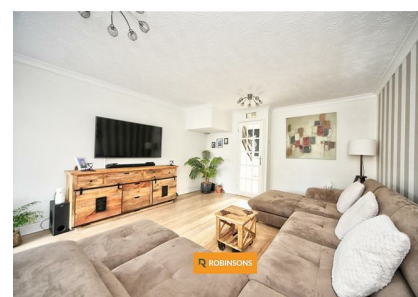
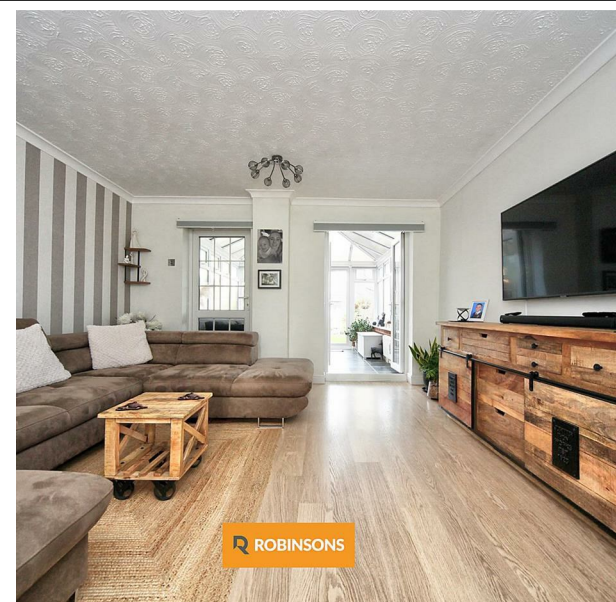
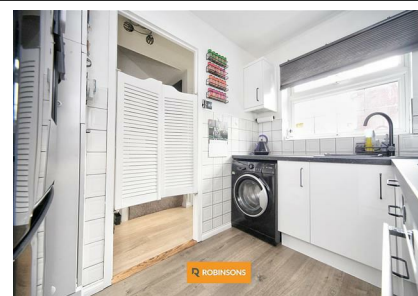


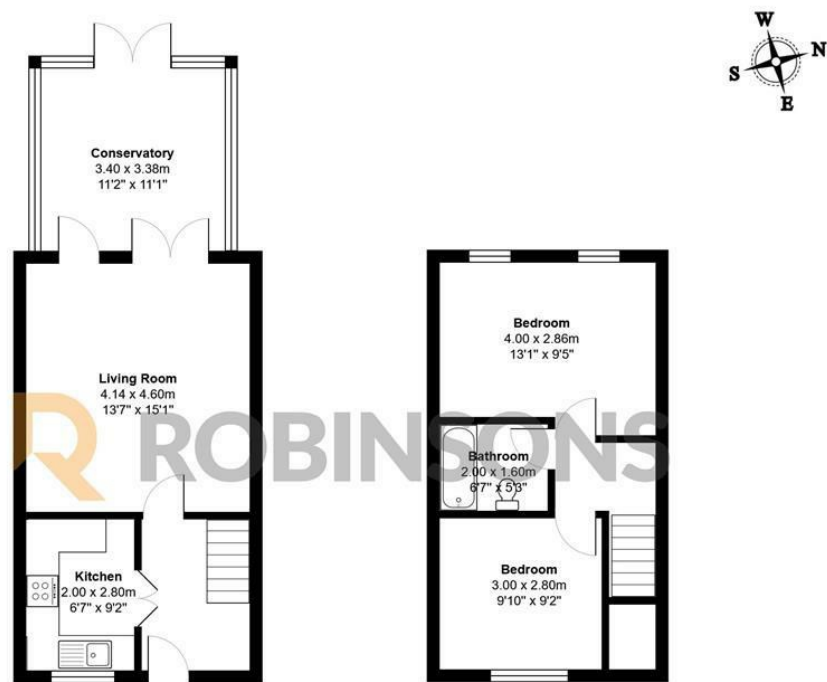
131 Cemetery Road, Houghton Regis, Dunstable, LU5 5DF
£290,000

ROBINSONS



AN IMMACULATE TWO DOUBLE BEDROOM TERRACE HOUSE WITH CONSERVATORY & GARAGE IN CUL DE SAC LOCATION OF HOUGHTON REGIS.

A well presented two bedroom terrace house in quiet location of Houghton Regis with two double bedrooms, conservatory & garage. ACCOMDATION FEATURES: Entrance hallway, kitchen, living room, conservatory, landing, two bedrooms, bathroom, front and rear garden, garage & residents parking.



Total Area: 73.7 m² ... 793 ft²

Floorplan produced by Woodside Photography
 Floorplan is for illustration purposes only and all measurements are approximate



20 West Street
 Dunstable
 Bedfordshire
 LU6 1SX
 01582 661112
sales@robinsons-estates.co.uk
<https://www.robinsons-estates.co.uk>



Energy Efficiency Rating		
	Current	Potential
Very energy efficient - lower running costs		
(92 plus) A		
(81-91) B		
(69-80) C		
(55-68) D		
(39-54) E		
(21-38) F		
(1-20) G		
Not energy efficient - higher running costs		
England & Wales	EU Directive 2002/91/EC 